

# Terranova

*Porcelain Minimal*



Floor: DMSN 08 Natural

**8 Colours / 3 Finishes / 5 Sizes / 1 Mosaic**

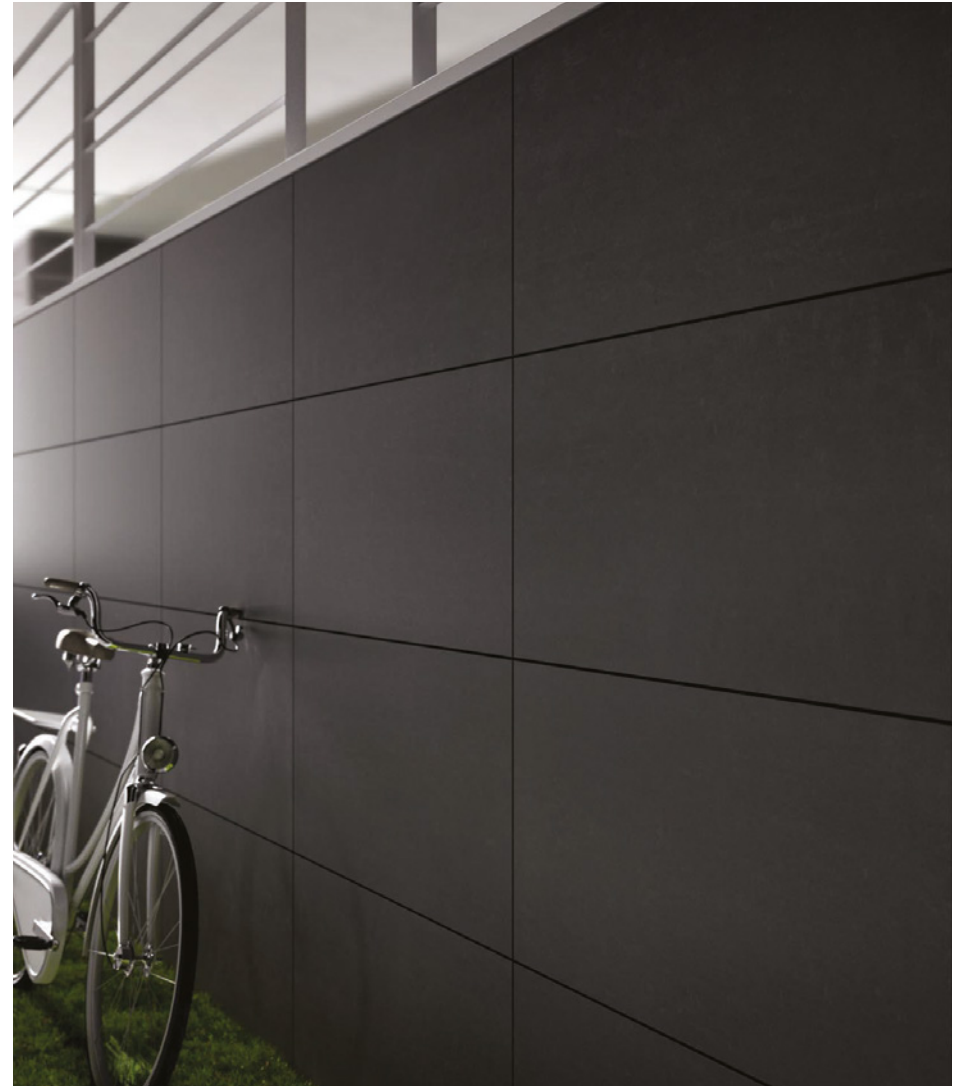
Terranova is a sophisticated porcelain range with organic, pastel-grey shades. Timeless style with modular sizes including large-format options and mosaics. Made using advanced technology with recycled content between 20-45%, dependent on colour.



Floor: DMSN 03 Natural



Floor: DMSN 01 Natural



Wall: DMSN 09 Natural

# Sizes



DMSN 01



DMSN 02



DMSN 04



DMSN 03



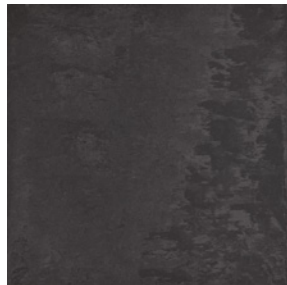
DMSN 05



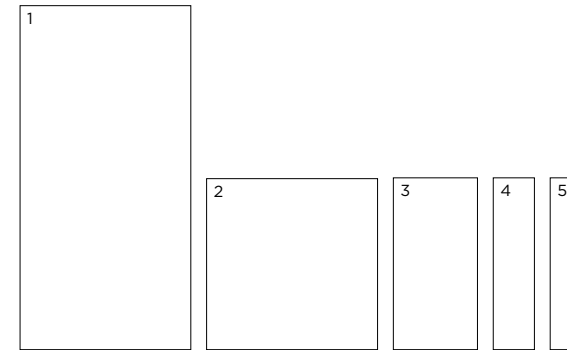
DMSN 08



DMSN 10



DMSN 09



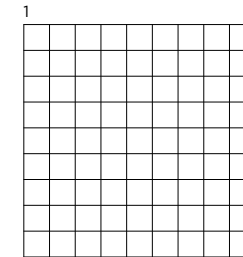
	Size (mm)	Thickness	Finish	Colour Availability
1	1198 x 598 (R)	10.5	Natural	DMSN 02, 03, 04, 05, 08, 09 & 10
2	598 x 598 (R)	10.5	Natural	All colours
		10.5	Bush Hammered	DMSN 02, 03, 04, 08, 09 & 10
		10	Polished	DMSN 01, 02, 04, 05 & 09
		10.5	Polished	DMSN 03, 08 & 10
3	598 x 298 (R)	10.5	Natural	All colours
		10.5	Bush Hammered	DMSN 02, 03, 04, 08, 09 & 10
4	598 x 148 (R)	10.5	Natural	All colours
		10.5	Bush Hammered	DMSN 02, 03, 04, 08, 09 & 10
5	595 x 97 (R)	10.5	Natural	All colours
		10.5	Bush Hammered	DMSN 02, 03, 04, 08, 09 & 10

(R) Rectified size - square edge with bevel. Mosaics and special pieces shown on next page.  
Swatch colours may vary from original. Samples should be requested.



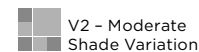
Wall (Top): DMSN 04 Mosaic Natural  
 Wall (Bottom): DMSN 04 Natural

## Mosaics & Special Pieces



	Size (mm)	Thickness	Finish	Colour Availability
1	Mosaic 30 x 30 on 298 x 298 sheet	11	Natural	All colours
	Skirting 598 x 70 (R)	10.5	Natural	All colours
	Step Tread 1198 x 298 (R)	10.5	Natural	DMSN 02, 03, 04, 05, 08 & 10
	Step Tread 598 x 298 (R)	10.5	Natural	All colours

(R) Rectified size – square edge with bevel. Swatch colours may vary from original. Samples should be requested.



**DOMUS**

service@domusgroup.com | t: 020 8481 9500 | domusgroup.com

# Terranova

## Technical Data

**Product Type:** Unglazed Porcelain (BS EN 14411 – Group Bla)

**Use:** Floors & Walls

**Product Code:** DMSN

### DIMENSION & SURFACE QUALITY

Technical Characteristics	Industry Standards	Requirement (for nominal size <i>N</i> )		Actual Value
		70mm ≤N<150mm	N ≥ 150mm	
Length & width	BS EN ISO 10545-2	± 0.9mm	± 0.60% (max. ± 2.0mm)	Conforms
Thickness	BS EN ISO 10545-2	± 0.5mm	± 5% (max. ± 0.5mm)	Conforms
Edge straightness	BS EN ISO 10545-2	± 0.75mm	± 0.50% (max. ± 1.5mm)	Conforms
Orthogonality (squareness)	BS EN ISO 10545-2	± 0.75mm	± 0.50% (max. ± 2.0mm)	Conforms
Planarity (flatness)	BS EN ISO 10545-2	± 0.75mm	± 0.50% (max. ± 2.0mm)	Conforms
Appearance	BS EN ISO 10545-2	> 95%		Conforms

### SLIP RESISTANCE

Technical Characteristics	Industry Standards	Requirement	Finish
Areas with footwear	BS EN ISO 10545-17 (DIN 51130)	R10 from 10° to 19° R11 from 19° to 27°	Natural Bush Hammered
Areas with bare feet	DIN 51097	B over 18° to 24° C over 24°	Natural Bush Hammered
Slip resistance Coefficient of friction	BS 7976-2	Test results upon request	

### PRODUCT QUALITY & DURABILITY

Technical Characteristics	Industry Standards	Requirement	Actual Value
Water absorption	BS EN ISO 10545-3	≤ 0.5%	≤ 0.05% (typical value)
Modulus of rupture (bending strength)	BS EN ISO 10545-4	≥ 35 N/mm <sup>2</sup>	≥ 45 N/mm <sup>2</sup> (typical value)
Breaking strength	BS EN ISO 10545-4	≥ 1300 N	Conforms
Resistance to deep abrasion	BS EN ISO 10545-6	≤ 175 mm <sup>3</sup>	120-150 mm <sup>3</sup> (typical value)
Linear thermal expansion coefficient	BS EN ISO 10545-8	Declared value	≤ 9 x 10 <sup>-6</sup> / °C (typical value)
Thermal shock resistance	BS EN ISO 10545-9	No visible defects	Resistant
Frost resistance	BS EN ISO 10545-12	No surface alteration	Resistant
Chemical resistance: Low concentrations of acids & alkalis	BS EN ISO 10545-13	No visible defects	ULA-ULB
High concentrations of acids & alkalis	BS EN ISO 10545-13	No visible defects	UHA-UHB
Domestic chemicals & additives for swimming pools	BS EN ISO 10545-13	UB min.	UA
Stain resistance	BS EN ISO 10545-14	Declared value	Class 3-5
Colour resistance to light exposure	DIN 51094	No noticeable colour variation	Resistant
Reaction to fire	Based on the decision 96/603/EC and its changes	A1 <sub>FL</sub> /A1	A1 <sub>FL</sub> /A1
Recycled content			DMSN 01 - 20% DMSN 03-12 - 40%



All test results are based upon current test data provided by the manufacturer and are provided in good faith. Domus Group cannot be held responsible for any variation in the test data due to changes in manufacture or material characteristics. Errors & omissions excepted. Please refer to Domus Group Terms & Conditions of Sale. Jan 2021

**DOMUS**

service@domusgroup.com | t: 020 8481 9500 | domusgroup.com