

Build 2.0 Cement Magnum

Lightweight Slabs / Porcelain Concrete



Floor: DMAG 113 Natural

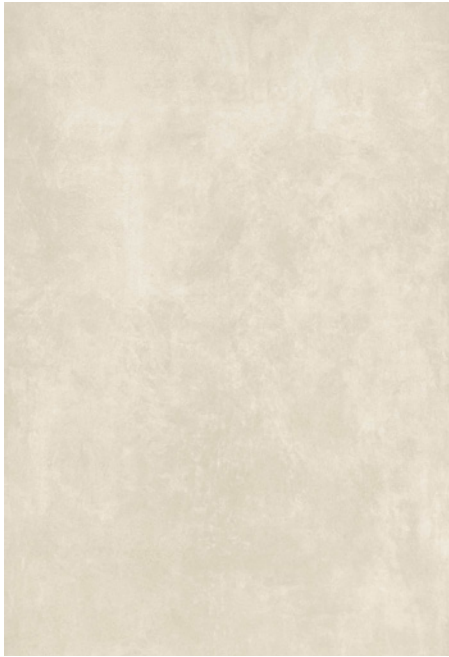
4 Colours / 1 Finish / 3 Sizes / 2 Mosaics

Build 2.0 Cement Magnum is a high-tech porcelain range that offers a smart surface solution in a neutral colour palette. Pair with Build 2.0 Bold Magnum to promote the powerful coupling of the neutrality of cement with the boldness of saturated colours destined for architecture.



Floor: DMAG 116 Natural





DMAG 113



DMAG 114

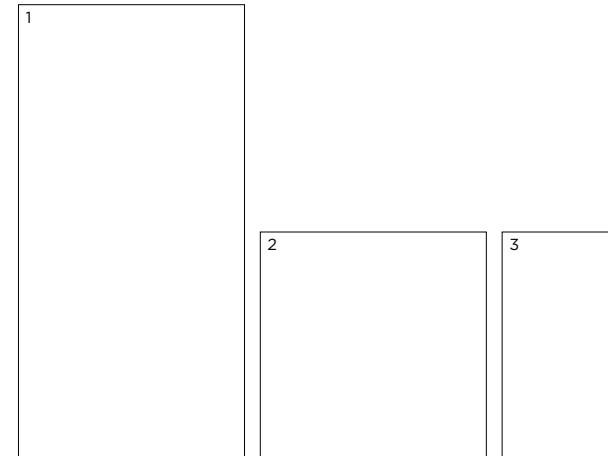


DMAG 115



DMAG 116

Sizes



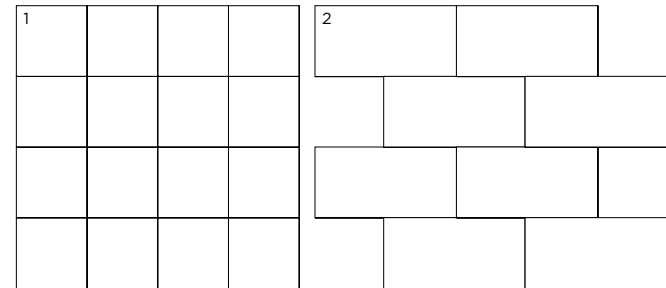
	Size (mm)	Thickness	Finish	Colour Availability
1	2397 x 1197 (R)	6	Natural	All colours
2	1197 x 1197 (R)	6	Natural	All colours
3	1197 x 597 (R)	6	Natural	All colours
	Plinth Skirting 597 x 46 (R)	6	Natural	All colours

(R) Rectified size - square edge with bevel. Swatch colours may vary from original. Samples should be requested. Mosaics shown on next page.



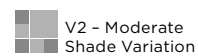
Floor: DMAG 114 Natural

Mosaics



	Size (mm)	Thickness	Finish	Colour Availability
1	Mosaic 72 x 72 on 297 x 297 sheet	6	Natural	All colours
2	Muretto Mosaic 147 x 72 on 297 x 297 sheet	6	Natural	All colours

Swatch colours may vary from original. Samples should be requested.



Build 2.0 Cement Magnum

Technical Data

Product Type: Unglazed Porcelain (BS EN 14411 – Group Bla)

Use: Floors & Walls

Product Code: DMAG

DIMENSION & SURFACE QUALITY

Technical Characteristics	Industry Standards	Requirement	Actual Value
Length & width	BS EN ISO 10545-2	± 0.60% (max. ± 2.0mm)	± 0.15%
Thickness	BS EN ISO 10545-2	± 5% (max. ± 0.5mm)	± 5%
Edge straightness	BS EN ISO 10545-2	± 0.50% (max. ± 1.5mm)	± 0.1%
Orthogonality (squareness)	BS EN ISO 10545-2	± 0.50% (max. ± 2.0mm)	± 0.2%
Planarity (flatness)	BS EN ISO 10545-2	± 0.50% (max. ± 2.0mm)	± 0.2 %
Appearance	BS EN ISO 10545-2	> 95%	Conforms

SLIP RESISTANCE

Technical Characteristics	Industry Standards	Requirement	Finish
Areas with footwear	BS EN ISO 10545-17 (DIN 51130)	R9 from 3° to 10°	Natural
Areas with bare feet	DIN 51097	A over 12° to 18°	Natural
Slip resistance Coefficient of friction	BS 7976-2 BS EN 16165	Test results upon request	

PRODUCT QUALITY & DURABILITY

Technical Characteristics	Industry Standards	Requirement	Actual Value
Water absorption	BS EN ISO 10545-3	≤ 0.5%	0.08% (average value)
Modulus of rupture (bending strength)	BS EN ISO 10545-4	≥ 35 N/mm ²	52 N/mm ² (average value)
Breaking strength	BS EN ISO 10545-4	< 7.5mm ≥ 700 N	1350 N (average value)
Resistance to deep abrasion (unglazed tiles)	BS EN ISO 10545-6	≤ 175 mm ³	140 mm ³ (average value)
Thermal shock resistance	BS EN ISO 10545-9	No visible defects	Resistant
Frost resistance	BS EN ISO 10545-12	No surface alteration	Resistant
Chemical resistance: Low concentrations of acids & alkalis	BS EN ISO 10545-13	No visible defects	ULA - Natural ULA-ULB - Natural Grip
Domestic chemicals & additives for swimming pools	BS EN ISO 10545-13	UB min.	UA
Stain resistance	BS EN ISO 10545-14	Declared value	Class 4-5
Reaction to fire	Based on the decision 96/603/EC and its changes	A1 _{FL} /A1	A1 _{FL} /A1
Recycled content			DMAG 113 & 114 – 0% DMAG 115 & 116 – 20.5%



All test results are based upon current test data provided by the manufacturer and are provided in good faith. Domus Group cannot be held responsible for any variation in the test data due to changes in manufacture or material characteristics. Errors & omissions excepted. Please refer to Domus Group Terms & Conditions of Sale. June 2023