

Elementa

Porcelain Stone



3 Colours / **1** Finish / **3** Sizes

Elementa is an elegant and enveloping porcelain tile range that conveys naturalness, welcoming warmth and a sense of relaxation. Its natural allure, enhanced by the delicate chromatic vibrations of its neutral tones, balances perfectly with warm materials such as wood and the green accents of vegetation.





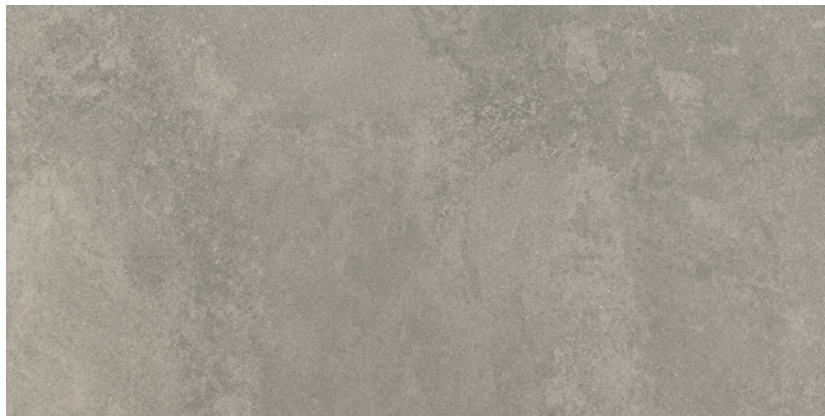
Wall & Floor: DGET 03 Matt



Wall & Floor: DGET 01 Matt



DGET 01

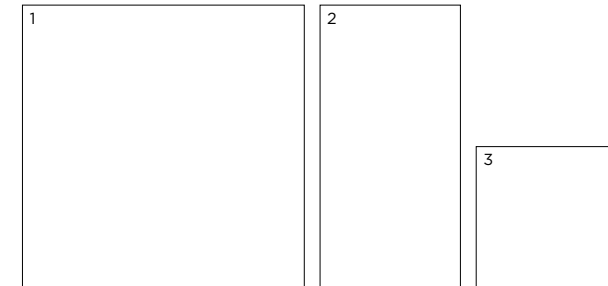


DGET 02



DGET 03

Sizes



	Size (mm)	Thickness	Finish	Colour Availability
1	1190 x 1190 (R)	12	Matt	All colours
2	1190 x 594 (R)	12	Matt	All colours
3	594 x 594 (R)	12	Matt	All colours
	Skirting 594 x 71 (R)	12	Matt	All colours
	Gradino Costa Retta 1190 x 330 x 40 (R)	30	Matt	All colours
	Gradino Costa Retta 594 x 330 x 40 (R)	30	Matt	All colours

(R) Rectified size - squared edge with bevel. Swatch colours may vary from original. Samples should be requested.

V3 - High Shade Variation



DGET 01 Matt

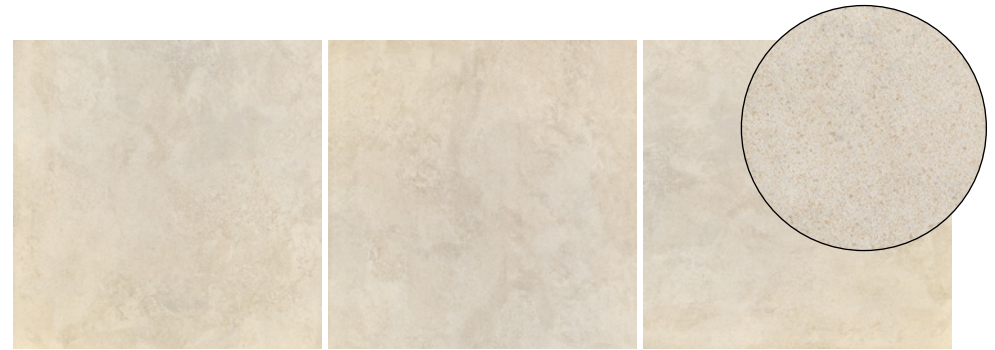


DGET 02 Matt

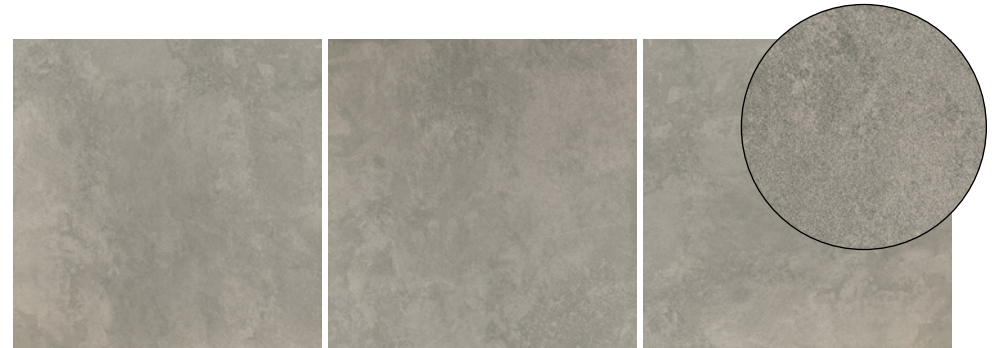


DGET 03 Matt

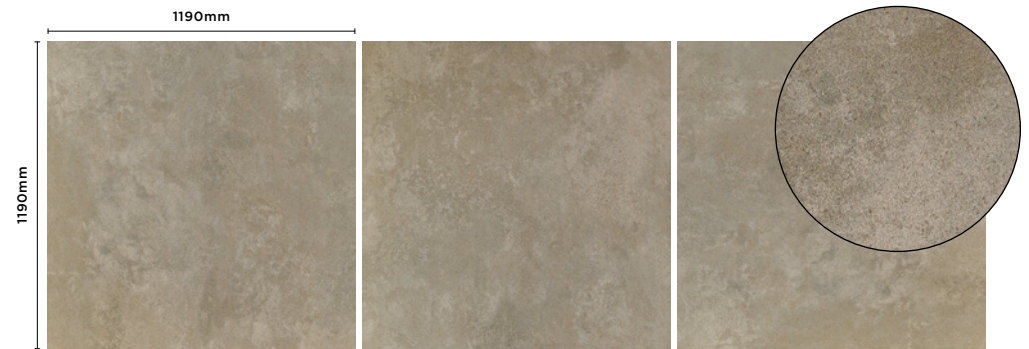
V3 - High Shade Variation



DGET 01 Matt



DGET 02 Matt



DGET 03 Matt

Elementa

Technical Data

Product Type: Unglazed Porcelain (BS EN 14411 – Group BIa)

Use: Floors & Walls

Product Code: DGET

DIMENSION & SURFACE QUALITY

Technical Characteristics	Industry Standards	Requirement	Actual Value
Length & width	BS EN ISO 10545-2	± 0.60% (max. ± 2.0mm)	Conforms
Thickness	BS EN ISO 10545-2	± 5% (max. ± 0.5mm)	Conforms
Edge straightness	BS EN ISO 10545-2	± 0.50% (max. ± 1.5mm)	Conforms
Orthogonality (squareness)	BS EN ISO 10545-2	± 0.50% (max. ± 2.0mm)	Conforms
Planarity (flatness)	BS EN ISO 10545-2	± 0.50% (max. ± 2.0mm)	Conforms
Appearance	BS EN ISO 10545-2	> 95%	Conforms

SLIP RESISTANCE

Technical Characteristics	Industry Standards	Requirement	Finish
Areas with footwear	BS EN ISO 10545-17 (DIN 51130)	R10 from 10° to 19°	Matt
Areas with bare feet	DIN 51097	B over 18° to 24°	Matt
Slip resistance (Pendulum) Coefficient of friction	BS EN 16165	Test results upon request	

PRODUCT QUALITY & DURABILITY

Technical Characteristics	Industry Standards	Requirement	Actual Value
Water absorption	BS EN ISO 10545-3	≤ 0.5%	≤ 0.1% (Typical value)
Modulus of rupture (bending strength)	BS EN ISO 10545-4	≥ 35 N/mm ²	≥ 40 N/mm ² (Typical value)
Breaking strength	BS EN ISO 10545-4	≥ 7.5mm ≥ 1300 N	≥ 4000 N (Typical value)
Resistance to deep abrasion (unglazed tiles)	BS EN ISO 10545-6	≤ 175 mm ³	≤ 145 mm ³ (Typical value)
Linear thermal expansion coefficient	BS EN ISO 10545-8	Declared value	≤ 7x10 ⁻⁶ /°C (Typical value)
Thermal shock resistance	BS EN ISO 10545-9	No visible defects	Resistant
Frost resistance	BS EN ISO 10545-12	No surface alteration	Resistant
Chemical resistance: Domestic chemicals & additives for swimming pools	BS EN ISO 10545-13	UB/GB min.	Resistant
Stain resistance	BS EN ISO 10545-14	Declared value - unglazed	Resistant
Reaction to fire	Based on the decision 96/603/EC and its changes	A1 _{FL} /A1	A1 _{FL} /A1
Recycled content			41%



All test results are based upon current test data provided by the manufacturer and are provided in good faith. Domus Group cannot be held responsible for any variation in the test data due to changes in manufacture or material characteristics. Errors & omissions excepted. Please refer to Domus Group Terms & Conditions of Sale. November 2023

DOMUS

service@domusgroup.com | t: 020 8481 9500 | domusgroup.com