

Kendo Slim

Lightweight Slabs / Porcelain Stone



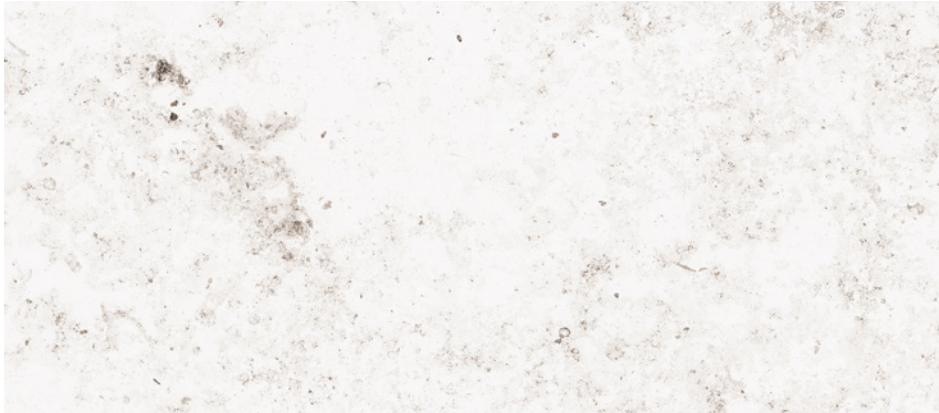
Floor: DLKFS 01 Soft Textured

3 Colours / **3** Finishes / **1** Size

Kendo Slim is inspired by the protected stone of the Deutch Jura Mountains, a stone from marine deposits with numerous markings on its surface. This lightweight porcelain slab range depicts dark-coloured organic-shaped markings with an extraordinary richness of intensities.



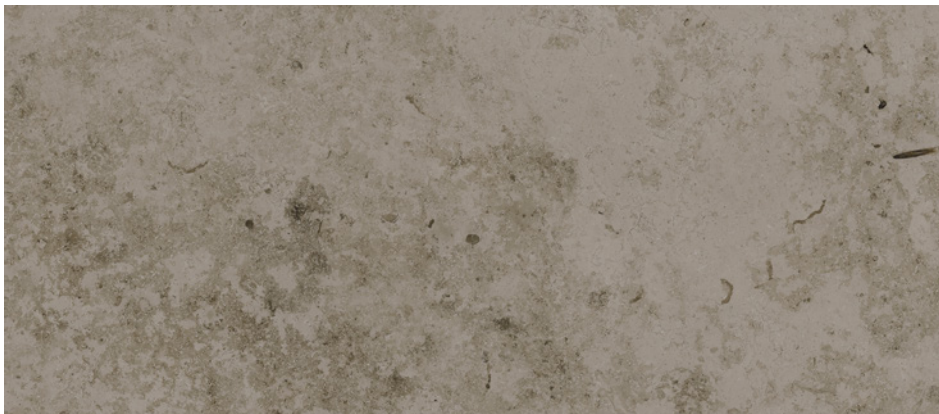
Wall & Counter: DLKFS 02 Soft Textured



DLKFS 04



DLKFS 01



DLKFS 02

Sizes



	Size (mm)	Thickness	Finish	Colour Availability
1	2698 x 1198 (R)	6	Soft Textured Honed Bush Hammered	All colours All colours All colours

(R) Rectified size - squared edge with bevel.
Swatch colours may vary from original. Samples should be requested.



Kendo Slim

Technical Data

Product Type: Glazed Porcelain (BS EN 14411 – Group Bla)

Use: Floors & Walls

Product Code: DLKFS

DIMENSION & SURFACE QUALITY

Technical Characteristics	Industry Standards	Requirement (for nominal size N)		Actual Value
		70mm ≤N<150mm	N ≥ 150mm	
Length & width	BS EN ISO 10545-2	± 0.9mm	± 0.60% (max. ± 2.0mm)	Conforms
Thickness	BS EN ISO 10545-2	± 0.5mm	± 5% (max. ± 0.5mm)	Conforms
Edge straightness	BS EN ISO 10545-2	± 0.75mm	± 0.50% (max. ± 1.5mm)	Conforms
Orthogonality (squareness)	BS EN ISO 10545-2	± 0.75mm	± 0.50% (max. ± 2.0mm)	Conforms
Planarity (flatness)	BS EN ISO 10545-2	± 0.75mm	± 0.50% (max. ± 2.0mm)	Conforms
Appearance	BS EN ISO 10545-2	> 95%		Conforms

SLIP RESISTANCE

Technical Characteristics	Industry Standards	Requirement	Finish
Areas with footwear	BS EN ISO 10545-17 (DIN 51130)	R9 from 3° to 10° R10 from 10° to 19° R11 from 19° to 27° R12 from 27° to 35° R13 over 35°	Natural
Areas with bare feet	DIN 51097	A over 12° to 18° B over 18° to 24° C over 24°	Natural
Slip resistance Coefficient of friction	BS 7976-2	Test results upon request	

All test results are based upon current test data provided by the manufacturer and are provided in good faith. Domus Group cannot be held responsible for any variation in the test data due to changes in manufacture or material characteristics. Errors & omissions excepted. Please refer to Domus Group Terms & Conditions of Sale. Dec. 2020

PRODUCT QUALITY & DURABILITY

Technical Characteristics	Industry Standards	Requirement	Actual Value
Water absorption	BS EN ISO 10545-3	≤ 0.5%	< 0.5%
Modulus of rupture (bending strength)	BS EN ISO 10545-4	≥ 35 N/mm ²	> 50 N/mm ²
Breaking strength	BS EN ISO 10545-4	≥ 700 N	> 1,000 N
Resistance to surface abrasion (glazed tiles)	BS EN ISO 10545-7	PEI *see classifications below	3
Thermal shock resistance	BS EN ISO 10545-9	No visible defects	Conforms
Crazing resistance	BS EN ISO 10545-11	No visible signs	Conforms
Frost resistance	BS EN ISO 10545-12	No surface alteration	Conforms
Chemical resistance: Low concentrations of acids & alkalis	BS EN ISO 10545-13	No visible defects	GLA
High concentrations of acids & alkalis	BS EN ISO 10545-13	No visible defects	GHA
Domestic chemicals & additives for swimming pools	BS EN ISO 10545-13	UB/GB min.	GA
Stain resistance	BS EN ISO 10545-14	Min. Class 3 – glazed Declared value - unglazed	Class 5
Reaction to fire	Based on the decision 96/603/EC and its changes	A1 _{FL} /A1	A1 _{FL} /A1
Recycled content			30%

***PEI classifications**
 PEI 1 - Very light traffic
 PEI 2 - Light traffic
 PEI 3 - Light to moderate traffic
 PEI 4 - Moderate to heavy traffic
 PEI 5 - Heavy to extra heavy traffic



DOMUS

service@domusgroup.com | t: 020 8481 9500 | domusgroup.com