

Noon Wall Slim

Lightweight Slabs / Ceramic Design



3 Colours / 1 Finish / 2 Sizes

Noon Wall Slim is a highly versatile lightweight ceramic slab range for walls that utilises the ground-breaking Ductile® technology. Due to the high adaptability of the large-sized sheets, it is perfect for interior cladding. Easy to handle thanks to its 6mm thickness. Refer to Noon for 9mm-thick porcelain alternatives.



Sizes



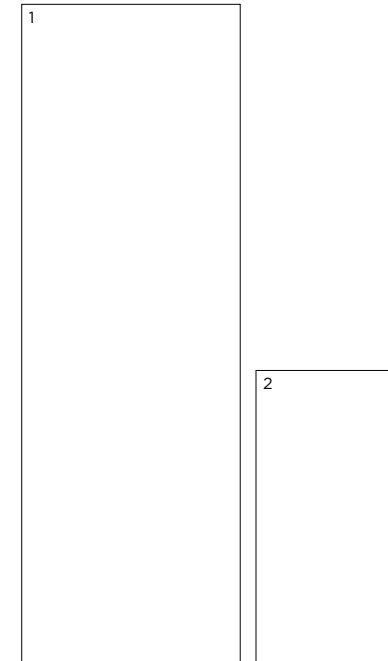
DLOWS 01



DLOWS 02



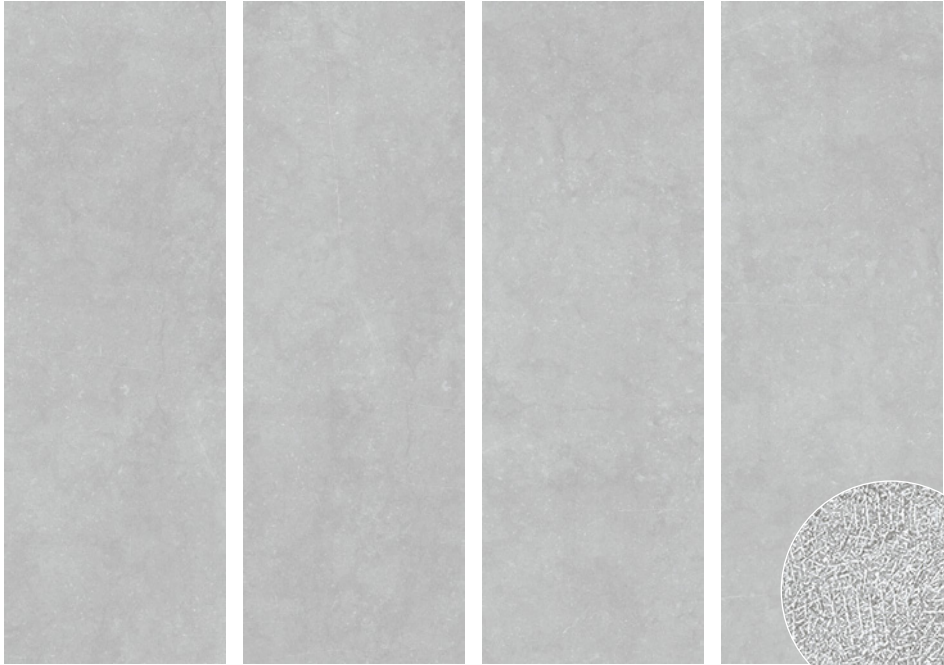
DLOWS 04



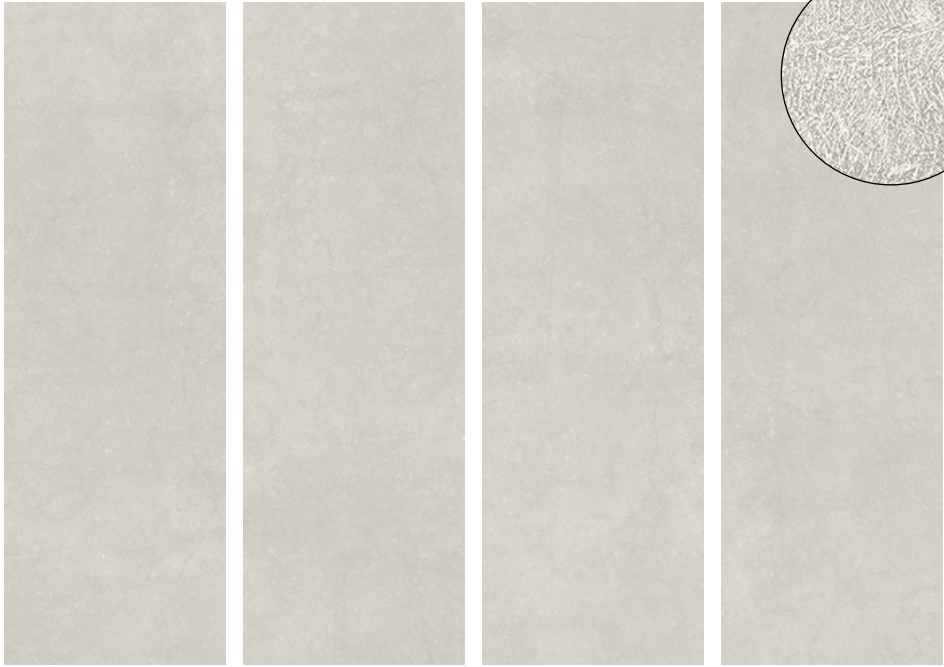
	Size (mm)	Thickness	Finish	Colour Availability
1	2698 x 898 (R)	6	Soft Textured	All colours
2	1198 x 598 (R)	6	Soft Textured	All colours

(R) Rectified size – squared edge with bevel. For use on internal walls only.
Swatch colours may vary from original. Samples should be requested.

V2 - Moderate Shade Variation

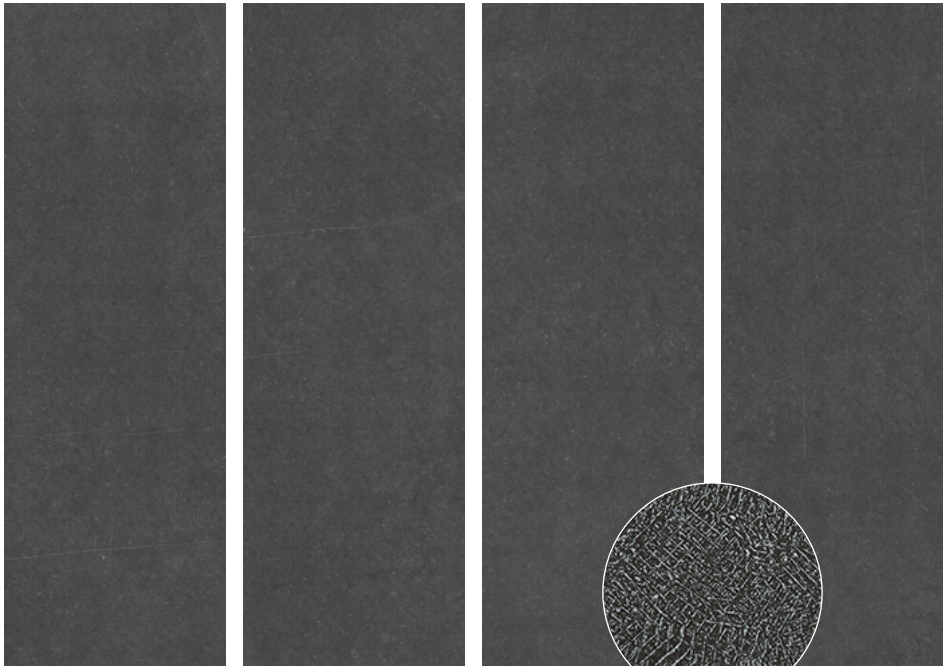


DLOWS 02



DLOWS 01

898mm



DLOWS 04

2696mm