

Heritage Luxe Magnum

Lightweight Slabs / Porcelain Marble



Wall: DMAG 239 Glossy

6 Colours / 2 Finishes / 4 Sizes / 3 Mosaics

Inspired by the noble hues and majestic veining of marble, Heritage Luxe Magnum rediscovers the artistic heritage of inestimable cultural value we are now privileged to inherit. This lightweight porcelain slab range exhibits similarities to ancient-European palaces, sculptures, and monuments created from coloured marble.



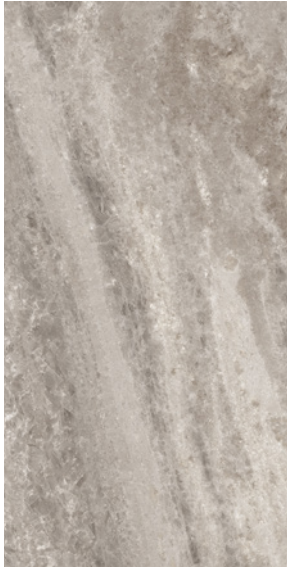
Wall: DMAG 238 Glossy



Wall: DMAG 234 & 236 Picket Mosaic Glossy



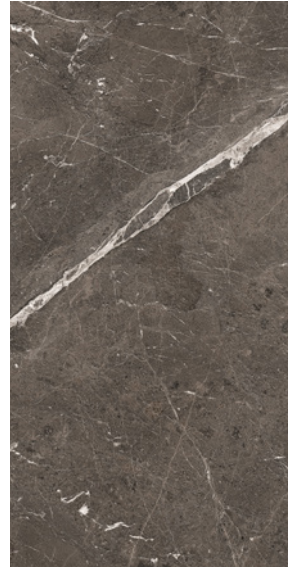
Wall: DMAG 237 Glossy
Floor: DMAG 235 Glossy



DMAG 234



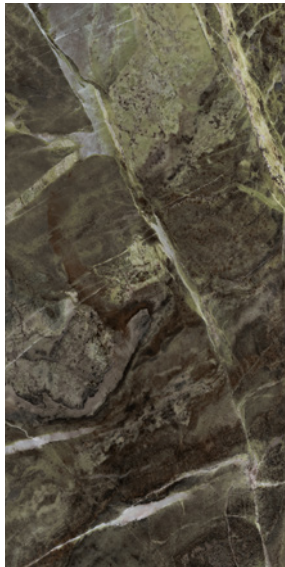
DMAG 237



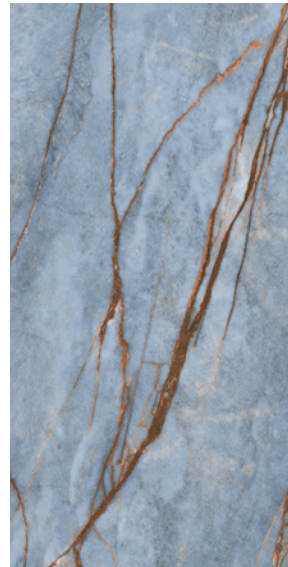
DMAG 235



DMAG 238

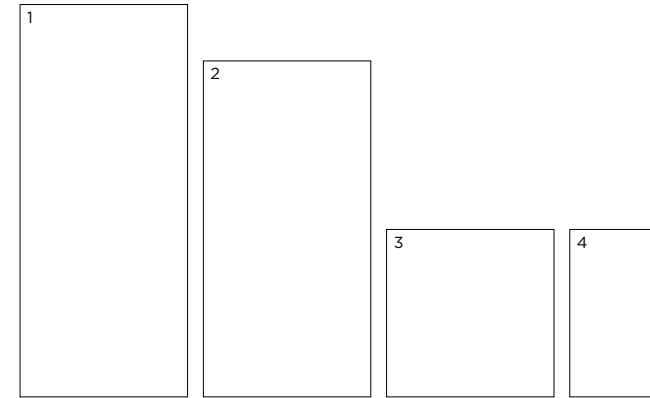


DMAG 236



DMAG 239

Sizes



	Size (mm)	Thickness	Finish	Colour Availability
1	2797 x 1197 (R)	6	Comfort PTV Glossy	All colours All colours
2	2397 x 1197 (R)	6	Comfort PTV Glossy	All colours All colours
3	1197 x 1197 (R)	6	Comfort PTV Glossy	All colours All colours
4	1197 x 597 (R)	6	Comfort PTV Glossy	All colours All colours

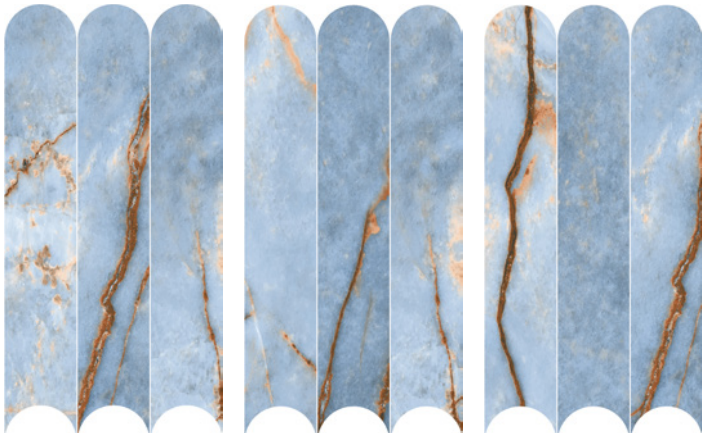
(R) Rectified size – square edge with bevel. Mosaics and special pieces shown on next page. Swatch colours may vary from original. Samples should be requested.

Maze Mosaic



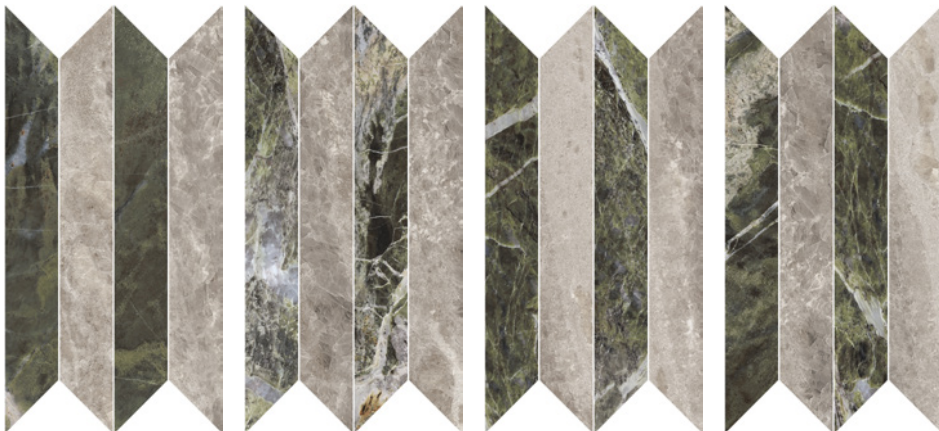
Mix of DMAG 235, 236 & 237

Trinity Mosaic



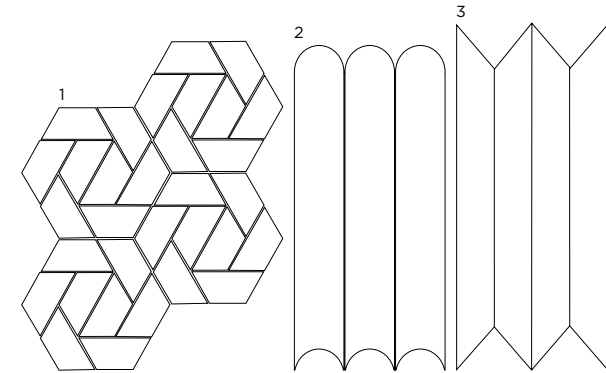
DMAG 239

Picket Mosaic



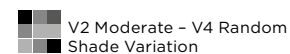
Mix of DMAG 234 & 236

Mosaics & Special Pieces



	Size (mm)	Thickness	Finish	Colour Availability
1	Maze Mosaic (R) on 487 x 387 sheet	6	Glossy	Mix of DMAG 235, 236 & 237
2	Trinity Mosaic (R) on 597 x 297 sheet	6	Glossy	DMAG 239
3	Picket Mosaic (R) on 597 x 297 sheet	6	Glossy	Mix of DMAG 234 & 236
	Plinth Skirting 597 x 46	6	Comfort PTV Glossy	All colours All colours

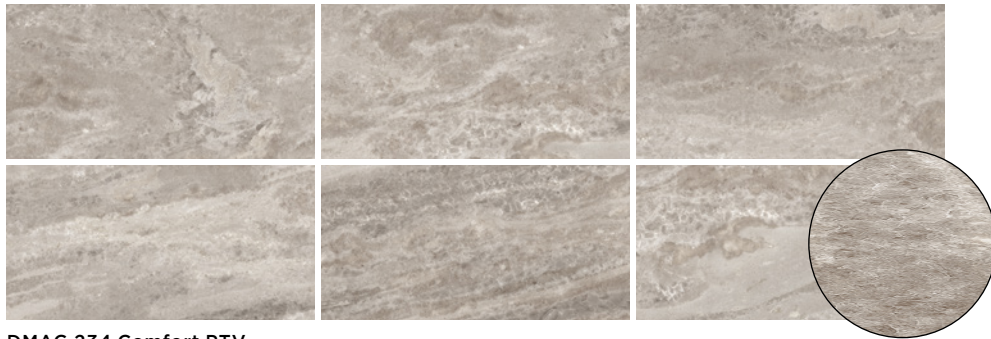
(R) Rectified size - square edge with bevel. Swatch colours may vary from original. Samples should be requested.



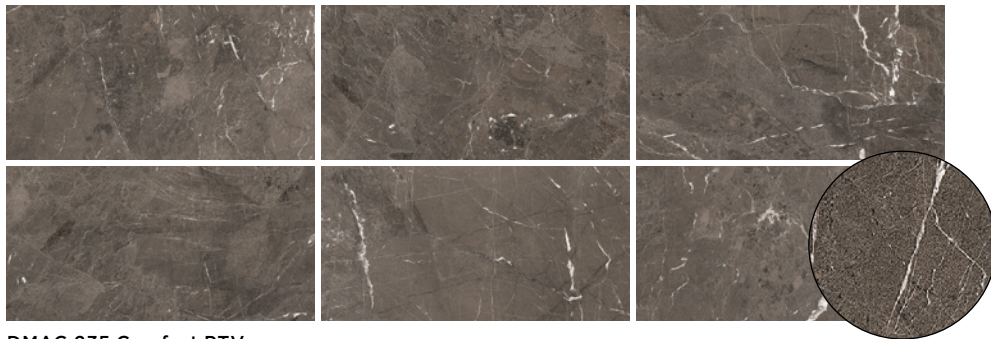
DOMUS

service@domusgroup.com | t: 020 8481 9500 | domusgroup.com

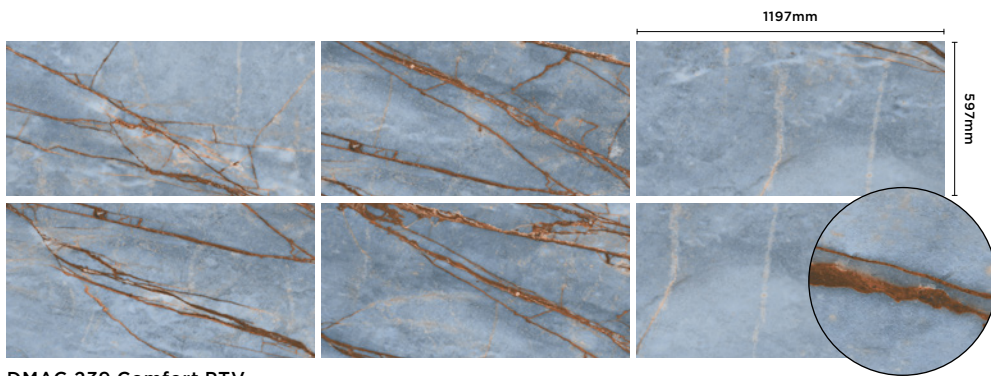
V2 Moderate - V3 High Shade Variation



DMAG 234 Comfort PTV

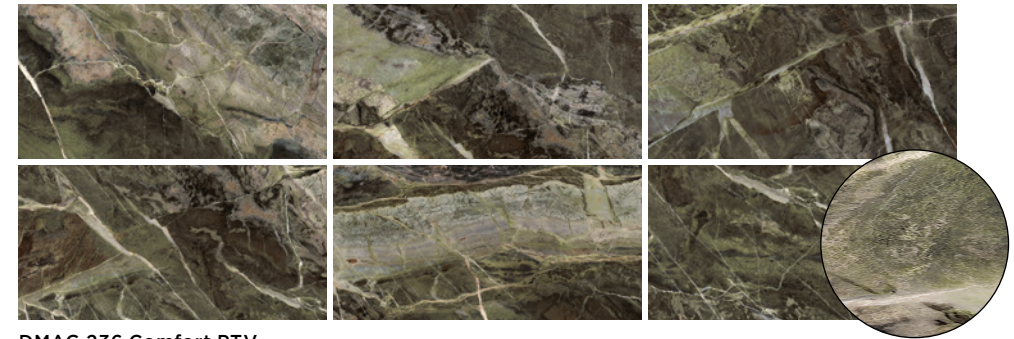


DMAG 235 Comfort PTV

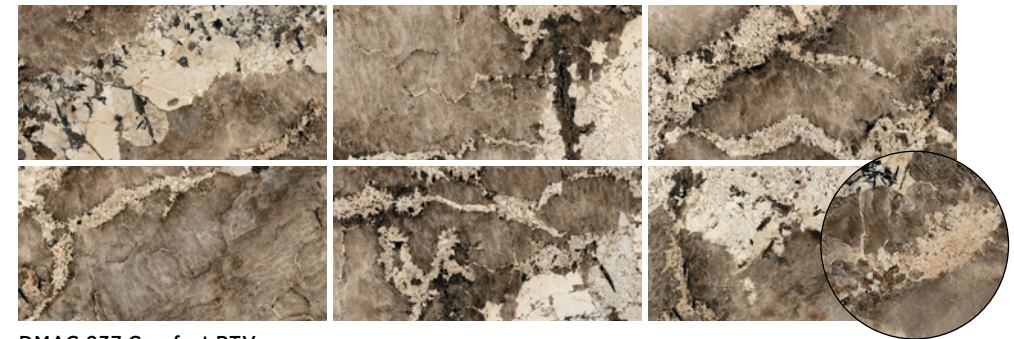


DMAG 239 Comfort PTV

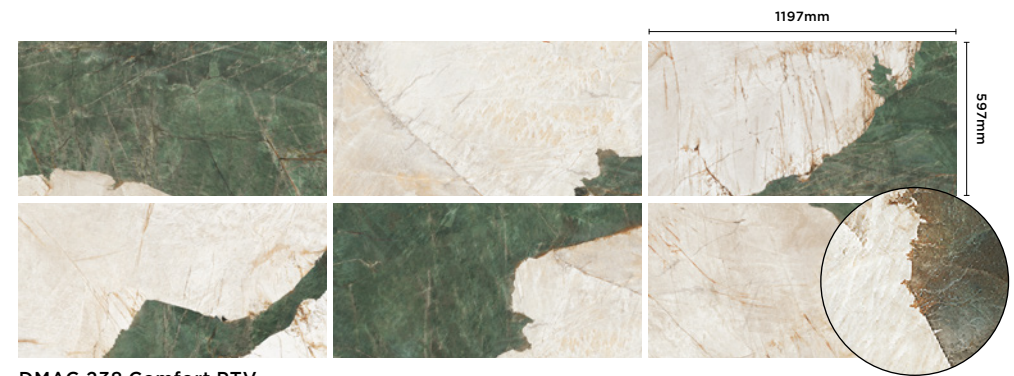
V4 - Random Shade Variation



DMAG 236 Comfort PTV



DMAG 237 Comfort PTV



DMAG 238 Comfort PTV

Heritage Luxe Magnum

Technical Data

Product Type: Unglazed Porcelain (BS EN 14411 – Group BIa)

Use: Floors & Walls

Product Code: DMAG 234 - 239

DIMENSION & SURFACE QUALITY

Technical Characteristics	Industry Standards	Requirement	Actual Value
Length & width	BS EN ISO 10545-2	± 0.60% (max. ± 2.0mm)	Conforms
Thickness	BS EN ISO 10545-2	± 5% (max. ± 0.5mm)	Conforms
Edge straightness	BS EN ISO 10545-2	± 0.50% (max. ± 1.5mm)	Conforms
Orthogonality (squareness)	BS EN ISO 10545-2	± 0.50% (max. ± 2.0mm)	Conforms
Planarity (flatness)	BS EN ISO 10545-2	± 0.50% (max. ± 2.0mm)	Conforms
Appearance	BS EN ISO 10545-2	> 95%	Conforms

SLIP RESISTANCE

Technical Characteristics	Industry Standards	Requirement	Finish
Areas with footwear	BS EN 16165 Annex B	R10 from 10° to 19°	Comfort PTV
Areas with bare feet	BS EN 16165 Annex A	B over 18° to 24°	Comfort PTV
Slip resistance Coefficient of friction	BS EN 16165	Test results upon request	

PRODUCT QUALITY & DURABILITY

Technical Characteristics	Industry Standards	Requirement	Actual Value
Water absorption	BS EN ISO 10545-3	≤ 0.5%	0.08% (typical average value)
Modulus of rupture (bending strength)	BS EN ISO 10545-4	≥ 35 N/mm ²	52 N/mm ² (typical average value)
Breaking strength	BS EN ISO 10545-4	< 7.5mm ≥ 700 N	1350 N (typical average value)
Resistance to deep abrasion (unglazed tiles)	BS EN ISO 10545-6	≤ 175 mm ³	140 mm ³ (typical average value)
Thermal shock resistance	BS EN ISO 10545-9	No visible defects	Resistant
Frost resistance	BS EN ISO 10545-12	No surface alteration	Resistant
Chemical resistance: Low concentrations of acids & alkalis	BS EN ISO 10545-13	No visible defects	ULA – Comfort PTV ULA-ULB – Glossy
Domestic chemicals & additives for swimming pools	BS EN ISO 10545-13	UB/GB min.	UA
Stain resistance	BS EN ISO 10545-14	Declared value - unglazed	Class 4-5 - Glossy Class 5 – Comfort PTV
Reaction to fire	Based on the decision 96/603/EC and its changes	A1 _{FL} /A1	A1 _{FL} /A1
Recycled content			20.5%



All test results are based upon current test data provided by the manufacturer and are provided in good faith. Domus Group cannot be held responsible for any variation in the test data due to changes in manufacture or material characteristics. Errors & omissions excepted. Please refer to Domus Group Terms & Conditions of Sale. November 2023