

Allure Wall

Ceramic Design



Wall: DLRW 03 Wave Natural

3 Colours / 3 Patterns / 1 Finish / 1 Size

In a minimal, grey palette, Allure Wall provides surface detailing with a calm aesthetic. Three distinct surface relief designs: Line, Wave and Wiggle, each with a striking textural pattern making it perfect for feature walls. Refer to Allure for 9mm-thick porcelain alternatives for wall and floor applications.



Wall: DLRW 02 Line Natural



Wall: DLRW 01 Line Natural



Wall: DLRW 03 Wiggle Natural

Sizes



DLRW 01 Line



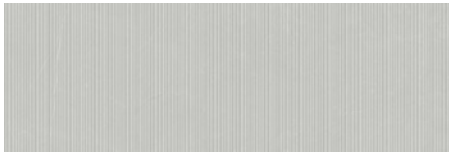
DLRW 01 Wave



DLRW 01 Wiggle



DLRW 02 Line



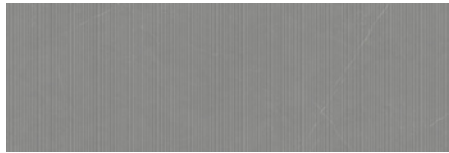
DLRW 02 Wave



DLRW 02 Wiggle



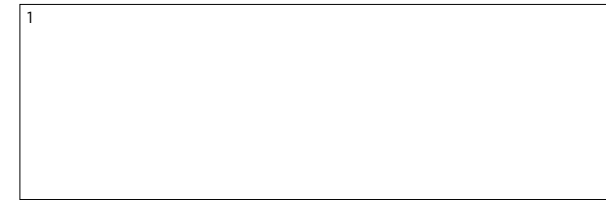
DLRW 03 Line



DLRW 03 Wave

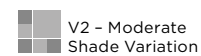


DLRW 03 Wiggle



| | Size (mm) | Thickness | Finish | Pattern | Colour Availability |
|---|---------------|-----------|---------|------------------------|---|
| 1 | 898 x 298 (R) | 9 | Natural | Line Wave Wiggle | All colours All colours All colours |

(R) Rectified size - squared edge with bevel. Suitable for use on internal walls only.
Swatch colours may vary from original. Samples should be requested.



Allure Wall

Technical Data

Product Type: Glazed Ceramic (BS EN 14411 – Group BIII)

Use: Walls (Internal only)

Product Code: DLRW

DIMENSION & SURFACE QUALITY

| Technical Characteristics | Industry Standards | Requirement | Actual Value |
|---|--------------------|--|--------------|
| Length & width | BS EN ISO 10545-2 | ± 0.50% (max. ± 2.0mm) | Conforms |
| Thickness | BS EN ISO 10545-2 | ± 10% (max. ± 0.5mm) | Conforms |
| Planarity (flatness): Centre curvature | BS EN ISO 10545-2 | + 0.5% (max. + 2.0mm) - 0.3% (max. - 1.5mm) | Conforms |
| Edge curvature | BS EN ISO 10545-2 | + 0.5% (max. + 2.0mm) - 0.3% (max. - 1.5mm) | Conforms |
| Warpage | BS EN ISO 10545-2 | ± 0.5% (max. ± 2.0mm) | Conforms |
| Appearance | BS EN ISO 10545-2 | > 95% | Conforms |

PRODUCT QUALITY & DURABILITY

| Technical Characteristics | Industry Standards | Requirement | Actual Value |
|---|---|------------------------|--|
| Water absorption | BS EN ISO 10545-3 | > 10% | > 10% (Typical value) |
| Modulus of rupture (bending strength) | BS EN ISO 10545-4 | ≥ 12 N/mm ² | > 15 N/mm ² (Typical value) |
| Breaking strength | BS EN ISO 10545-4 | ≥ 7.5mm ≥ 600 N | > 600 N (Typical value) |
| Crazing resistance | BS EN ISO 10545-11 | No visible defects | Resistant |
| Chemical resistance: Low concentrations of acids & alkalis | BS EN ISO 10545-13 | No visible defects | GLA |
| High concentrations of acids & alkalis | BS EN ISO 10545-13 | No visible defects | GHA |
| Domestic chemicals & additives for swimming pools | BS EN ISO 10545-13 | GB min. | GA |
| Stain resistance | BS EN ISO 10545-14 | Min. Class 3 | Class 5 |
| Reaction to fire | Based on the decision 96/603/EC and its changes | A1 | A1 |
| Recycled content | | | > 45% |



All test results are based upon current test data provided by the manufacturer and are provided in good faith. Domus Group cannot be held responsible for any variation in the test data due to changes in manufacture or material characteristics. Errors & omissions excepted. Please refer to Domus Group Terms & Conditions of Sale. August 2020

DOMUS

service@domusgroup.com | t: 020 8481 9500 | domusgroup.com