

Rock Salt

Porcelain Stone



5 Colours / 3 Finishes / 3 Sizes / 3 Mosaics

Rock Salt consists of fresh shades accompanied by warmer tones, returning the allure of the lustre and tactile materiality of natural crystals, depending on their finish. Refer to Rock Salt Magnum for 6mm thick lightweight porcelain slab options and Rock Salt 20mm for external use tile options.





Floor: DRCK 01 Shiny



DCRK 01



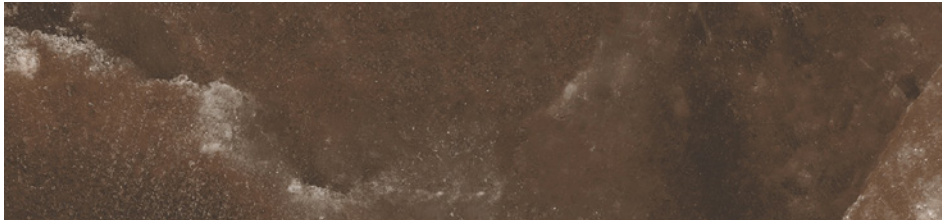
DCRK 02



DCRK 03

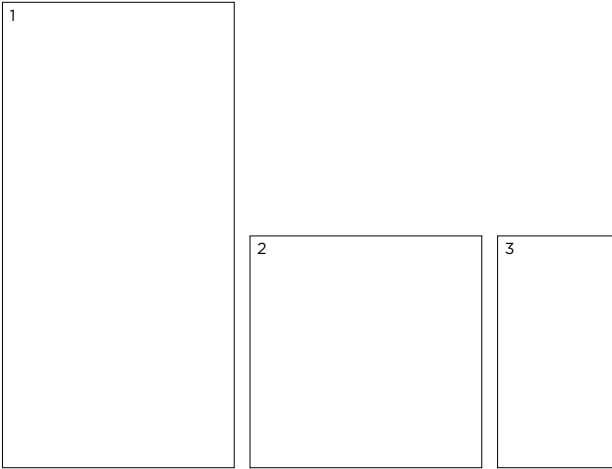


DCRK 04



DCRK 05

Sizes



	Size (mm)	Thickness	Finish	Colour Availability
1	1197 x 597 (R)	9	Natural Shiny	All colours All colours
2	597 x 597 (R)	9	Natural Shiny	All colours All colours
3	597 x 297 (R)	9	Natural Shiny Bush Hammered	All colours All colours All colours
	Plinth Skirting 597 x 46 (R)	9	Natural Shiny	All colours All colours

(R) Rectified size – square edge with bevel. Mosaics shown on next page.
Swatch colours may vary from original. Samples should be requested.

Mosaic



DCRK 01



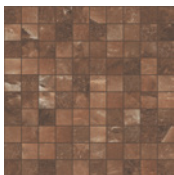
DCRK 02



DCRK 03



DCRK 04

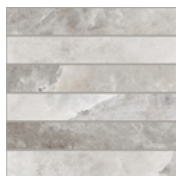


DCRK 05

3D Mosaic



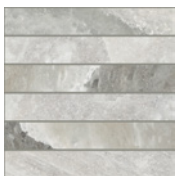
DCRK 01



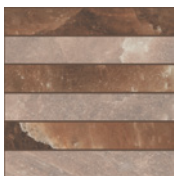
DCRK 02



DCRK 03



DCRK 04



DCRK 05

Listello Module



DCRK 01



DCRK 02



DCRK 03



DCRK 04

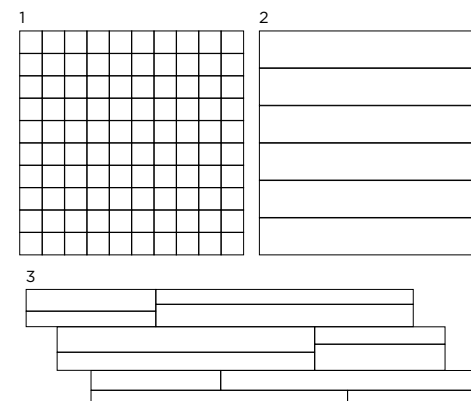


DCRK 05



Floor: DCRK 03 Natural

Mosaics



	Size (mm)	Thickness	Finish	Colour Availability
1	Mosaic 27 x 27 on 297 x 297 sheet	9	Natural Shiny	All colours All colours
2	3D Mosaic 297 x 47 on 297 x 297 sheet	9	Natural Shiny	All colours All colours
3	Listello Module on 597 x 147 sheet	9	Mix*	All colours

Swatch colours may vary from original. Samples should be requested. *Mix finish is a mix of Natural and Shiny finishes.

Rock Salt

Technical Data

Product Type: Glazed Porcelain (BS EN 14411 – Group Bla)

Use: Floors & Walls

Product Code: DCRK

DIMENSION & SURFACE QUALITY

Technical Characteristics	Industry Standards	Requirement	Actual Value
Length & width	BS EN ISO 10545-2	± 0.60% (max. ± 2.0mm)	± 0.15%
Thickness	BS EN ISO 10545-2	± 5% (max. ± 0.5mm)	± 5%
Edge straightness	BS EN ISO 10545-2	± 0.50% (max. ± 1.5mm)	± 0.10%
Orthogonality (squareness)	BS EN ISO 10545-2	± 0.50% (max. ± 2.0mm)	± 0.20%
Planarity (flatness)	BS EN ISO 10545-2	± 0.50% (max. ± 2.0mm)	± 0.35%
Appearance	BS EN ISO 10545-2	> 95%	Conforms

SLIP RESISTANCE

Technical Characteristics	Industry Standards	Requirement	Finish
Areas with footwear	BS EN ISO 10545-17 (DIN 51130)	R10 from 10° to 19° R11 from 19° to 27°	Natural Bush-Hammered
Areas with bare feet	DIN 51097	B over 18° to 24°	Natural & Bush-Hammered
Slip resistance Coefficient of friction	BS 7976-2 BS EN 16165	Test results upon request	

PRODUCT QUALITY & DURABILITY

Technical Characteristics	Industry Standards	Requirement	Actual Value
Water absorption	BS EN ISO 10545-3	≤ 0.5%	0.08% (typical value)
Modulus of rupture (bending strength)	BS EN ISO 10545-4	≥ 35 N/mm²	50 N/mm² (typical value)
Breaking strength	BS EN ISO 10545-4	≥ 7.5mm ≥ 1300 N	3200 N (typical value)
Resistance to surface abrasion (glazed tiles)	BS EN ISO 10545-7	PEI *see classifications below	Class 3 (DCRK 05) Class 4 (DCRK 02, 03, 04) Class 4 (DCRK 01 Bush-Hammered finish only) Class 5 (DCRK 01)
Thermal shock resistance	BS EN ISO 10545-9	No visible defects	Resistant
Crazing resistance	BS EN ISO 10545-11	No visible signs	Resistant
Frost resistance	BS EN ISO 10545-12	No surface alteration	Resistant
Chemical resistance: Low concentrations of acids & alkalis	BS EN ISO 10545-13	No visible defects	GLA (Natural & Bush-Hammered) GLB (Shiny)
Domestic chemicals & additives for swimming pools	BS EN ISO 10545-13	UB/GB min.	GA
Stain resistance	BS EN ISO 10545-14	Min. Class 3 – glazed	Class 4 (Shiny & Bush-Hammered) Class 5 (Natural)
Reaction to fire	Based on the decision 96/603/EC and its changes	A1 _{FL} /A1	A1 _{FL} /A1
Recycled content			20.5%

*PEI classifications

PEI 1 – Very light traffic
PEI 2 – Light traffic
PEI 3 – Light to moderate traffic
PEI 4 – Moderate to heavy traffic
PEI 5 – Heavy to extra heavy traffic



All test results are based upon current test data provided by the manufacturer and are provided in good faith. Domus Group cannot be held responsible for any variation in the test data due to changes in manufacture or material characteristics. Errors & omissions excepted. Please refer to Domus Group Terms & Conditions of Sale. March 2023

DOMUS

service@domusgroup.com | t: 020 8481 9500 | domusgroup.com