

Tape

Porcelain Design



Wall: DTPE 03 Cobble,
DTPE 05 Cobble & Cobble Half Glazed

5 Colours / 1 Finish / 9 Patterns / 1 Size

A Porcelain Design range consisting of colourful patterns overlaid onto two base tiles, that create soft, fabric-like effects. The different colours and patterns are designed to blend and be paired.

Design Raw Edges

MU
TIN
A



Floor: DTPE 01 Base, Mesh & Mesh Half,
DTPE 04 Cobble, Cobble Half, Zigzag & Zigzag Half Glazed

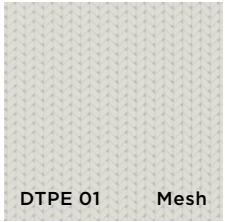


Floor: DTPE 02 Mesh, Mesh Half, Cobble & Cobble Half Glazed



Wall: DTPE 01 Base, DTPE 03 Zigzag, Zigzag Half, Mesh, Mesh Half, Grainy & Grainy Half Glazed
Floor: DTPE 03 Grainy & Zigzag Glazed

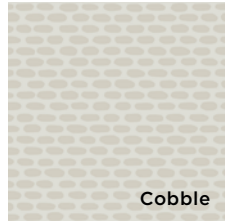
DTPE 01 Base



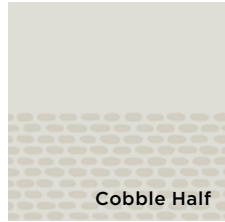
DTPE 01 Mesh



Mesh Half

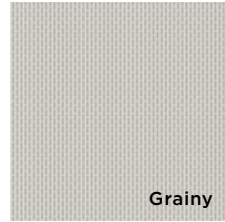


Cobble

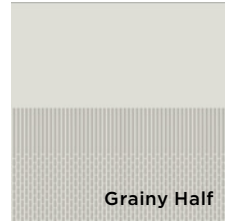


Cobble Half

DTPE 05 Base



Grainy



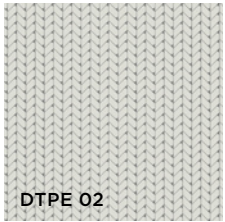
Grainy Half



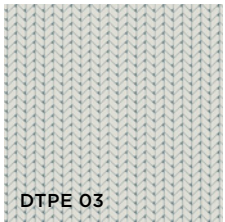
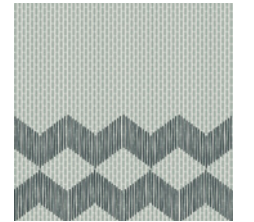
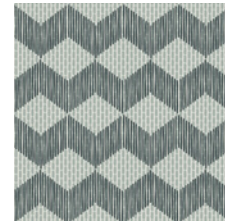
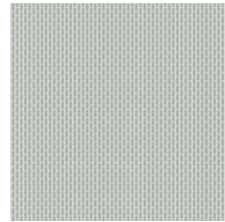
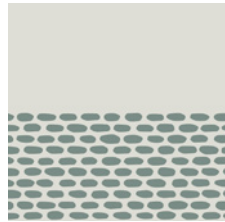
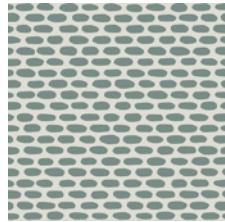
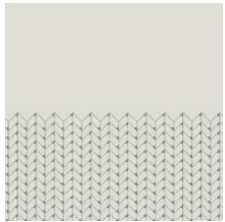
Zigzag



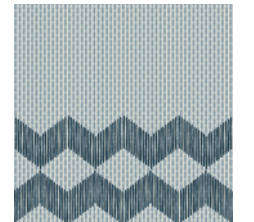
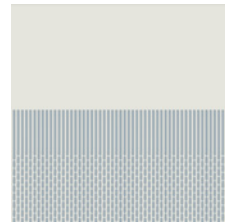
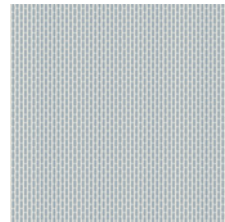
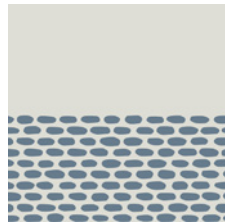
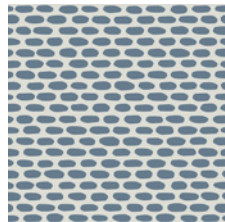
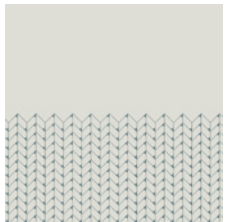
Zigzag Half



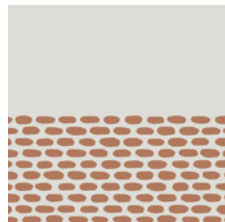
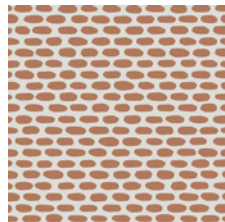
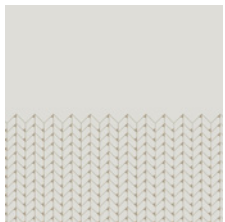
DTPE 02



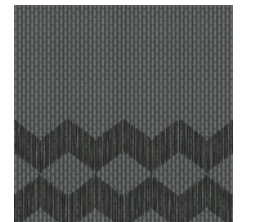
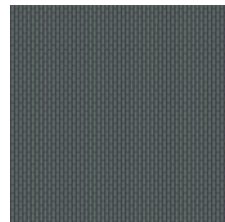
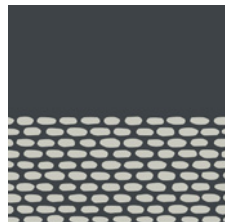
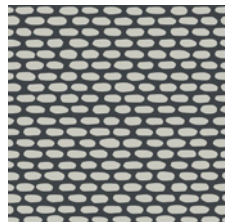
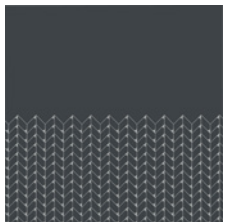
DTPE 03



DTPE 04

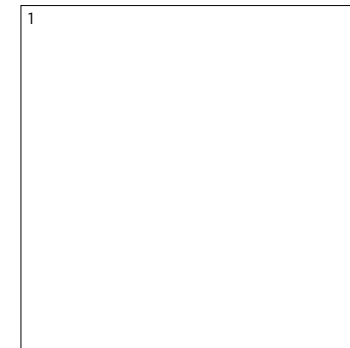


DTPE 05





Sizes



	Size (mm)	Thickness	Pattern	Colour Availability
1	205 x 205 (N)	10	Base	DTPE 01 & 05
			Mesh	All colours
			Mesh Half	
			Cobble	
			Cobble Half	
			Grainy	
			Grainy Half	
			Zigzag	
			Zigzag Half	

(N) Nominal size - pressed edge. Nine different surface patterns in a Glazed finish. Swatch colours may vary from original. Tile samples should be requested.

Tape

Technical Data

Product Type: Glazed Porcelain (BS EN 14411 – Group Bla)

Use: Floors & Walls

Product Code: DTPE

DIMENSION & SURFACE QUALITY

Technical Characteristics	Industry Standards	Requirement	Actual Value
Length & width	BS EN ISO 10545-2	± 0.60% (max. ± 2.0mm)	Conforms
Thickness	BS EN ISO 10545-2	± 5% (max. ± 0.5mm)	Conforms
Edge straightness	BS EN ISO 10545-2	± 0.50% (max. ± 1.5mm)	Conforms
Orthogonality (squareness)	BS EN ISO 10545-2	± 0.50% (max. ± 2.0mm)	Conforms
Planarity (flatness)	BS EN ISO 10545-2	± 0.50% (max. ± 2.0mm)	Conforms
Appearance	BS EN ISO 10545-2	> 95%	Conforms

SLIP RESISTANCE

Technical Characteristics	Industry Standards	Requirement	Finish
Areas with footwear	BS EN ISO 10545-17 (DIN 51130)	R10 from 10° to 19°	Glazed
Slip resistance Coefficient of friction	BS 7976-2	Test results upon request	

PRODUCT QUALITY & DURABILITY

Technical Characteristics	Industry Standards	Requirement	Actual Value
Water absorption	BS EN ISO 10545-3	≤ 0.5%	0.06% (typical value)
Modulus of rupture (bending strength)	BS EN ISO 10545-4	≥ 35 N/mm ²	Conforms
Breaking strength	BS EN ISO 10545-4	≥ 1300 N	Conforms
Resistance to surface abrasion	BS EN ISO 10545-7	PEI* see classifications below	DTPE 05 – Class 3 DTPE 01, 02, 03 & 04 – Class 4
Thermal shock resistance	BS EN ISO 10545-9	No visible defects	Resistant
Crazing resistance	BS EN ISO 10545-11	No visible signs	Resistant
Frost resistance	BS EN ISO 10545-12	No surface alteration	Resistant
Chemical resistance: Low concentrations of acids & alkalis	BS EN ISO 10545-13	No visible defects	GLA-GLB
High concentrations of acids & alkalis	BS EN ISO 10545-13	No visible defects	GHA-GHB
Domestic chemicals & additives for swimming pools	BS EN ISO 10545-13	GB min.	A
Stain resistance	BS EN ISO 10545-14	Min. Class 3	Class 5
Reaction to fire	Based on the decision 96/603/EC and its changes	A1/A1 _{FL}	A1/A1 _{FL}
Recycled content			20%

*PEI classifications
 PEI 2 - Light traffic
 PEI 3 - Light to moderate traffic
 PEI 4 - Moderate to heavy traffic
 PEI 5 - Heavy to extra heavy traffic



All test results are based upon current test data provided by the manufacturer and are provided in good faith. Domus Group cannot be held responsible for any variation in the test data due to changes in manufacture or material characteristics. Errors & omissions excepted. Please refer to Domus Group Terms & Conditions of Sale. October 2019

DOMUS

service@domusgroup.com | t: 020 8481 9500 | domusgroup.com