

# Elementa Slim

*Lightweight Slabs / Porcelain Stone*



Floor: DGETL 02 Chevron Matt

**3 Colours / 2 Finishes / 9 Sizes / 2 Mosaics**

Elementa Slim is an elegant and enveloping porcelain slab range that conveys naturalness, welcoming warmth and a sense of relaxation. Its natural allure, enhanced by the delicate chromatic vibrations of its neutral tones, balances perfectly with warm materials such as wood and the green accents of vegetation.



Shower Wall: DGETL 03 Chevron Mosaic Matt  
Wall: DGETL 03 Matt  
Floor: DGETL 03 Mosaic Matt



Wall & Floor: DGETL 02 Matt



Wall (Top): DGETL 01 Mosaic  
Wall (Bottom): DGETL 01 Large Hexagon & DGETL 01 Diamond Matt  
Floor: DGETL 01 Large Hexagon Matt



DGETL 01

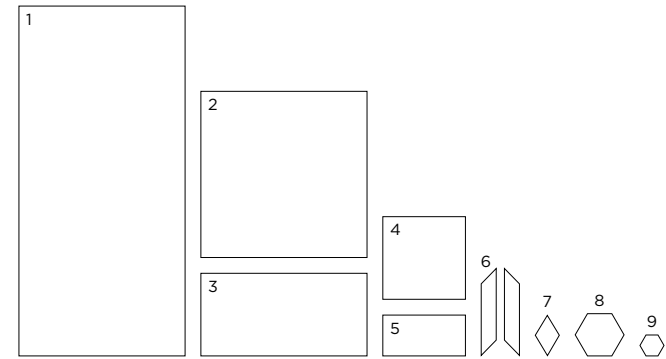


DGETL 02



DGETL 03

## Sizes

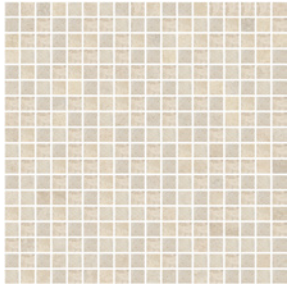


	Size (mm)	Thickness	Finish	Colour Availability
1	2500 x 1190 (R)	6	Matt Soft	All colours All colours
2	1190 x 1190 (R)	6	Matt Soft	All colours All colours
3	1190 x 594 (R)	6	Matt Soft	All colours All colours
4	594 x 594 (R)	6	Matt Soft	All colours All colours
5	594 x 296 (R)	6	Matt Soft	All colours All colours
6	Chevron 638 x 115 (R)	6	Matt Soft	All colours All colours
7	Diamond 296 x 177	6	Matt	All colours
8	Large Hexagon 354 x 306	6	Matt	All colours
9	Small Hexagon 177 x 154	6	Matt	All colours

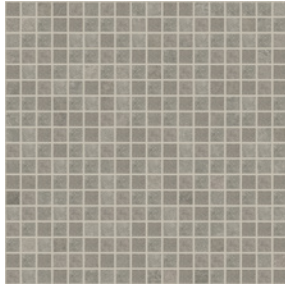
(R) Rectified size – squared edge with bevel. Mosaics and special pieces shown on next page. Swatch colours may vary from original. Samples should be requested. There are 5 chevron left pieces and 5 chevron right pieces equally mixed in a box and cannot be purchased separately.

# Mosaics & Special Pieces

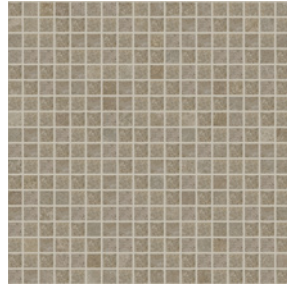
## Mosaic 15 x 15mm



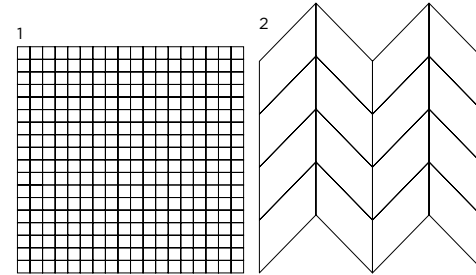
DGETL 01 Mosaic



DGETL 02 Mosaic



DGETL 03 Mosaic



## Chevron Mosaic



DGETL 01 Chevron Mosaic



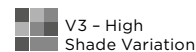
DGETL 02 Chevron Mosaic



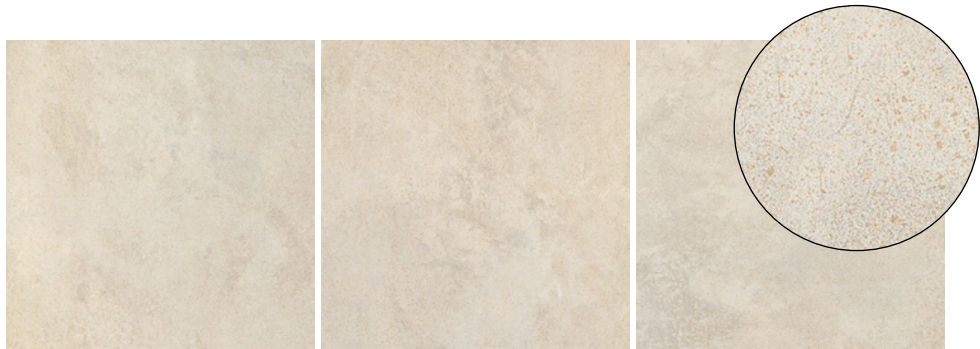
DGETL 03 Chevron Mosaic

	Size (mm)	Thickness	Finish	Colour Availability
1	Mosaic 15 x 15 on 300 x 300 sheet	6	Matt	All colours
2	Chevron Mosaic on 300 x 300 sheet	6	Matt	All colours
	Skirting 1190 x 71 (R)	6	Matt	All colours
	Gradino Costa Retta 1190 x 330 x 40 (R)	30	Matt	All colours
	Gradino Costa Retta 594 x 330 x 40 (R)	30	Matt	All colours

(R) Rectified size - squared edge with bevel. Swatch colours may vary from original. Samples should be requested.

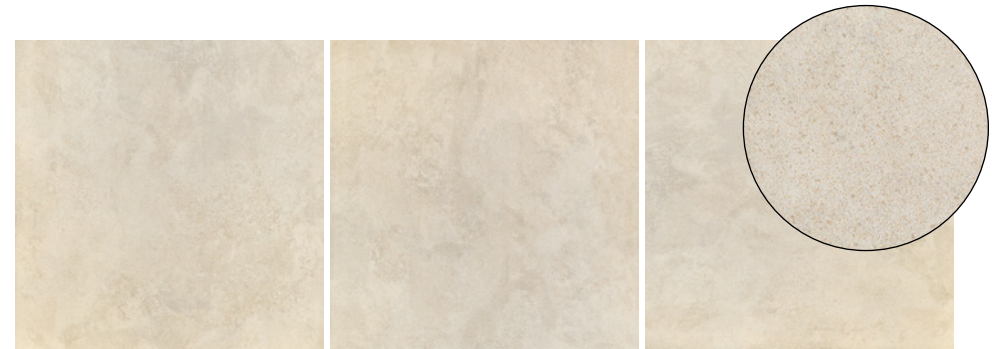


# V3 - High Shade Variation



DGETL 01 Soft

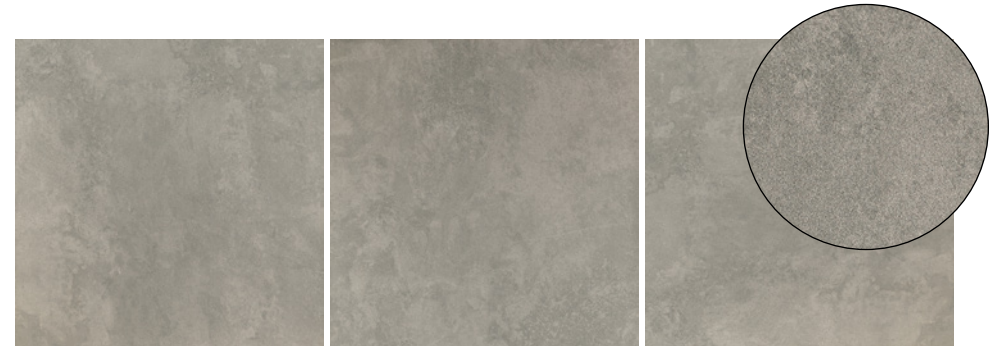
# V3 - High Shade Variation



DGETL 01 Matt



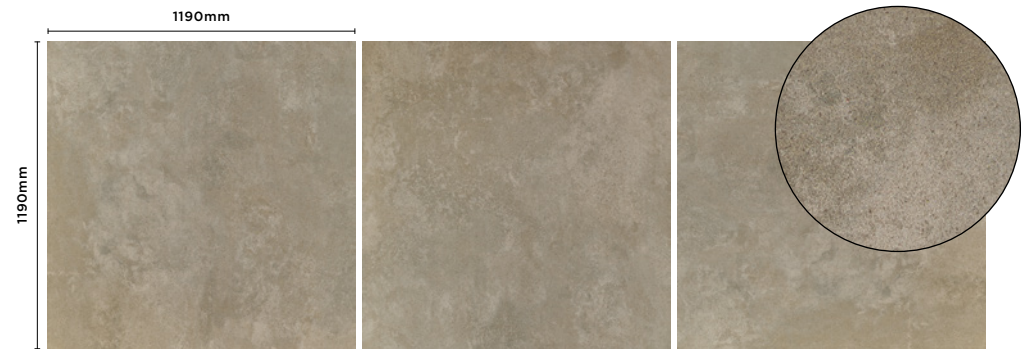
DGETL 02 Soft



DGETL 02 Matt



DGETL 03 Soft



DGETL 03 Matt

# Elementa Slim

## Technical Data

**Product Type:** Unglazed Porcelain (BS EN 14411 – Group BIa)

**Use:** Floors & Walls

**Product Code:** DGETL

### DIMENSION & SURFACE QUALITY

Technical Characteristics	Industry Standards	Requirement (for nominal size <i>N</i> )		Actual Value
		70mm ≤N<150mm	N ≥ 150mm	
Length & width	BS EN ISO 10545-2	± 0.9mm	± 0.60% (max. ± 2.0mm)	Conforms
Thickness	BS EN ISO 10545-2	± 0.5mm	± 5% (max. ± 0.5mm)	Conforms
Edge straightness	BS EN ISO 10545-2	± 0.75mm	± 0.50% (max. ± 1.5mm)	Conforms
Orthogonality (squareness)	BS EN ISO 10545-2	± 0.75mm	± 0.50% (max. ± 2.0mm)	Conforms
Planarity (flatness)	BS EN ISO 10545-2	± 0.75mm	± 0.50% (max. ± 2.0mm)	Conforms
Appearance	BS EN ISO 10545-2	> 95%		Conforms

### SLIP RESISTANCE

Technical Characteristics	Industry Standards	Requirement	Finish
Areas with footwear	BS EN ISO 10545-17 (DIN 51130)	R9 from 3° to 10° R10 from 10° to 19°	Soft Matt
Areas with bare feet	DIN 51097	B over 18° to 24°	Matt
Slip resistance (Pendulum) Coefficient of friction	BS EN 16165	Test results upon request	

### PRODUCT QUALITY & DURABILITY

Technical Characteristics	Industry Standards	Requirement	Actual Value
Water absorption	BS EN ISO 10545-3	≤ 0.5%	≤ 0.1% (Typical value)
Modulus of rupture (bending strength)	BS EN ISO 10545-4	≥ 35 N/mm <sup>2</sup>	≥ 40 N/mm <sup>2</sup> (Typical value)
Breaking strength	BS EN ISO 10545-4	< 7.5mm ≥ 700 N	> 700 N (Typical value)
Resistance to deep abrasion (unglazed tiles)	BS EN ISO 10545-6	≤ 175 mm <sup>3</sup>	≤ 145 mm <sup>3</sup> (Typical value)
Linear thermal expansion coefficient	BS EN ISO 10545-8	Declared value	≤ 7x10 <sup>-6</sup> /°C (Typical value)
Thermal shock resistance	BS EN ISO 10545-9	No visible defects	Resistant
Frost resistance	BS EN ISO 10545-12	No surface alteration	Resistant
Chemical resistance: Domestic chemicals & additives for swimming pools	BS EN ISO 10545-13	UB/GB min.	Resistant
Stain resistance	BS EN ISO 10545-14	Declared value - unglazed	Resistant
Reaction to fire	Based on the decision 96/603/EC and its changes	A1 <sub>FL</sub> /A1	A1 <sub>FL</sub> /A1
Recycled content			41%



All test results are based upon current test data provided by the manufacturer and are provided in good faith. Domus Group cannot be held responsible for any variation in the test data due to changes in manufacture or material characteristics. Errors & omissions excepted. Please refer to Domus Group Terms & Conditions of Sale. November 2023

**DOMUS**

service@domusgroup.com | t: 020 8481 9500 | domusgroup.com