

# Barna Wall

*Ceramic Design*



Wall (Top & Bottom): DAGYW 01 Matt  
Wall (Middle): DAGYW 01 Doolin Décor Matt

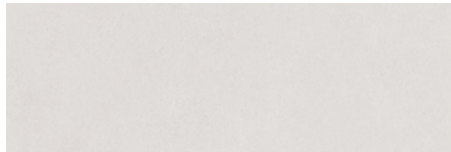
**3 Colours / 1 Finish / 1 Size / 1 Décor**

Barna Wall results from great design, beauty and functionality—the industrial, urban style creates clean, minimalist spaces. This ceramic range is suitable for interior walls and helps create continuous, functional areas when paired with its porcelain counterpart, Barna.

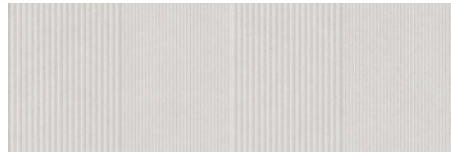


Wall: DAGYW 03 Doolin Décor Matt

# Sizes



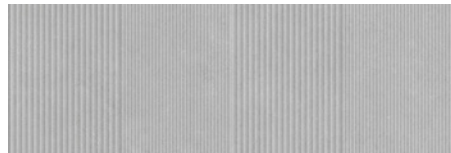
DAGYW 01



DAGYW 01 Doolin Décor



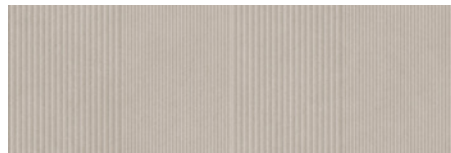
DAGYW 02



DAGYW 02 Doolin Décor



DAGYW 03



DAGYW 03 Doolin Décor



	Size (mm)	Thickness	Finish	Colour Availability
1	900 x 300 (R)	8.7	Matt	All colours
	Doolin Décor 900 x 300 (R)	10.8	Matt	All colours

(R) Rectified size - square edge with bevel. Swatch colours may vary from original. Samples should be requested. Recommended for use on internal walls only.

# Barna Wall

Technical Data

**Product Type: Glazed Ceramic (BS EN 14411 – Group BIII)**

**Use: Walls (Internal only)**

**Product Code: DAGYW**

## DIMENSION & SURFACE QUALITY

Technical Characteristics	Industry Standards	Requirement	Actual Value
Length & width	BS EN ISO 10545-2	± 0.50% (max. ± 2.0mm)	Conforms
Thickness	BS EN ISO 10545-2	± 10% (max. ± 0.5mm)	Conforms
Edge straightness	BS EN ISO 10545-2	± 0.30% (max. ± 1.5mm)	Conforms
Orthogonality (squareness)	BS EN ISO 10545-2	± 0.50% (max. ± 2.0mm)	Conforms
Planarity (flatness): Centre curvature	BS EN ISO 10545-2	+ 0.5% (max. + 2.0mm) - 0.3% (max. - 1.5mm)	Conforms
Edge curvature	BS EN ISO 10545-2	+ 0.5% (max. + 2.0mm) - 0.3% (max. - 1.5mm)	Conforms
Warpage	BS EN ISO 10545-2	± 0.5% (max. ± 2.0mm)	Conforms
Appearance	BS EN ISO 10545-2	> 95%	Conforms

## PRODUCT QUALITY & DURABILITY

Technical Characteristics	Industry Standards	Requirement	Actual Value
Water absorption	BS EN ISO 10545-3	> 10%	Conforms
Modulus of rupture (bending strength)	BS EN ISO 10545-4	≥ 7.5mm thick ≥ 12 N/mm <sup>2</sup>	Conforms
Breaking strength	BS EN ISO 10545-4	≥ 7.5mm thick ≥ 600 N	Conforms
Linear thermal expansion coefficient	BS EN ISO 10545-8	Declared value	< 9x10 <sup>-6</sup> /°C (Typical value)
Thermal shock resistance	BS EN ISO 10545-9	No visible defects	Resistant
Crazing resistance	BS EN ISO 10545-11	No visible signs	Resistant
Chemical resistance: Low concentrations of acids & alkalis	BS EN ISO 10545-13	Minimum LB	Conforms
High concentrations of acids & alkalis	BS EN ISO 10545-13	Minimum HB	Conforms
Domestic chemicals & additives for swimming pools	BS EN ISO 10545-13	GB min.	Conforms
Stain resistance	BS EN ISO 10545-14	Min. Class 3	Conforms
Reaction to fire	Based on the decision 96/603/EC and its changes	A1	A1
Recycled content			29%



All test results are based upon current test data provided by the manufacturer and are provided in good faith. Domus Group cannot be held responsible for any variation in the test data due to changes in manufacture or material characteristics. Errors & omissions excepted. Please refer to Domus Group Terms & Conditions of Sale. November 2023

**DOMUS**

service@domusgroup.com | t: 020 8481 9500 | domusgroup.com