

# Tierras

Porcelain Design



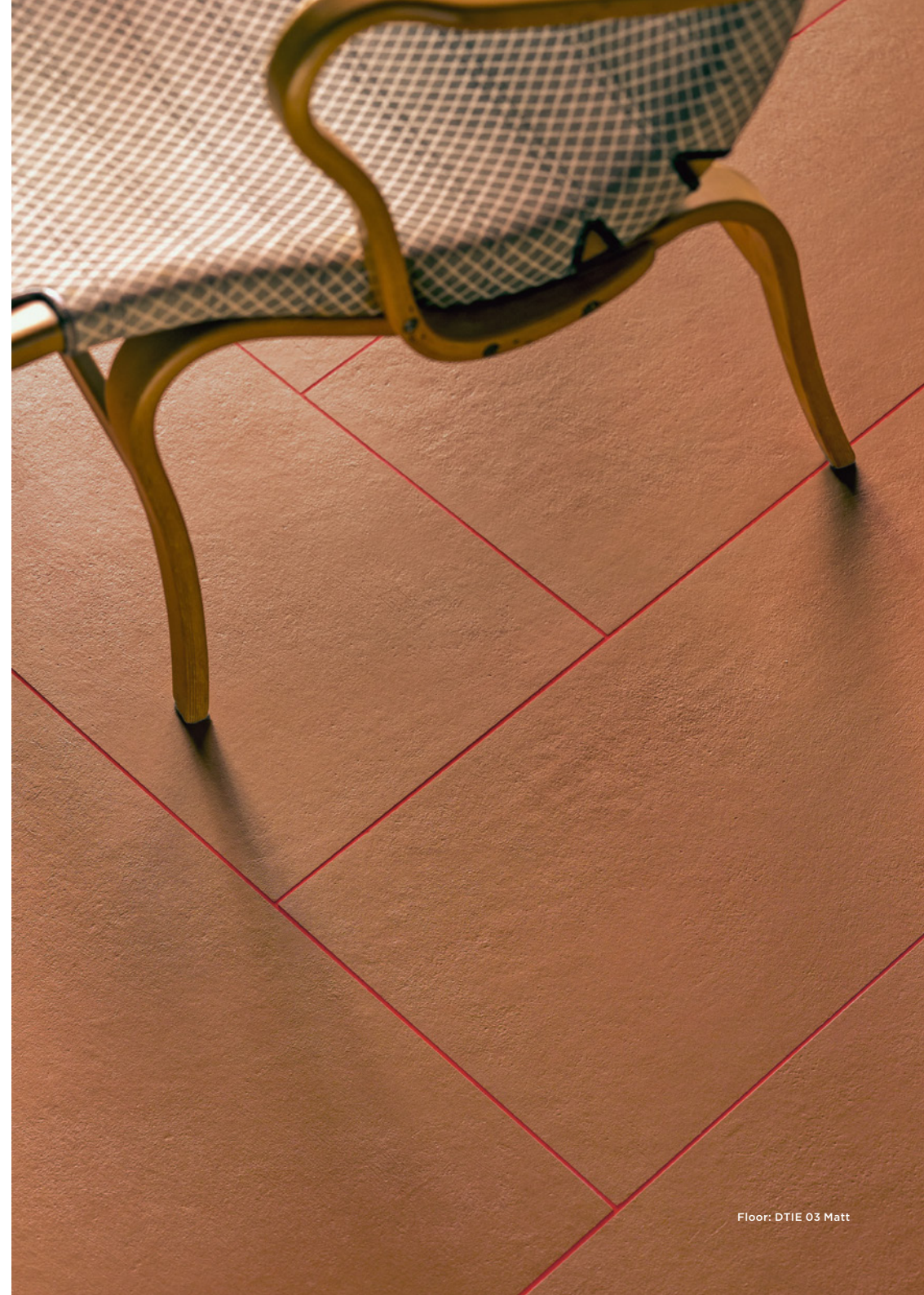
Floor: DTIE 04 & DTIE 04 Frame Décor Matt

4 Colours / 1 Finish / 3 Sizes / 2 Décors

Based on the concept of sedimentation and Mediterranean craft traditions, Tierras is a homogeneous porcelain stoneware that uses the latest dry-processing of ceramic powders. A solid substance with a palette of deep, earthy and natural colours, saturated by a black base.

Design Patricia Urquiola

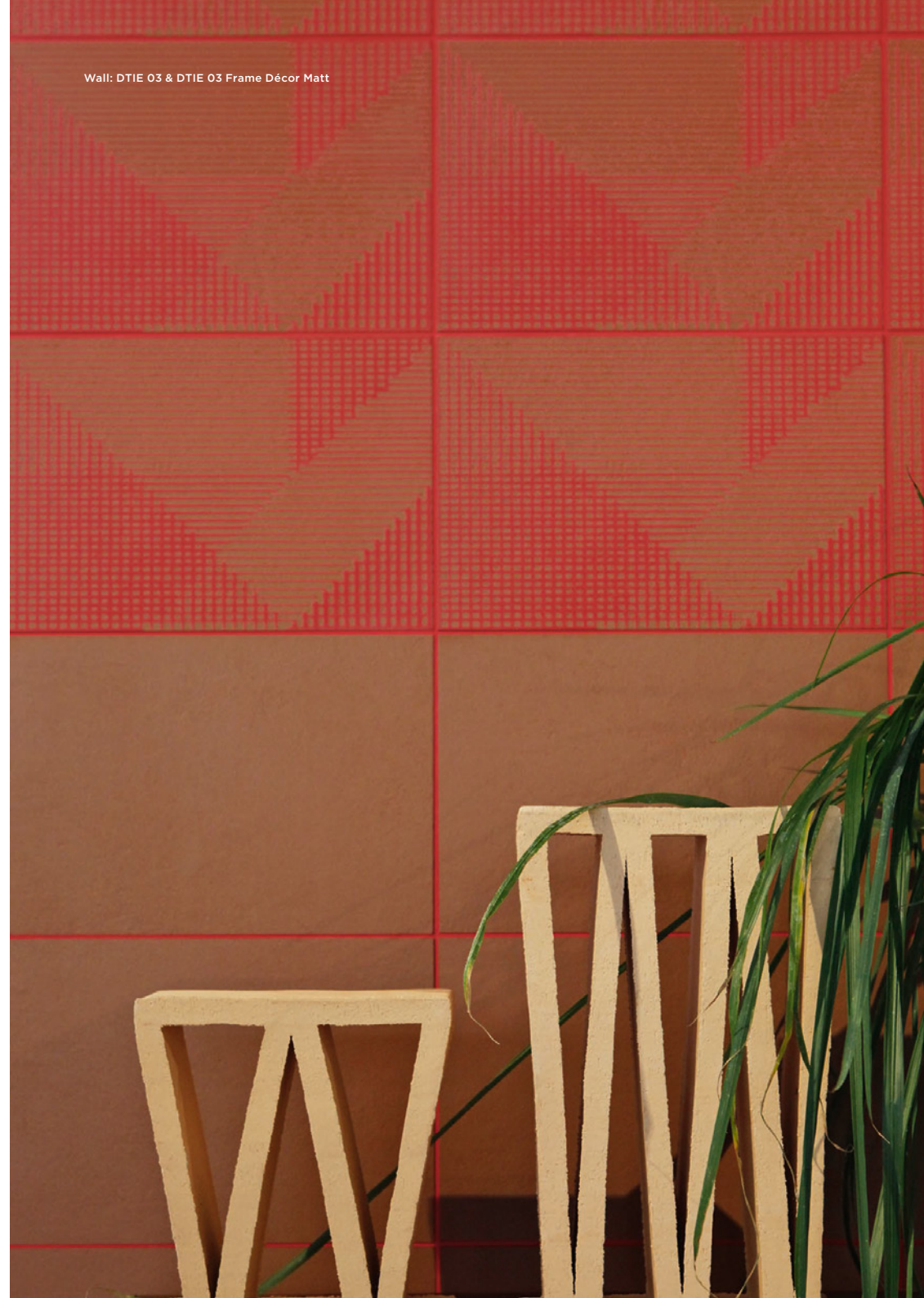
MU  
TIN  
A



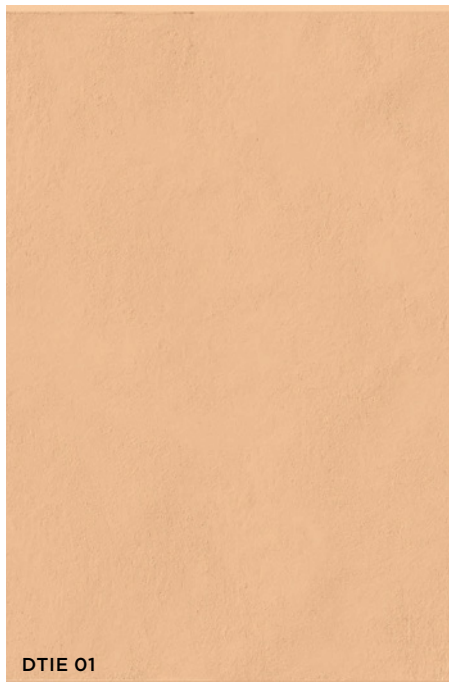
Floor: DTIE 03 Matt



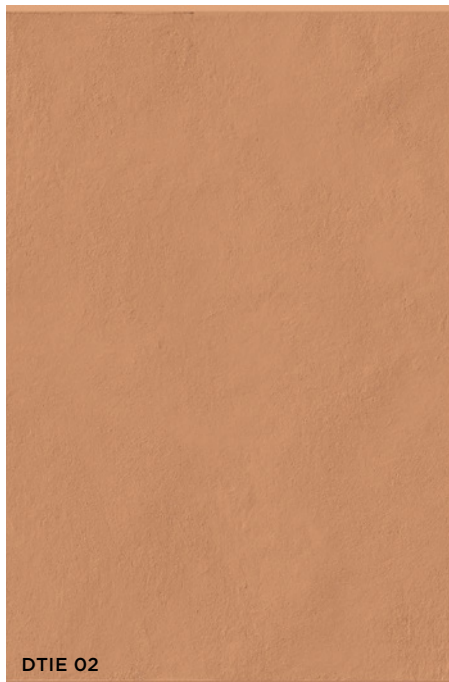
Wall: DTIE 01, 02 & 03 Trio Mix Décor Matt



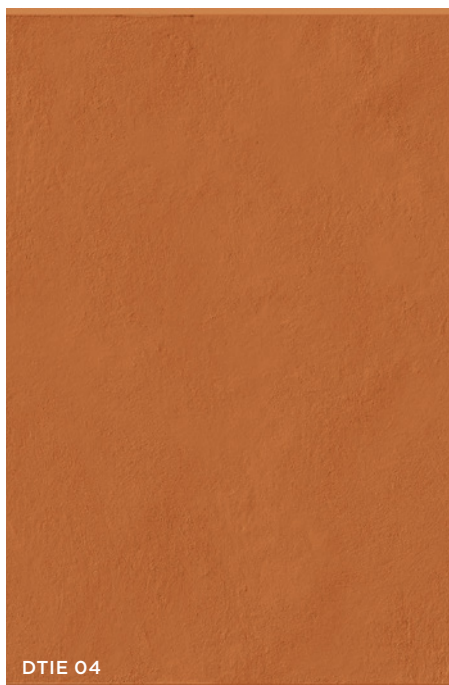
Wall: DTIE 03 & DTIE 03 Frame Décor Matt



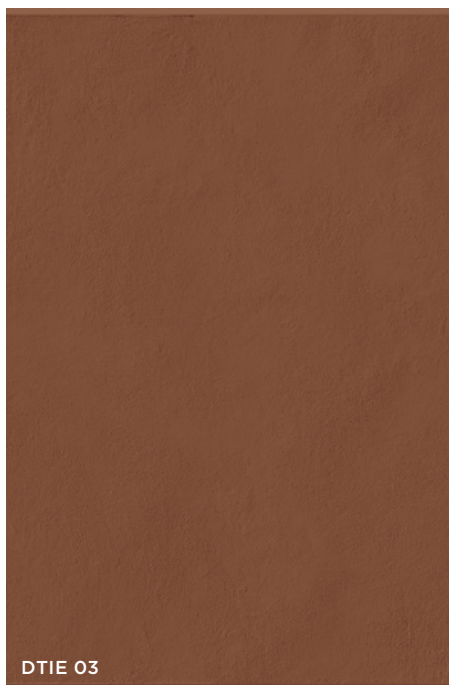
DTIE 01



DTIE 02

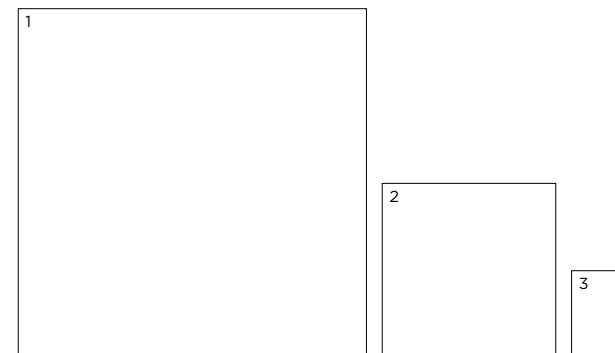


DTIE 04



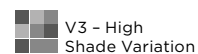
DTIE 03

# Sizes

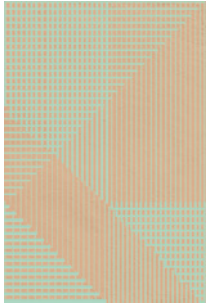


	Size (mm)	Thickness	Finish	Colour Availability
1	1190 x 1190 (R)	12	Matt	All colours
2	594 x 594 (R)	12	Matt	All colours
3	296 x 196.66 (R)	12	Matt	All colours
	Plinth Skirting 600 x 38 (R)	12	Matt	All colours
	Step Tread 1200 x 300 (R)	45	Matt	All colours
	Angle Corners 1200 x 300 (R)	45	Matt	All colours

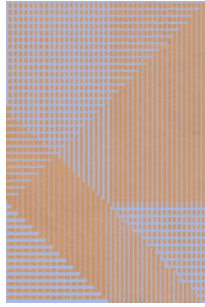
(R) Rectified size - square edge with bevel. Décors shown on next page.  
Swatch colours may vary from original. Samples should be requested.



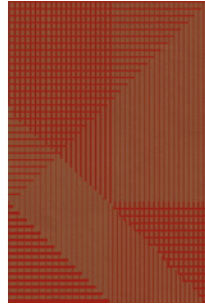
### Frame Décor



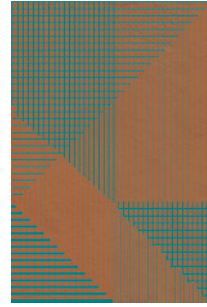
DTIE 01



DTIE 02



DTIE 03



DTIE 04

### Trio Mix Décor



DTIE 01, 02 & 03



DTIE 01, 02 & 05

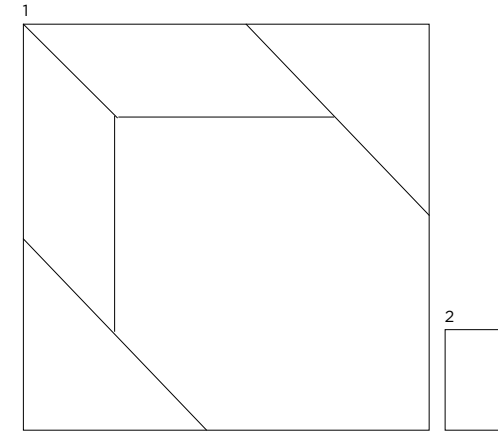


DTIE 02, 03 & 04



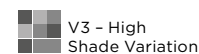
DTIE 04, 05 & 06

## Décors



	Size (mm)	Thickness	Finish	Colour Availability
1	Trio Mix Décor 1190 x 1190 (R)	12	Matt	Mix of DTIE 01, 02 & 03 Mix of DTIE 01, 02 & 05 Mix of DTIE 02, 03 & 04 Mix of DTIE 04, 05 & 06
2	Frame Décor 296 x 196.66 (R)	12	Matt	All colours

(R) Rectified size – square edge with bevel. Swatch colours may vary from original. Samples should be requested. Each Trio Mix Décor is composed of three patterns with mixed colours. Patterns cannot be picked and are not sold singularly. DTIE 05 & 06 are colours used exclusively in the Trio Mix Décors and are not part of the standard sizes or Frame Décors.



## Variations

---



## Trio Mix Décor

---



# Tierras

## Technical Data

**Product Type:** Unglazed Porcelain (BS EN 14411 – Group Bla)

**Use:** Floors & Walls

**Product Code:** DTIE

### DIMENSION & SURFACE QUALITY

Technical Characteristics	Industry Standards	Requirement	Actual Value
Length & width	BS EN ISO 10545-2	± 0.60% (max. ± 2.0mm)	Conforms
Thickness	BS EN ISO 10545-2	± 5% (max. ± 0.5mm)	Conforms
Edge straightness	BS EN ISO 10545-2	± 0.50% (max. ± 1.5 mm)	Conforms
Orthogonality (squareness)	BS EN ISO 10545-2	± 0.50% (max. ± 2.0mm)	Conforms
Planarity (flatness)	BS EN ISO 10545-2	± 0.50% (max. ± 2.0mm)	Conforms
Appearance	BS EN ISO 10545-2	> 95%	Conforms

### SLIP RESISTANCE

Technical Characteristics	Industry Standards	Requirement	Finish
Areas with footwear	BS EN ISO 10545-17 (DIN 51130)	R10 from 10° to 19°	Matt
Slip resistance Coefficient of friction	BS 7976-2	Test results upon request	

### PRODUCT QUALITY & DURABILITY

Technical Characteristics	Industry Standards	Requirement	Actual Value
Water absorption	BS EN ISO 10545-3	≤ 0.5%	0.06% (Typical value)
Modulus of rupture (bending strength)	BS EN ISO 10545-4	≥ 35 N/mm <sup>2</sup>	Conforms
Breaking strength	BS EN ISO 10545-4	≥ 1300 N	Conforms
Resistance to deep abrasion	BS EN ISO 10545-6	≤ 175 mm <sup>3</sup>	Conforms
Thermal shock resistance	BS EN ISO 10545-9	No visible defects	Resistant
Frost resistance	BS EN ISO 10545-12	No surface alteration	Resistant
Chemical resistance: Low concentrations of acids & alkalis	BS EN ISO 10545-13	No visible defects	ULA
High concentrations of acids & alkalis	BS EN ISO 10545-13	No visible defects	UHA
Domestic chemicals & additives for swimming pools	BS EN ISO 10545-13	UB min.	UA
Stain resistance	BS EN ISO 10545-14	Declared value	Class 5
Reaction to fire	Based on the decision 96/603/EC and its changes	A1 <sub>FL</sub> /A1	A1 <sub>FL</sub> /A1
Recycled content			20%



All test results are based upon current test data provided by the manufacturer and are provided in good faith. Domus Group cannot be held responsible for any variation in the test data due to changes in manufacture or material characteristics. Errors & omissions excepted. Please refer to Domus Group Terms & Conditions of Sale. Nov. 2020

**DOMUS**

service@domusgroup.com | t: 020 8481 9500 | domusgroup.com