

# Creta Slim

*Lightweight Slabs / Porcelain Concrete*



**13 Colours / 1 Finish / 12 Sizes / 3 Mosaics**

Creta Slim consists of concrete-effect lightweight porcelain slabs in sizes up to 2.5 metres offering a palette of contemporary cementitious colours to create a modern industrial look. Refer to Creta & Creta Wall Slim for other thickness options.





Wall & Floor: DGZL 05 Natural



Wall & Floor: DGZL 08 Natural





DGZL 07



DGZL 09



DGZL 10



DGZL 12



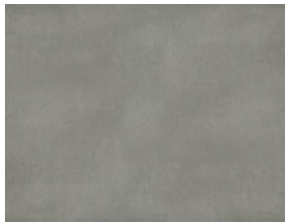
DGZL 11



DGZL 04



DGZL 01



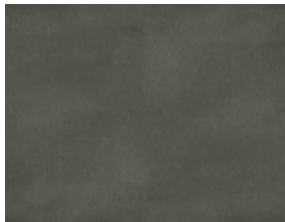
DGZL 03



DGZL 05



DGZL 08



DGZL 06

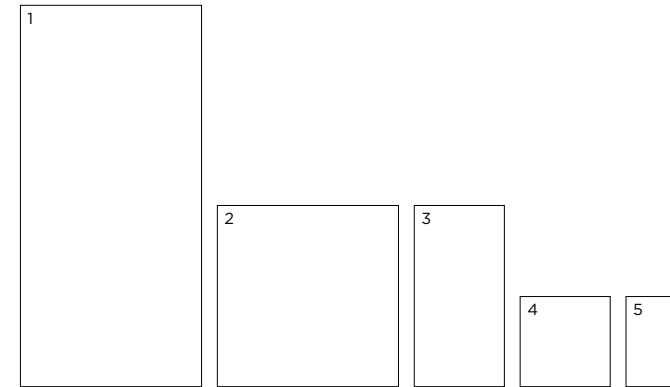


DGZL 13



DGZL 02

# Sizes



	Size (mm)	Thickness	Finish	Colour Availability
1	2500 x 1190 (R)	6	Natural	All colours
2	1190 x 1190 (R)	6	Natural	DGZL 12 & 13
3	1190 x 594 (R)	6	Natural	DGZL 12 & 13
4	594 x 594 (R)	6	Natural	DGZL 12 & 13
5	594 x 296 (R)	6	Natural	DGZL 12 & 13

(R) Rectified size - square edge with bevel. Swatch colours may vary from original. Samples should be requested. More sizes shown on next page.

V1 - Low  
Shade Variation

**DOMUS**

service@domusgroup.com | t: 020 8481 9500 | domusgroup.com

# More Sizes

Large Hexagon



DGZL 12



DGZL 13

Small Hexagon



DGZL 12



DGZL 13

Diamond



DGZL 12



DGZL 13

Pentagon

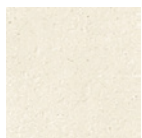


DGZL 12



DGZL 13

Small

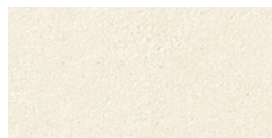


DGZL 12



DGZL 13

Brick

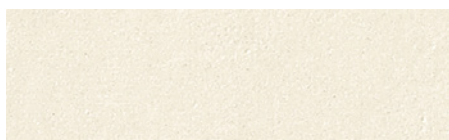


DGZL 12



DGZL 13

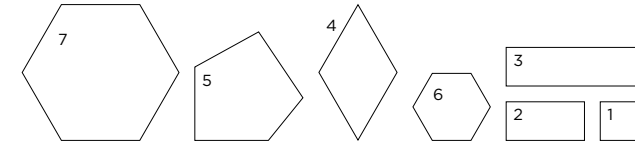
Plate



DGZL 12



DGZL 13



	Size (mm)	Thickness	Finish	Colour Availability
1	Small 87.5 x 87.5 (R)	6	Natural	DGZL 12 & 13
2	Brick 177 x 87.5 (R)	6	Natural	DGZL 12 & 13
3	Plate 296 x 87.5 (R)	6	Natural	DGZL 12 & 13
4	Diamond 306 x 177 (R)	6	Natural	DGZL 12 & 13
5	Pentagon 166.2 x 96.5 (R)	6	Natural	DGZL 12 & 13
6	Small Hexagon 177 x 153 (R)	6	Natural	DGZL 12 & 13
7	Large Hexagon 354 x 306 (R)	6	Natural	DGZL 12 & 13

(R) Rectified size – square edge with bevel. Swatch colours may vary from original. Samples should be requested. Mosaics and special pieces shown on next page.

# Mosaics & Special Pieces

Stripes Mosaic 1200 x 15mm

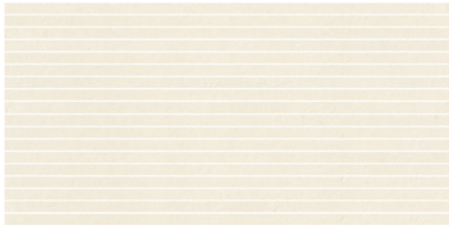


DGZL 12

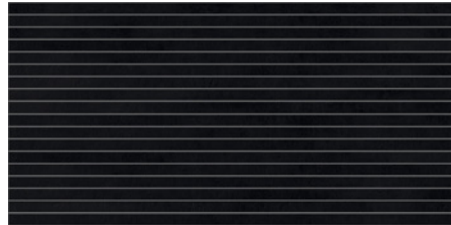


DGZL 13

Stripes Mosaic 600 x 15mm

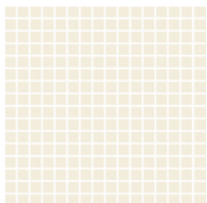


DGZL 12

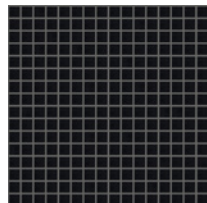


DGZL 13

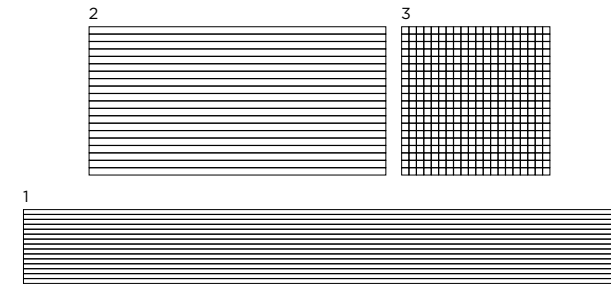
Mosaic 15 x 15mm



DGZL 12



DGZL 13



	Size (mm)	Thickness	Finish	Colour Availability
1	Stripes Mosaic 1200 x 15 on 1200 x 150 sheet	6	Natural	DGZL 12 & 13
2	Stripes Mosaic 600 x 15 on 600 x 300 sheet	6	Natural	DGZL 12 & 13
3	Mosaic 15 x 15 on 300 x 300 sheet	6	Natural	DGZL 12 & 13
	Skirting 120 x 7.5	6	Natural	DGZL 12 & 13

Swatch colours may vary from original. Samples should be requested.

# Creta Slim

## Technical Data

**Product Type:** Unglazed Porcelain (BS EN 14411 – Group Bla)

**Use:** Floors & Walls

**Product Code:** DGCS / DGZL

### DIMENSION & SURFACE QUALITY

Technical Characteristics	Industry Standards	Requirement	Actual Value
Length & width	BS EN ISO 10545-2	± 0.60% (max. ± 2.0mm)	± 0.2%
Thickness	BS EN ISO 10545-2	± 5% (max. ± 0.5mm)	± 3%
Edge straightness	BS EN ISO 10545-2	± 0.50% (max. ± 1.5mm)	± 0.2%
Orthogonality (squareness)	BS EN ISO 10545-2	± 0.50% (max. ± 2.0mm)	± 0.2%
Planarity (flatness)	BS EN ISO 10545-2	± 0.50% (max. ± 2.0mm)	± 0.2%
Appearance	BS EN ISO 10545-2	> 95%	Conforms

### SLIP RESISTANCE

Technical Characteristics	Industry Standards	Requirement	Finish
Areas with footwear	BS EN ISO 10545-17 (DIN 51130)	R10 from 10° to 19°	Natural
Slip resistance Coefficient of friction	BS 7976-2	Test results upon request	

### PRODUCT QUALITY & DURABILITY

Technical Characteristics	Industry Standards	Requirement	Actual Value
Water absorption	BS EN ISO 10545-3	≤ 0.5%	≤ 0.1% (Typical value)
Modulus of rupture (bending strength)	BS EN ISO 10545-4	≥ 35 N/mm <sup>2</sup>	≥ 40 N/mm <sup>2</sup> (Typical value)
Breaking strength	BS EN ISO 10545-4	≥ 700 N	Conforms
Resistance to deep abrasion (unglazed tiles)	BS EN ISO 10545-6	≤ 175mm <sup>3</sup>	≤ 145 mm <sup>3</sup> (Typical value)
Linear thermal expansion coefficient	BS EN ISO 10545-8	Declared value	≤ 7x10 <sup>-6</sup> / °C <sup>-1</sup> (Typical value)
Thermal shock resistance	BS EN ISO 10545-9	No visible defects	Resistant
Frost resistance	BS EN ISO 10545-12	No surface alteration	Resistant
Chemical resistance: Low concentrations of acids & alkalis	BS EN ISO 10545-13	No visible defects	ULA
High concentrations of acids & alkalis	BS EN ISO 10545-13	No visible defects	UHA
Domestic chemicals & additives for swimming pools	BS EN ISO 10545-13	UB min.	UA
Stain resistance	BS EN ISO 10545-14	Declared value	Class 5
Reaction to fire	Based on the decision 96/603/EC and its changes	A1 <sub>FL</sub> /A1	A1 <sub>FL</sub> /A1
Recycled content			4%

All test results are based upon current test data provided by the manufacturer and are provided in good faith. Domus Group cannot be held responsible for any variation in the test data due to changes in manufacture or material characteristics. Errors & omissions excepted. Please refer to Domus Group Terms & Conditions of Sale. July 2019



**DOMUS**

service@domusgroup.com | t: 020 8481 9500 | domusgroup.com