

# Kaleidos

*Ceramic Colours*



**11 Colours / 2 Finishes / 1 Size**

Kaleidos is a beautiful range of ceramic tiles for walls made with deep rich colour glazes and produced in a singular rectangular format. Its blended shade variation on an undulating surface provides a stylish craft-like handmade product.



Wall: DWKL 09 Gloss



Wall: DWKL 03 Gloss



Wall: DWKL 02 Gloss



Wall: DWKL 06 Gloss

# Matt Colours

---



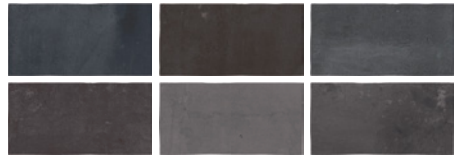
DWKA 01



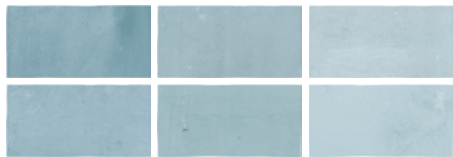
DWKA 02



DWKA 04



DWKA 09



DWKA 05



DWKA 08



DWKA 03



DWKA 07



DWKA 06

# Gloss Colours

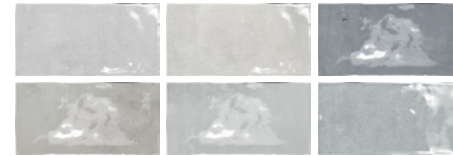
---



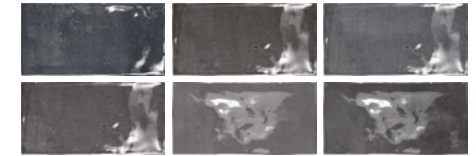
DWKL 01



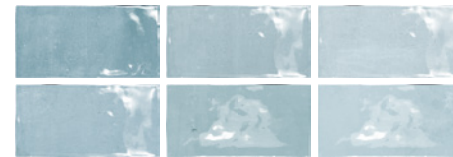
DWKL 02



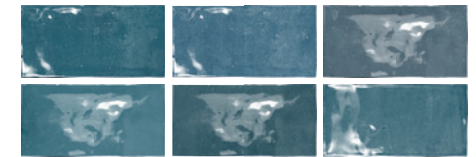
DWKL 04



DWKL 09



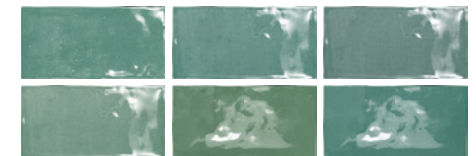
DWKL 05



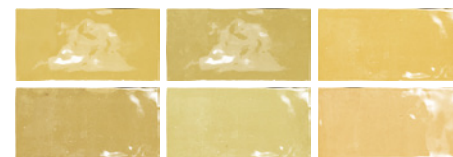
DWKL 08



DWKL 03



DWKL 07



DWKL 06



DWKL 10



DWKL 11



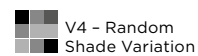
Wall: DWKA 01 Matt & DWKL 01 Gloss

# Sizes



	Size (mm)	Thickness	Finish	Colour Availability
1	125.7 x 62.3 (N)	10	Matt Gloss	All DWKA colours All DWKL colours
	Bullnose 125.7 x 35 (N)	10	Matt Gloss	All DWKA colours DWKL 01 - 09

(N) Nominal size - pressed edge. For wall use only. Swatch colours may vary from original. Samples should be requested. Each colour contains a randomly blended mix of 12 different shades, except DWKL 10 & 11. Each colour also contains 16 randomly blended subtly different textures.



**DOMUS**

service@domusgroup.com | t: 020 8481 9500 | domusgroup.com

# Kaleidos

Technical Data

**Product Type:** Glazed Ceramic (BS EN 14411 – Group BIII)

**Use:** Walls (Internal only)

**Product Code:** DWKL/DWKA

## DIMENSION & SURFACE QUALITY

Technical Characteristics	Industry Standards	Requirement (for nominal size <i>N</i> )		Actual Value
		70mm ≤ <i>N</i> < 150mm	<i>N</i> ≥ 150mm	
Length & width	BS EN ISO 10545-2	± 0.75mm	± 0.5% (max. ±2.0mm)	Conforms

NOTE: THIS IS AN ARTISAN PRODUCT DESIGNED TO HAVE AN IRREGULAR SURFACE & EDGE PROFILES. DIMENSIONS MAY VARY. TILES MAY CONTAIN SMALL IMPERFECTIONS / TINY CHIPS ON EDGES.

## PRODUCT QUALITY & DURABILITY

Technical Characteristics	Industry Standards	Requirement	Actual Value
Water absorption	BS EN ISO 10545-3	> 10%	Conforms
Modulus of rupture (bending strength)	BS EN ISO 10545-4	≥ 7.5mm thick ≥ 12 N/mm <sup>2</sup>	Conforms
Crazing resistance	BS EN ISO 10545-11	No visible defects	Resistant (Except metallic finishes - DWKL 10 & 11)*
Chemical resistance:			
High concentrations of acids & alkalis	BS EN ISO 10545-13	No visible defects	GHA (Except metallic finishes)*
Domestic chemicals & additives for swimming pools	BS EN ISO 10545-13	GB min.	GA
Stain resistance	BS EN ISO 10545-14	Min. Class 3	Class 5
Reaction to fire	Based on the decision 96/603/EC and its changes		A1
Recycled content			56%

\* Note: Avoid using metallic finishes in showers (due to micro crazing). Metallic finishes should only be cleaned with neutral detergents (no acidic or strongly alkaline products).

