

Eternal 70

Engineered Vinyl



Floor: EVET 7012 Matt

22 Colours / 1 Finish / 4 Sizes

Eternal 70 is a range of looselay vinyl planks and tiles in a refined palette of wood and stone textures. Suitable for calm, collaborative settings and dynamic, inspiring work environments.



Floor: EVET 7054 Matt



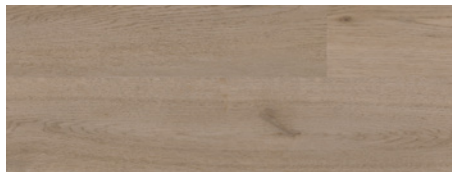
Floor: EVET 7051 Matt



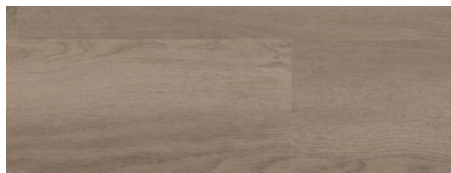
Floor: EVET 7004 Matt



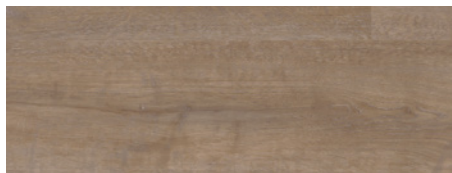
EVET 7006



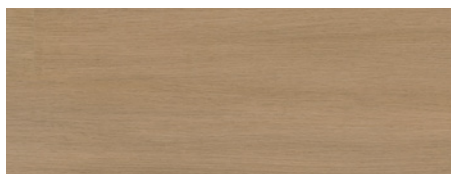
EVET 7008



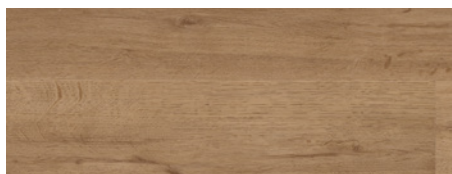
EVET 7003



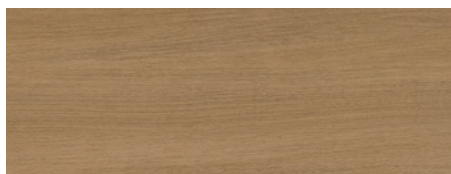
EVET 7001



EVET 7011



EVET 7010



EVET 7012



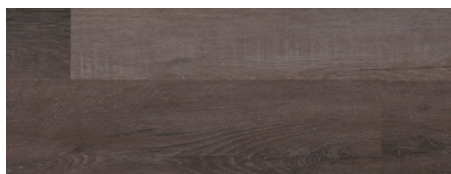
EVET 7009



EVET 7005



EVET 7004

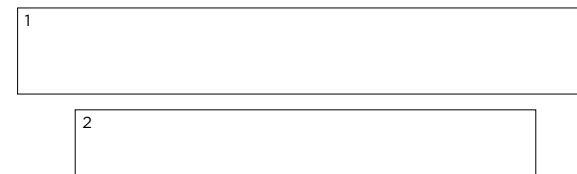


EVET 7007



EVET 7002

Sizes: Wood-Effect

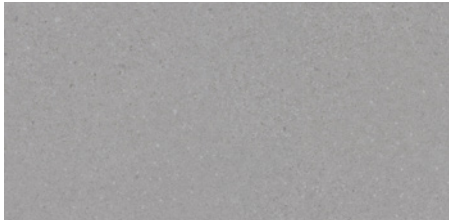


	Size (mm)	Thickness	Finish	Colour Availability
1	Looselay 228.6 x 1524	5	Matt	EVET 7001-7004
2	Looselay 177.8 x 1219.2	5	Matt	EVET 7005-7012

Swatch colours may vary from original. Samples should be requested.

Specification

Format:	Plank
Treatment:	PUR Ecoprotec™
Texture:	Embossed
Edge Detail:	4-way micro-bevel
Sustainability:	100% phthalate-free. Low VOC. 100% recyclable
Durability:	Class 23 Domestic Class 34 Commercial Class 43 Industrial
Application:	Internal use only. Suitable with underfloor heating
Installation:	Recommended for looselay or bonded (tackifier adhesive) installation



EVET 7056



EVET 7058



EVET 7059



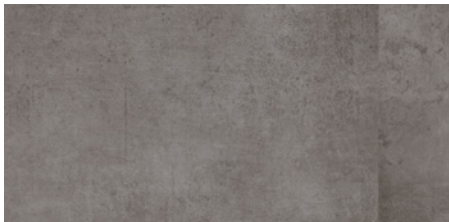
EVET 7055



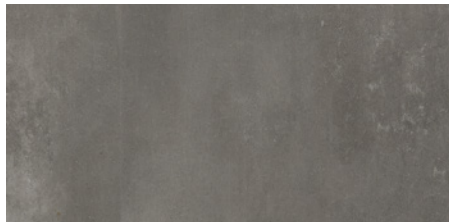
EVET 7051



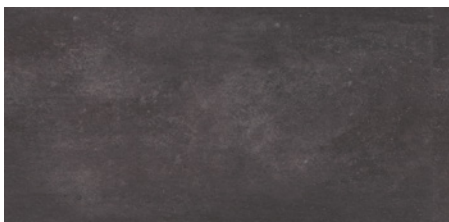
EVET 7057



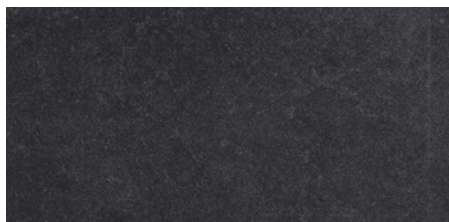
EVET 7060



EVET 7053

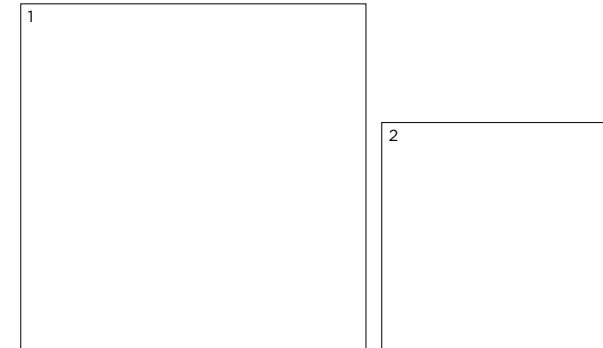


EVET 7054



EVET 7052

Sizes: Stone-Effect



	Size (mm)	Thickness	Finish	Colour Availability
1	Looselay 914.4 x 914.4	5	Matt	EVET 7053-7060
2	Looselay 600 x 600	5	Matt	EVET 7051 & 7052

Swatch colours may vary from original. Samples should be requested.

Specification

Format:	Tile
Treatment:	PUR Ecoprotec™
Texture:	Embossed
Edge Detail:	4-way micro-bevel
Sustainability:	100% phthalate-free. Low VOC. 100% recyclable
Durability:	Class 23 Domestic Class 34 Commercial Class 43 Industrial
Application:	Internal use only. Suitable with underfloor heating
Installation:	Recommended for looselay or bonded (tackifier adhesive) installation

Eternal 70

Technical Data

PERFORMANCE & DURABILITY

Technical Characteristics	Industry Standard	Performance
Product Standard	EN ISO 10582	Heterogeneous resilient floor covering
Total Thickness	EN ISO 24346	5.0mm
Wear Layer Thickness	EN ISO 24340	0.70mm
Classification	EN ISO 10874	Domestic: 23 Commercial: 33 Industrial: 43
Total Weight	EN ISO 23997	8.750g/m ²
Wear Layer Binder Content	EN 10582	Type I
Abrasion Group	EN 660-2	Group T: ≤ 2.00mm ³
Packing	EN ISO 24342	6 planks/box = 2.09m ² (228.6 x 1524mm) 52 boxes/pallet = 108.68m ² (228.6 x 1524mm) 10 planks/box = 2.17m ² (177.8 x 1219.2mm) 50 boxes/pallet = 108.50m ² (177.8 x 1219.2mm) 3 tiles/box = 2.51m ² (914.4 x 914.4mm) 40 boxes/pallet = 100.40m ² (914.4 x 914.4mm) 6 tiles/box = 2.16m ² (600 x 600mm) 40 boxes/pallet = 86.40m ² (600 x 600mm)
Surface Treatment		PUR Ecoprotec™
Locking System		Looselay
TVOC After 28 Days Indoor Air Quality	ISO 16000-9	≤ 100µg/m ³ (AgBB test)
VOC Emission Class	ISO 16000-9	A+ (French Regulation)
Plasticizer		Phthalate-free
Formaldehyde Group	EN 717-1	E1
Recyclability		100%

PERFORMANCE & DURABILITY

Technical Characteristics	Industry Standard	Performance
Dimensional Stability	EN ISO 23999	≤ 0.10%
Castor Chair	ISO 4918	No damage
Furniture Leg	EN ISO 16581	No damage
Squareness & Straightness	EN ISO 24342	≤ 0.25mm
Residual Indentation	EN ISO 24343-1	≤ 0.10mm
Impact Sound Reduction	EN ISO 717-2	ΔLw = 17dB
Light Fastness	EN ISO 105-B02	≥ 6
Slip Resistance	DIN 51130 EN 13893	R10 DS
Resistance to Chemicals	EN ISO 26987	Not affected (0)
Thermal Resistance	EN ISO 10456	0.04m ² K/W
Curl after exposure to heat	EN ISO 23999	≤ 2mm
Fire Resistance	EN 13501-1	Bfl-s1
Electrical Properties	EN 1815	≤ 2kV
Resistance Against Staining	EN 26987	Passed
Underfloor Heating Suitability	EN 12524	Compatible (max. 27°C)
Residential Warranty		30 years
Commercial Warranty		15 years
DoP Number		No. 22-KD-001

NB: Compatible with underfloor heating systems - subject to M50 installation advice available on request.

Test results are based upon current test data provided by the manufacturer and are provided in good faith. Domus Group Limited cannot be held responsible for any variation in the test data due to changes in manufacture or material characteristics. Errors & omissions excepted. Please refer to Domus Group Limited Terms & Conditions of Sale, January 2024.



DOMUS

service@domusgroup.com | t: 020 8481 9567 | domusgroup.com