

# Bera & Beren Wall

*Ceramic Design*



Wall: DLBW 03 Six Natural

4 Colours / 3 Patterns / 1 Finish / 1 Size

Bera & Beren Wall takes inspiration from Portuguese and Catalan limestone. The range has a refined, minimal character in a timeless stone coloured palette. The natural tones demonstrate a subtle shade variation with meticulous surface detail.



Wall: DLBW 04 Saw Natural  
Floor: Bera & Beren DLBF 05 Natural



Wall: DLBW 03 Dot Natural



Wall: DLBW 02 Six Natural

# Sizes

---



DLBW 01 Dot



DLBW 02 Dot



DLBW 01 Saw



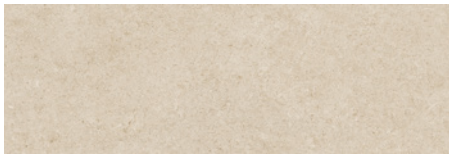
DLBW 02 Saw



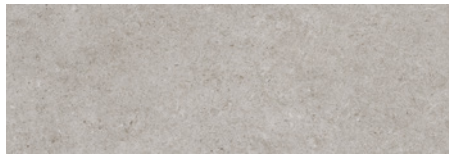
DLBW 01 Six



DLBW 02 Six



DLBW 03 Dot



DLBW 04 Dot



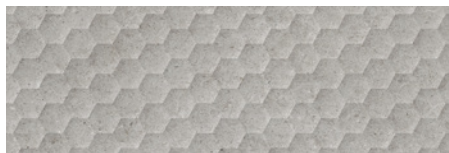
DLBW 03 Saw



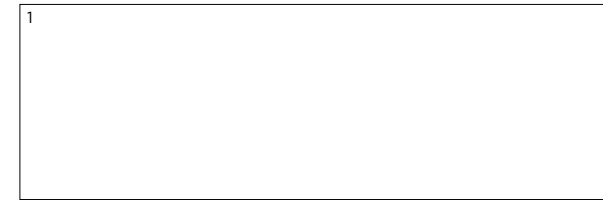
DLBW 04 Saw



DLBW 03 Six

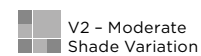


DLBW 04 Six



	Size (mm)	Thickness	Finish	Pattern	Colour Availability
1	898 x 298 (R)	9	Natural	Dot Saw Six	All colours All colours All colours

(R) Rectified size - squared edge with bevel. Suitable for use on internal walls only.  
Swatch colours may vary from original. Samples should be requested.



# Bera & Beren Wall

## Technical Data

**Product Type:** Glazed Ceramic (BS EN 14411 – Group BIII)

**Use:** Walls (Internal only)

**Product Code:** DLBW

### DIMENSION & SURFACE QUALITY

Technical Characteristics	Industry Standards	Requirement	Actual Value
Length & width	BS EN ISO 10545-2	± 0.50% (max. ± 2.0mm)	Conforms
Thickness	BS EN ISO 10545-2	± 10% (max. ± 0.5mm)	Conforms
Edge straightness	BS EN ISO 10545-2	± 0.30% (max. ± 1.5mm)	Conforms
Orthogonality (squareness)	BS EN ISO 10545-2	± 0.50% (max. ± 2.0mm)	Conforms
Planarity (flatness): Centre curvature	BS EN ISO 10545-2	+ 0.5% (max. + 2.0mm) - 0.3% (max. - 1.5mm)	Conforms
Edge curvature	BS EN ISO 10545-2	+ 0.5% (max. + 2.0mm) - 0.3% (max. - 1.5mm)	Conforms
Warpage	BS EN ISO 10545-2	± 0.5% (max. ± 2.0mm)	Conforms
Appearance	BS EN ISO 10545-2	> 95%	Conforms

### PRODUCT QUALITY & DURABILITY

Technical Characteristics	Industry Standards	Requirement	Actual Value
Water absorption	BS EN ISO 10545-3	> 10%	Conforms
Modulus of rupture (bending strength)	BS EN ISO 10545-4	≥ 7.5mm thick ≥ 12 N/mm <sup>2</sup>	> 20 N/mm <sup>2</sup> (typical value)
Breaking strength	BS EN ISO 10545-4	≥ 7.5mm thick ≥ 600 N	> 800 N (typical value)
Crazing resistance	BS EN ISO 10545-11	No visible signs	Resistant
Chemical resistance: Low concentrations of acids & alkalis	BS EN ISO 10545-13	No visible defects	GLA
High concentrations of acids & alkalis	BS EN ISO 10545-13	No visible defects	GHA
Domestic chemicals & additives for swimming pools	BS EN ISO 10545-13	GB min.	GA
Stain resistance	BS EN ISO 10545-14	Min. Class 3	Class 5
Reaction to fire	Based on the decision 96/603/EC and its changes	A1	A1
Recycled content			45%



All test results are based upon current test data provided by the manufacturer and are provided in good faith. Domus Group cannot be held responsible for any variation in the test data due to changes in manufacture or material characteristics. Errors & omissions excepted. Please refer to Domus Group Terms & Conditions of Sale. November 2023

**DOMUS**

service@domusgroup.com | t: 020 8481 9500 | domusgroup.com