

Earthtech Magnum

Lightweight Slabs / Porcelain Terrazzo



Floor: DMAG 205 Comfort PTV

6 Colours / **1** Finish / **4** Sizes / **2** Mosaics / **3** Décors

Earthtech Magnum offers a choice of organic textures thanks to the presence of tiny flecks — a result of spontaneously mixing pre-selected fragments and pigments. It is a full-bodied, terrazzo-effect porcelain range that can be paired with Earthtech and Earthtech 20mm.



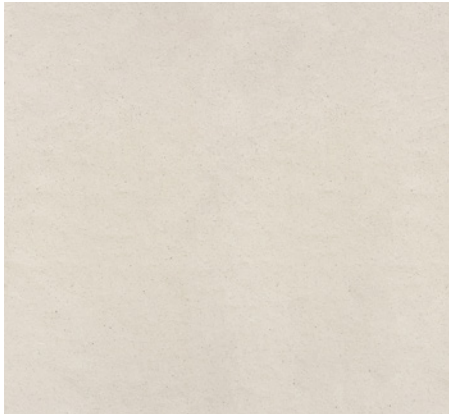
Wall: DMAG 206 Comfort PTV



Wall: DMAG 203 Fronds B Décor Comfort PTV



Wall: DMAG 202 Leaves Décor Comfort PTV



DMAG 202



DMAG 203



DMAG 204



DMAG 205

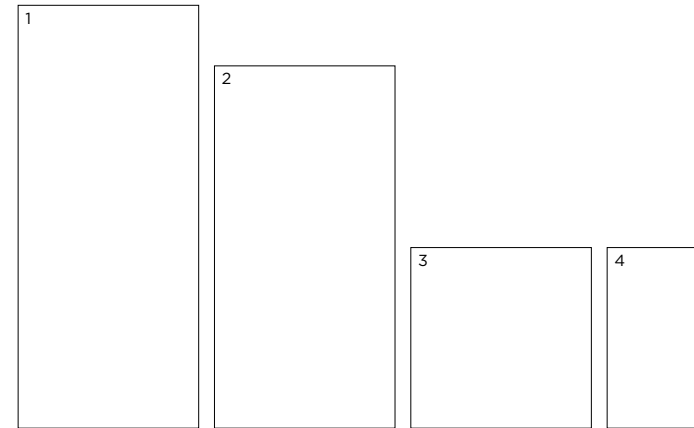


DMAG 206



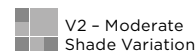
DMAG 207

Sizes



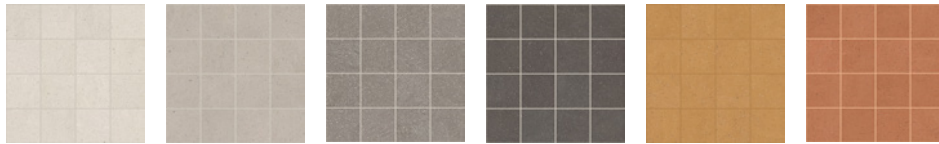
	Size (mm)	Thickness	Finish	Colour Availability
1	2797 x 1197 (R)	6	Comfort PTV	All colours
2	2397 x 1197 (R)	6	Comfort PTV	All colours
3	1197 x 1197 (R)	6	Comfort PTV	All colours
4	1197 x 597 (R)	6	Comfort PTV	All colours
	Skirting 597 x 46 (R)	6	Comfort PTV	All colours

(R) Rectified size - square edge with bevel. Mosaics and décors shown on next page. Swatch colours may vary from original. Samples should be requested.



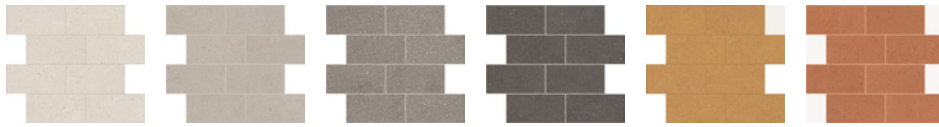
Mosaics & Décors

Mosaic 75 x 75mm



DMAG 202 DMAG 203 DMAG 204 DMAG 205 DMAG 206 DMAG 207

Muretto Mosaic 147 x 75mm



DMAG 202 DMAG 203 DMAG 204 DMAG 205 DMAG 206 DMAG 207

Décors (shown below in 2797 x 1197 x 6mm format)



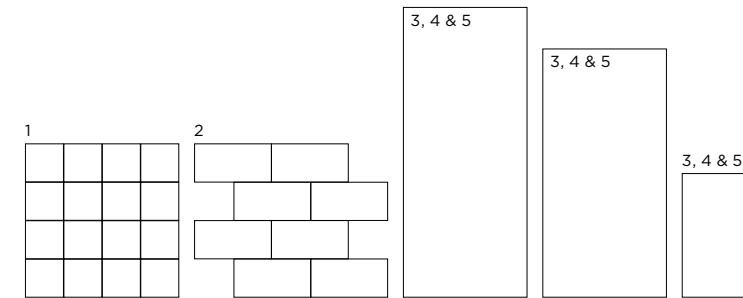
DMAG 205 Fronds A Décor



DMAG 203 Fronds B Décor



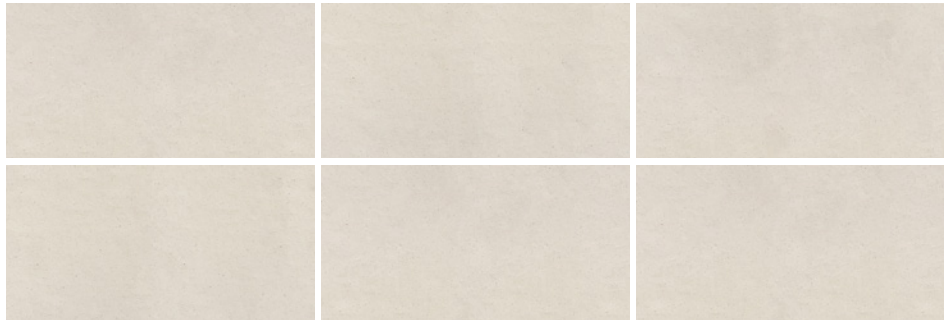
DMAG 202 Leaves Décor



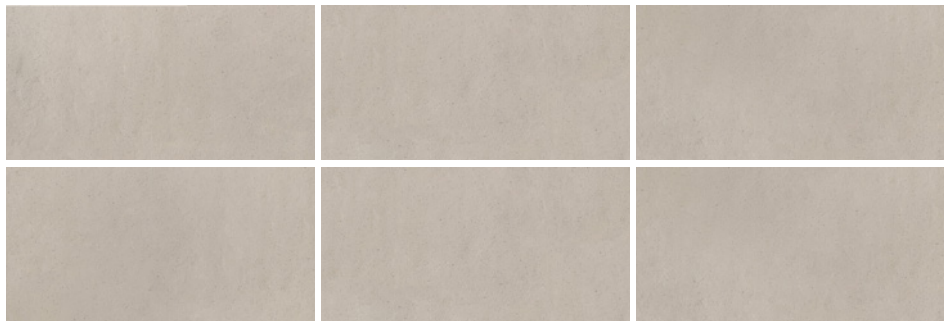
	Size (mm)	Thickness	Finish	Colour Availability
1	Mosaic 75 x 75 on 297 x 297 sheet	6	Comfort PTV	All colours
2	Muretto Mosaic 147 x 75 on 297 x 297 sheet	6	Comfort PTV	All colours
3	Fronds A Décor 2797 x 1197 (R) 2397 x 1197 (R) 1197 x 597 (R)	6	Comfort PTV	DMAG 205 only
4	Fronds B Décor 2797 x 1197 (R) 2397 x 1197 (R) 1197 x 597 (R)	6	Comfort PTV	DMAG 203 only
5	Leaves Décor 2797 x 1197 (R) 2397 x 1197 (R) 1197 x 597 (R)	6	Comfort PTV	DMAG 202 only

(R) Rectified size – square edge with bevel. Swatch colours may vary from original. Samples should be requested. Line drawings not to scale. Fronds A, Fronds B and Leaves Décors are available in other colours, upon special request.

Variations



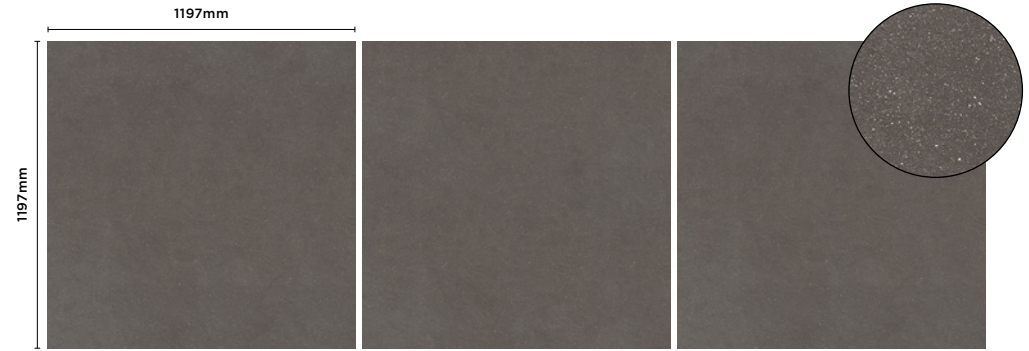
DMAG 202 Comfort PTV



DMAG 203 Comfort PTV



DMAG 204 Comfort PTV



DMAG 205 Comfort PTV



DMAG 206 Comfort PTV



DMAG 207 Comfort PTV

Earthtech Magnum

Technical Data

Product Type: Unglazed Porcelain (BS EN 14411 - Group Bla)

Use: Floors & Walls

Product Code: DMAG

DIMENSION & SURFACE QUALITY

Technical Characteristics	Industry Standards	Requirement	Actual Value
Length & width	BS EN ISO 10545-2	± 0.60% (max. ± 2.0mm)	Conforms
Thickness	BS EN ISO 10545-2	± 5% (max. ± 0.5mm)	Conforms
Edge straightness	BS EN ISO 10545-2	± 0.50% (max. ± 1.5mm)	Conforms
Orthogonality (squareness)	BS EN ISO 10545-2	± 0.50% (max. ± 2.0mm)	Conforms
Planarity (flatness)	BS EN ISO 10545-2	± 0.50% (max. ± 2.0mm)	Conforms
Appearance	BS EN ISO 10545-2	> 95%	Conforms

SLIP RESISTANCE

Technical Characteristics	Industry Standards	Requirement	Finish
Areas with footwear	BS EN ISO 10545-17 (DIN 51130)	R10 from 10° to 19°	Comfort PTV
Areas with bare feet	DIN 51097	B over 18° to 24°	Comfort PTV
Slip resistance Coefficient of friction	BS 7976-2 BS EN 16165	Test results upon request	

PRODUCT QUALITY & DURABILITY

Technical Characteristics	Industry Standards	Requirement	Actual Value
Water absorption	BS EN ISO 10545-3	≤ 0.5%	0.08% (average value)
Modulus of rupture (bending strength)	BS EN ISO 10545-4	≥ 35 N/mm ²	52 N/mm ² (average value)
Breaking strength	BS EN ISO 10545-4	< 7.5mm ≥ 700 N	1350 N (average value)
Resistance to deep abrasion (unglazed tiles)	BS EN ISO 10545-6	≤ 175 mm ³	140 mm ³ (average value)
Thermal shock resistance	BS EN ISO 10545-9	No visible defects	Resistant
Frost resistance	BS EN ISO 10545-12	No surface alteration	Resistant
Chemical resistance: Low concentrations of acids & alkalis	BS EN ISO 10545-13	No visible defects	ULA
Domestic chemicals & additives for swimming pools	BS EN ISO 10545-13	UB min.	UA
Stain resistance	BS EN ISO 10545-14	Declared value	Class 5
Reaction to fire	Based on the decision 96/603/EC and its changes		A1 _{FL} /A1
Recycled content			DMAG 202 - 0% DMAG 203-207 - 20.5%



All test results are based upon current test data provided by the manufacturer and are provided in good faith. Domus Group cannot be held responsible for any variation in the test data due to changes in manufacture or material characteristics. Errors & omissions excepted. Please refer to Domus Group Terms & Conditions of Sale. March 2023