

Kaza Shingle

Concrete 3D



30 Colours / 3 Finishes / 5 Sizes

The form of Kaza Shingle charmingly derives from the fusion of a leaf and a roof shingle. The vertical centre line gives depth and creates an illusion of two different shades. Recommended for use on interior and exterior walls.

Design Patrycja Domanska & Tanja Lightfoot





Wall: DKCN 06 Glossy



Wall: DKCN 01, 26, 36 & 37 Matt



DKCN 54 DKCN 01 DKCN 02 DKCN 29 DKCN 03



DKCN 52 DKCN 51 DKCN 36 DKCN 53 DKCN 37



DKCN 30 DKCN 31 DKCN 35 DKCN 33 DKCN 17



DKCN 38 DKCN 22 DKCN 34 DKCN 39 DKCN 40

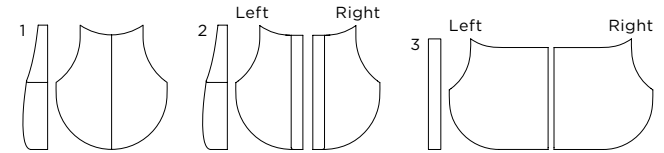


DKCN 32 DKCN 27 DKCN 26 DKCN 56 DKCN 28



DKCN 04 DKCN 05 DKCN 55 DKCN 06 DKCN 14

Sizes



	Size (mm)	Thickness	Finish	Colour Availability
1	180 x 160	37	Matt Glossy Metallic	DKCN 01-06, 14, 17, 22, 26-40 DKCN 01-06, 14, 17, 22, 26-40 DKCN 51, 52, 53, 54, 55 & 56
2	Left 180 x 94	37	Matt Glossy Metallic	DKCN 01-06, 14, 17, 22, 26-40 DKCN 01-06, 14, 17, 22, 26-40 DKCN 51, 52, 53, 54, 55 & 56
3	Right 180 x 94	37	Matt Glossy Metallic	DKCN 01-06, 14, 17, 22, 26-40 DKCN 01-06, 14, 17, 22, 26-40 DKCN 51, 52, 53, 54, 55 & 56
4	Left 177 x 160	19	Matt Glossy Metallic	DKCN 01-06, 14, 17, 22, 26-40 DKCN 01-06, 14, 17, 22, 26-40 DKCN 51, 52, 53, 54, 55 & 56
5	Right 177 x 160	19	Matt Glossy Metallic	DKCN 01-06, 14, 17, 22, 26-40 DKCN 01-06, 14, 17, 22, 26-40 DKCN 51, 52, 53, 54, 55 & 56

Swatch colours may vary from original. Samples should be requested.
Recommended for use on walls only.



Kaza Shingle

Technical Data

Product Type: Concrete Tile

Use: Internal & External Walls (External panels are pre-sealed)

Product Code: DKCN

DIMENSION & SURFACE QUALITY

Technical Characteristics	Industry Standards	Actual Value
Thickness	BS EN ISO 14617-16 (2005)	± 10%
Size Accuracy	BS EN ISO 14617 -16 (2005)	± 0.5%
Surface Quality	BS EN ISO 14617 -16 (2005)	Conforms

Technical Characteristics	Industry Standards	Actual Value
Water absorption	BS EN ISO 15285:2008	W1
Freeze/Thaw Resistance	BS EN ISO 14617-5 (2012)	97%
Thermal Shock Resistance	BS EN ISO 14617-6 (2016)	92%
Impact resistance	BS EN ISO 14617-9 (2005)	5J
Flexural Strength	BS EN ISO 15285:2008	F1
Reaction to fire	BS EN ISO 15285:2008	A1
Recycled content		Maximum 30%



All test results are based upon current test data provided by the manufacturer and are provided in good faith. Domus Group cannot be held responsible for any variation in the test data due to changes in manufacture or material characteristics. Errors & omissions excepted. Please refer to Domus Group Terms & Conditions of Sale.
June 2023

DOMUS

service@domusgroup.com | t: 020 8481 9500 | domusgroup.com