

Cromie 22mm

Technical Stone



20 Colours / 2 Finishes / 11 Sizes

Cromie 22mm is an eco-friendly exterior tile range comprised of natural recycled materials. The by-products from Italy's quarries are 'cold-pressed' into tiles, producing a textured, low-embodied energy material—unsealed and frost-proof, offering high slip resistance. View Cromie 15mm for sealed tiles for indoor use.

Compact Finish



DRSCO 07



DRSCO 04



DRSCO 05



DRSCO 06



DRSCO 09



DRSCO 10



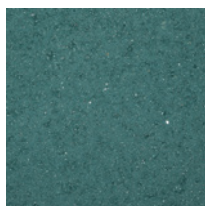
DRSCO 11



DRSCO 12



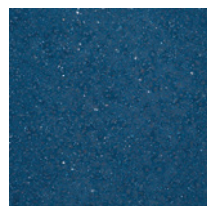
DRSCO 19



DRSCO 17



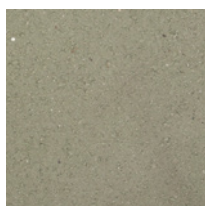
DRSCO 18



DRSCO 20



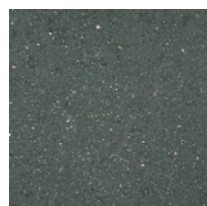
DRSCO 13



DRSCO 15



DRSCO 14



DRSCO 16



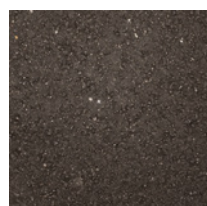
DRSCO 01



DRSCO 02

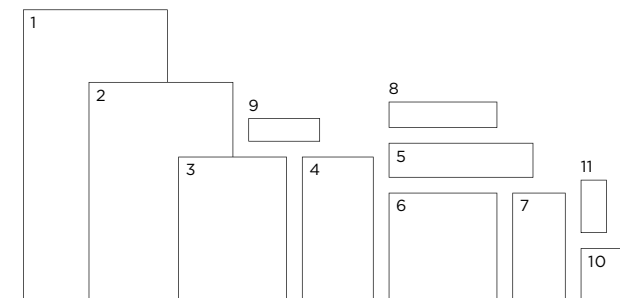


DRSCO 08



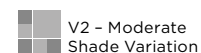
DRSCO 03

Sizes



	Size (mm)	Thickness	Finish	Colour Availability
1	672 x 333 (N)	22	Compact Consolare	All colours All colours
2	505 x 333 (N)	22	Compact Consolare	All colours All colours
3	333 x 250 (N)	22	Compact Consolare	All colours All colours
4	333 x 165 (N)	22	Compact Consolare	All colours All colours
5	333 x 80 (N)	22	Compact Consolare	All colours All colours
6	250 x 250 (N)	22	Compact Consolare	All colours All colours
7	250 x 122.5 (N)	22	Compact Consolare	All colours All colours
8	250 x 60 (N)	22	Compact Consolare	All colours All colours
9	165 x 54 (N)	22	Compact Consolare	All colours All colours
10	122.5 x 122.5 (N)	22	Compact Consolare	All colours All colours
11	122.5 x 60 (N)	22	Compact Consolare	All colours All colours

(N) Nominal size - pressed edge. Swatch colours may vary from original. Samples should be requested. This is an unsealed product suitable for use on outdoor floors.

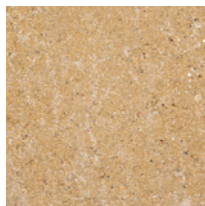


DOMUS

Consolare Finish



DRSCO 07



DRSCO 04



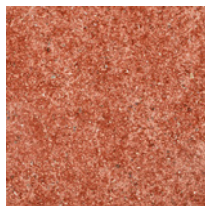
DRSCO 05



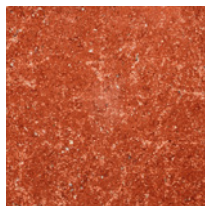
DRSCO 06



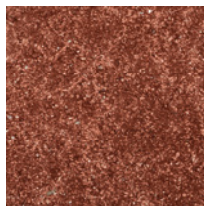
DRSCO 09



DRSCO 10



DRSCO 11



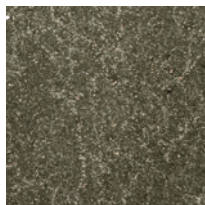
DRSCO 12



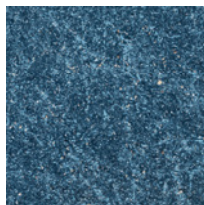
DRSCO 19



DRSCO 17



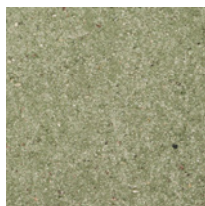
DRSCO 18



DRSCO 20



DRSCO 13



DRSCO 15



DRSCO 14



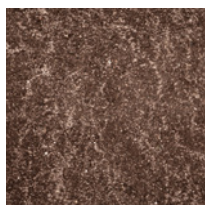
DRSCO 16



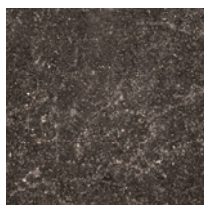
DRSCO 01



DRSCO 02



DRSCO 08



DRSCO 03

Special Pieces

	Size (mm)	Thickness	Finish	Colour Availability
1	Step Tread Toro 333 x 250 (N)	30	Compact Consolare	All colours All colours
2	Step Tread Becco 333 x 250 (N)	22	Compact Consolare	All colours All colours
3	Skirting 250 x 122.5 (N)	15	Compact Consolare	All colours All colours

(N) Nominal size - pressed edge.

V2 - Moderate
Shade Variation

DOMUS

service@domusgroup.com | t: 020 8481 9500 | domusgroup.com

Cromie 22mm

Technical Data

Product Type: Reconstituted Stone (unsealed)

Use: Internal & External Floors

Product Code: DRSCO

Finishes: Compact – smooth surface, even edges

Consolare – aged surface, aged edges

DIMENSION & SURFACE QUALITY

THIS IS AN ARTISANAL, HANDMADE / HAND-FINISHED PRODUCT
IRREGULAR EDGES, VARIATION IN TONE, THICKNESS, SIZE / PLANARITY
(FLATNESS) ARE CHARACTERISTICS OF THIS MATERIAL
DIMENSIONS CAN VARY BY ± 1 mm FROM THE NOMINAL SIZE.

SLIP RESISTANCE

Technical Characteristics	Industry Standards	Requirement	Finish
Areas with footwear	DIN 51130	R13 over 35°	Unsealed (22mm)
Slip resistance Coefficient of friction	BS 7976-2 / BS EN 16165 Test results upon request		

PRODUCT QUALITY & DURABILITY

Technical Characteristics	Industry Standards	Unit of Measure	Actual Value
Impact Strength	RD n 2234	Kg/cm ²	0.34 (typical value)
Resistance to abrasion	EN 202	mm ²	705
Flexural strength	UN EN 100	Kg/cm ²	Side 12.5 = 119 kg/cm ² Side 25 = 88 kg/cm ²
Resistance to frost	UNI EN 202	Declared Value	Resistant
Compressive strength	UNI EN 202	Kg/m ²	744 - 1282
Resistance to salt			Resistant
Reaction to fire	Based on the decision 96/603/EC and its changes		A1 _{FL} /A1
Recycled content			60%

