

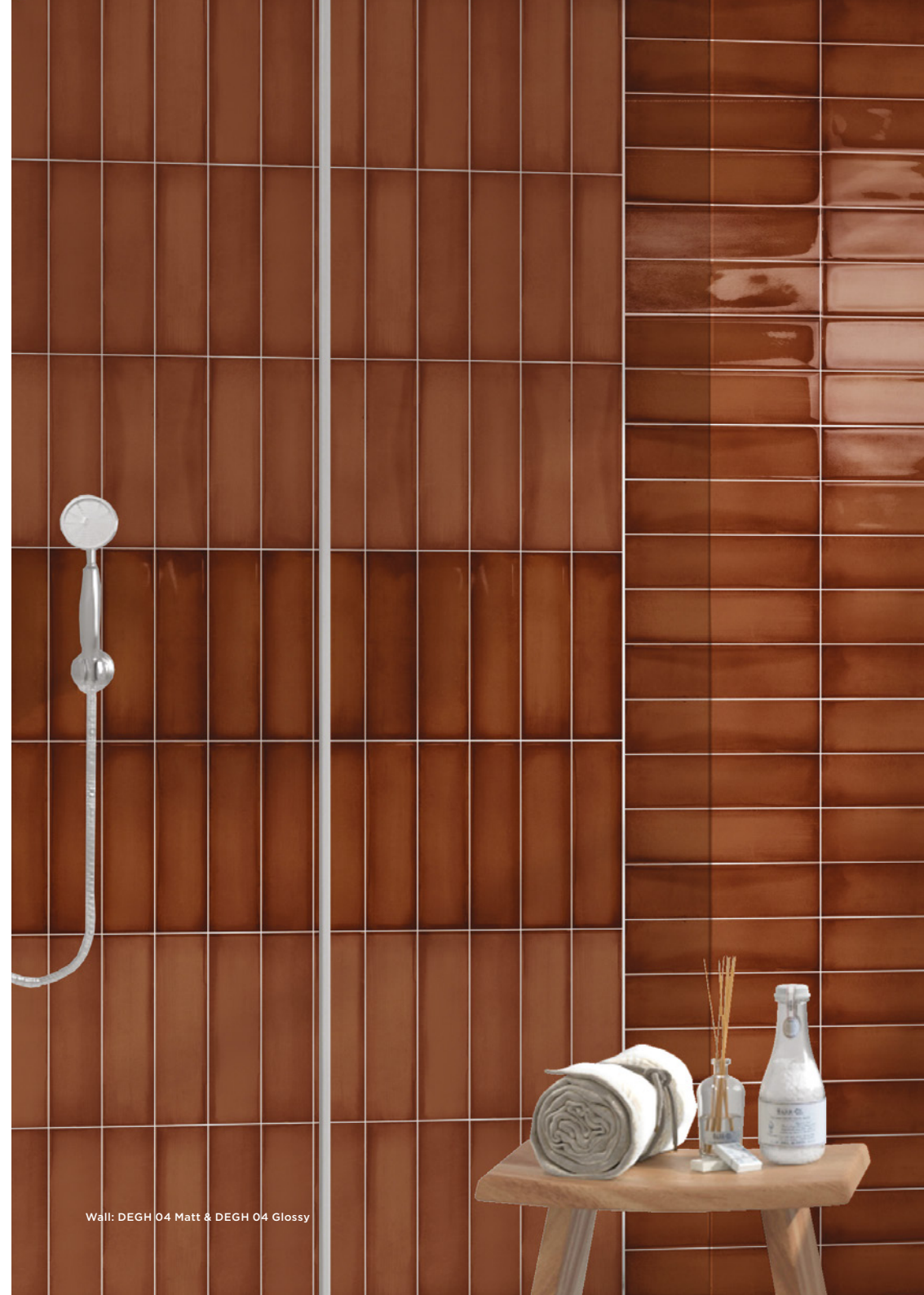
Ghent

Ceramic Colours



6 Colours / 2 Finishes / 1 Size

Consisting of contemporary Nordic-inspired aesthetics and a palette of colours with industrial nuances, Ghent is a ceramic wall tile range that allows you to create unique rooms with multiple combinations of layouts. These tiles are a perfect option to produce sophisticated rooms that project serenity.





Counter: DEGH 02 Matt & DEGH 02 Glossy



Wall: DEGH 06 Matt & DEGH 06 Glossy

Sizes



DEGH 01 Matt



DEGH 01 Glossy



DEGH 02 Matt



DEGH 02 Glossy



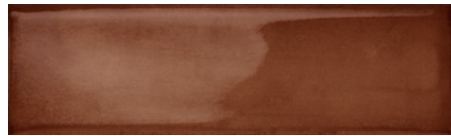
DEGH 03 Matt



DEGH 03 Glossy



DEGH 04 Matt



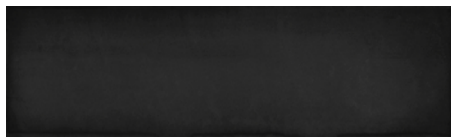
DEGH 04 Glossy



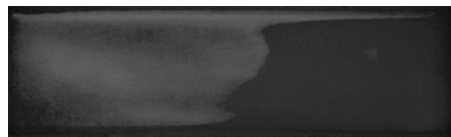
DEGH 05 Matt



DEGH 05 Glossy



DEGH 06 Matt

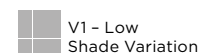


DEGH 06 Glossy



	Size (mm)	Thickness	Finish	Colour Availability
1	240 x 69 (N)	9	Matt Glossy	All colours All colours

(N) Nominal size - pressed edge. Swatch colours may vary from original. Samples should be requested. For wall use only.



Ghent

Technical Data

Product Type: Glazed Ceramic (BS EN 14411 – Group BIII)

Use: Walls (Internal only)

Product Code: DEGH

DIMENSION & SURFACE QUALITY

Technical Characteristics	Industry Standards	Requirement (for nominal size <i>N</i>)		Actual Value
		70mm ≤ <i>N</i> < 150mm	<i>N</i> ≥ 150mm	
Length & width	BS EN ISO 10545-2	± 0.75mm	± 0.50% (max. ± 2.0mm)	Conforms
Thickness	BS EN ISO 10545-2	± 0.5mm	± 10% (max. ± 0.5mm)	Conforms
Orthogonality (squareness)	BS EN ISO 10545-2	± 0.75mm	± 0.50% (max. ± 2.0mm)	Conforms
Planarity (flatness)	BS EN ISO 10545-2	+ 0.75mm - 0.5mm	+ 0.5% (max. + 2.0mm) - 0.3% (max. - 1.5mm)	Conforms
Appearance	BS EN ISO 10545-2	> 95%		Conforms

PRODUCT QUALITY & DURABILITY

Technical Characteristics	Industry Standards	Requirement	Actual Value
Water absorption	BS EN ISO 10545-3	> 10%	Conforms
Modulus of rupture (bending strength)	BS EN ISO 10545-4	≥ 7.5mm thick ≥ 12 N/mm ²	Conforms
Breaking strength	BS EN ISO 10545-4	≥ 7.5mm thick ≥ 600 N	Conforms
Crazing resistance	BS EN ISO 10545-11	No visible signs	Resistant
Chemical resistance: Domestic chemicals & additives for swimming pools	BS EN ISO 10545-13	GB min.	GA
Stain resistance	BS EN ISO 10545-14	Min. Class 3	Class 4
Reaction to fire	Based on the decision 96/603/EC and its changes	A1	A1
Recycled content			61%

All test results are based upon current test data provided by the manufacturer and are provided in good faith. Domus Group cannot be held responsible for any variation in the test data due to changes in manufacture or material characteristics. Errors & omissions excepted. Please refer to Domus Group Terms & Conditions of Sale. June 2023



DOMUS

service@domusgroup.com | t: 020 8481 9500 | domusgroup.com