

Barna

Porcelain Minimal



Floor: DAGY 03 Matt

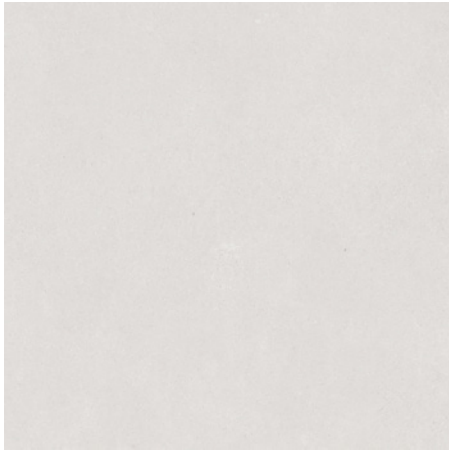
4 Colours / **1** Finish / **3** Sizes

Barna results from great design, beauty and functionality—the industrial, urban style creates clean, minimalist spaces. It adapts to interiors and exteriors and makes it possible to create continuous, functional areas when paired with its ceramic counterpart, Barna Wall.

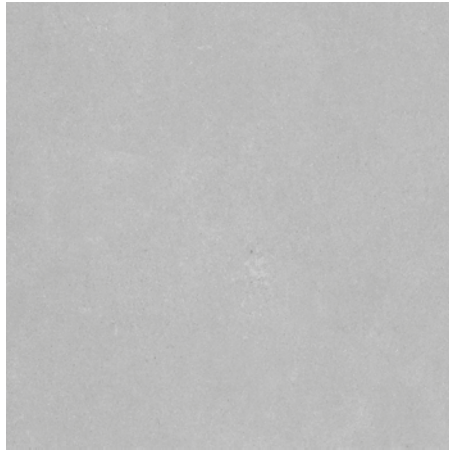


Floor: DAGY 02 Matt

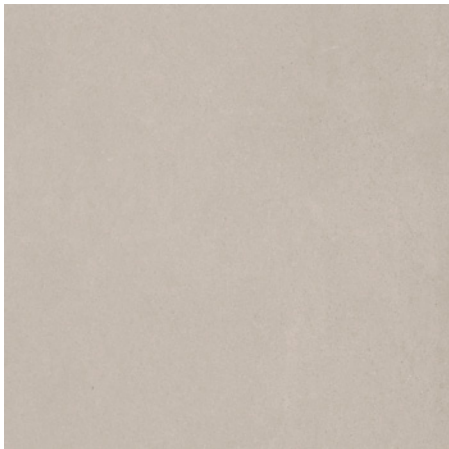
Sizes



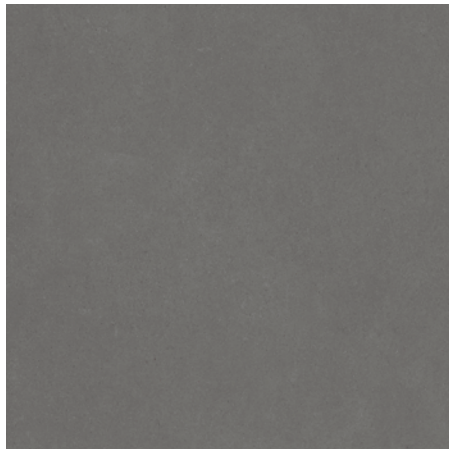
DAGY 01



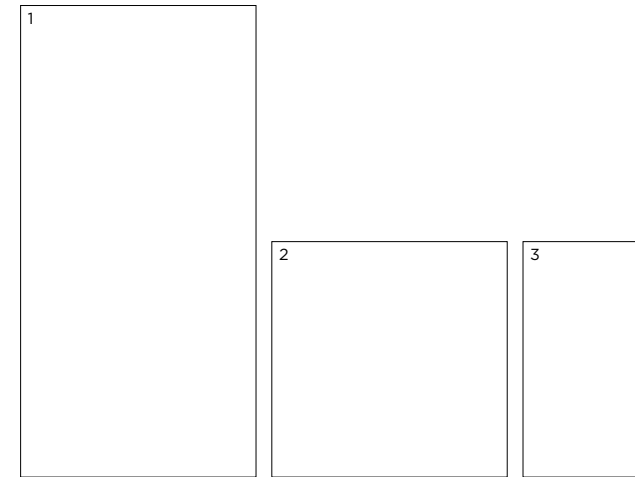
DAGY 02



DAGY 03



DAGY 04



	Size (mm)	Thickness	Finish	Colour Availability
1	1200 x 600 (R)	9	Matt	All colours
2	600 x 600 (R)	9	Matt	All colours
3	600 x 298 (R)	9	Matt	All colours

(R) Rectified size - square edge with bevel. Swatch colours may vary from original. Samples should be requested. Special pieces shown on next page.

Special Pieces



Floor: DAGY 02 Matt

	Size (mm)	Thickness	Finish	Colour Availability
1	Skirting 1200 x 90	9	Matt	All colours
2	Skirting 600 x 90	9	Matt	All colours
3	Bullnose Step Tread 1200 x 300	9	Matt	All colours

Swatch colours may vary from original. Samples should be requested.

Barna

Technical Data

Product Type: Glazed Porcelain (BS EN 14411 – Group BIa)

Use: Floors & Walls

Product Code: DAGY

DIMENSION & SURFACE QUALITY

Technical Characteristics	Industry Standards	Requirement	Actual Value
Length & width	BS EN ISO 10545-2	± 0.60% (max. ± 2.0mm)	Conforms
Thickness	BS EN ISO 10545-2	± 5% (max. ± 0.5mm)	Conforms
Edge straightness	BS EN ISO 10545-2	± 0.50% (max. ± 1.5mm)	Conforms
Orthogonality (squareness)	BS EN ISO 10545-2	± 0.50% max. ± 2.0mm)	Conforms
Planarity (flatness)	BS EN ISO 10545-2	± 0.50% (max. ± 2.0mm)	Conforms
Appearance	BS EN ISO 10545-2	> 95%	Conforms

SLIP RESISTANCE

Technical Characteristics	Industry Standards	Requirement	Finish
Areas with footwear	BS EN ISO 10545-17 (DIN 51130)	R11 from 19° to 27°	Matt
Slip resistance (Pendulum) Coefficient of friction	BS EN 16165	Test results upon request	

PRODUCT QUALITY & DURABILITY

Technical Characteristics	Industry Standards	Requirement	Actual Value
Water absorption	BS EN ISO 10545-3	≤ 0.5%	Conforms
Modulus of rupture (bending strength)	BS EN ISO 10545-4	≥ 35 N/mm ²	Conforms
Breaking strength	BS EN ISO 10545-4	≥ 7.5mm ≥ 1300 N	Conforms
Resistance to surface abrasion (glazed tiles)	BS EN ISO 10545-7	PEI *see classifications below	Class 2 – DAGY 04 Class 3 – DAGY 03 Class 4 – DAGY 01 & 02
Linear thermal expansion coefficient	BS EN ISO 10545-8	Declared value	< 9x10 ⁻⁶ /°C (Typical value)
Thermal shock resistance	BS EN ISO 10545-9	No visible defects	Resistant
Crazing resistance	BS EN ISO 10545-11	No visible signs	Resistant
Frost resistance	BS EN ISO 10545-12	No surface alteration	Resistant
Chemical resistance: Low concentrations of acids & alkalis	BS EN ISO 10545-13	Minimum LB	Conforms
High concentrations of acids & alkalis	BS EN ISO 10545-13	Minimum HB	Conforms
Domestic chemicals & additives for swimming pools	BS EN ISO 10545-13	UB/GB min.	Conforms
Stain resistance	BS EN ISO 10545-14	Min. Class 3 – glazed	Resistant
Reaction to fire	Based on the decision 96/603/EC and its changes	A1 _{FL} /A1	A1 _{FL} /A1
Recycled content			16%

***PEI classifications**
 PEI 1 - Very light traffic
 PEI 2 - Light traffic
 PEI 3 - Light to moderate traffic
 PEI 4 - Moderate to heavy traffic
 PEI 5 - Heavy to extra heavy traffic

