

# Azulej

Porcelain Design



Wall: DTAJ 03 Trama Glazed  
Floor: DTAJ 03 Trevo & Estrela Glazed

3 Colours / 10 Patterns / 1 Finish / 1 Size / 1 Décor

Azulej is a patterned porcelain tile range which draws inspiration from traditional encaustic Victorian floor tiles. Using the latest inkjet technology, designs are printed onto a durable, stain-resistant surface. The diverse palette and patterns combine to create a beautiful, striking range.

Design Patricia Urquiola

**Mutina**



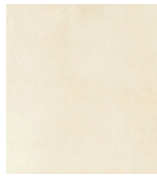
Wall: DTAJ 02 Gira Glazed



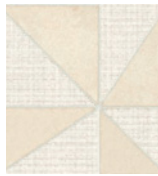
Wall: DTAJ 02 Flores & Estrela Glazed



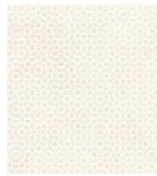
Floor: DTAJ 01 Diagonal Glazed



DTAJ 01 Plain



Gira



Renda



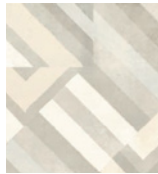
Trevo



Trama



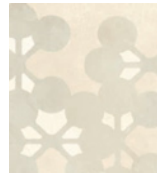
Cubo



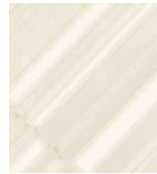
Prata



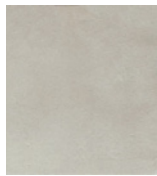
Estrela



Flores



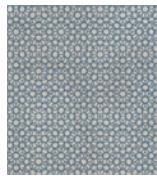
Diagonal



DTAJ 02 Plain



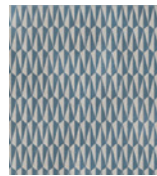
Gira



Renda



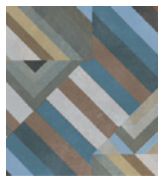
Trevo



Trama



Cubo



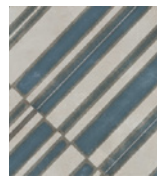
Prata



Estrela



Flores



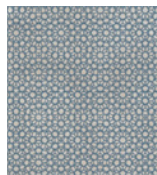
Diagonal



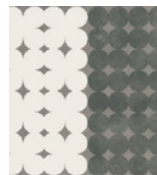
DTAJ 03 Plain



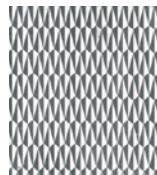
Gira



Renda



Trevo



Trama



Cubo



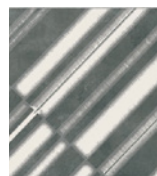
Prata



Estrela

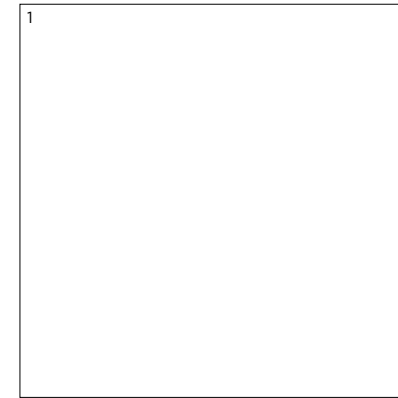


Flores



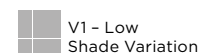
Diagonal

# Sizes



	Size (mm)	Thickness	Pattern	Colour Availability
1	196.3 x 196.3 (R)	10	Plain Gira Renda Trevo Trama Cubo Prata Estrela Flores Diagonal	All colours
	Plinth Skirting 200 x 47 (R)			

(R) Rectified size - square edge with bevel. Ten different surface patterns in a Glazed finish. Swatch colours may vary from original. Samples should be requested. Décors (combination tiles) shown on next page.



# Décors

Combination (mix of 27 different patterns)



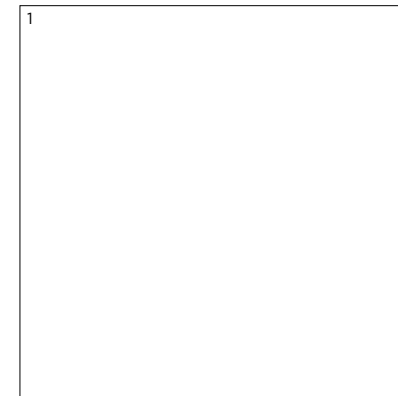
DTAJ 01



DTAJ 02



DTAJ 03



	Size (mm)	Thickness	Finish	Colour Availability
1	Combination (mix of 27 different patterns) 196.3 x 196.3 (R)	10	Glazed	All colours

(R) Rectified size - square edge with bevel. Swatch colours may vary from original. Samples should be requested.

# Azulej

## Technical Data

**Product Type:** Glazed Porcelain (BS EN 14411 – Group Bla)

**Use:** Floors & Walls

**Product Code:** DTAJ

### DIMENSION & SURFACE QUALITY

Technical Characteristics	Industry Standards	Requirement	Actual Value
Length & width	BS EN ISO 10545-2	± 0.60% (max. ± 2.0mm)	Conforms
Thickness	BS EN ISO 10545-2	± 5% (max. ± 0.5mm)	Conforms
Edge straightness	BS EN ISO 10545-2	± 0.50% (max. ± 1.5mm)	Conforms
Orthogonality (squareness)	BS EN ISO 10545-2	± 0.50% (max. ± 2.0mm)	Conforms
Planarity (flatness)	BS EN ISO 10545-2	± 0.50% (max. ± 2.0mm)	Conforms
Appearance	BS EN ISO 10545-2	> 95%	Conforms

### SLIP RESISTANCE

Technical Characteristics	Industry Standards	Requirement	Finish
Areas with footwear	BS EN ISO 10545-17 (DIN 51130)	R9 from 3° to 10°	Glazed Finish
Slip resistance Coefficient of friction	BS 7976-2 BS EN 16165	Test results upon request	

### PRODUCT QUALITY & DURABILITY

Technical Characteristics	Industry Standards	Requirement	Actual Value
Water absorption	BS EN ISO 10545-3	≤ 0.5%	0.07% (Typical value)
Modulus of rupture (bending strength)	BS EN ISO 10545-4	≥ 35 N/mm <sup>2</sup>	Conforms
Breaking strength	BS EN ISO 10545-4	≥ 1300 N	Conforms
Resistance to deep abrasion	BS EN ISO 10545-6	PEI 1-5	DTAJ 01 & 02 - PEI 4* DTAJ 03 - PEI 3*
Thermal shock resistance	BS EN ISO 10545-9	No visible defects	Resistant
Crazing resistance	BS EN ISO 10545-11	No visible signs	Resistant
Frost resistance	BS EN ISO 10545-12	No surface alteration	Resistant
Chemical resistance: Low concentrations of acids & alkalis	BS EN ISO 10545-13	No visible defects	GLA
High concentrations of acids & alkalis	BS EN ISO 10545-13	No visible defects	GHA
Domestic chemicals & additives for swimming pools	BS EN ISO 10545-13	GB Min.	GA
Stain resistance	BS EN ISO 10545-14	Min Class 3	Class 5
Reaction to fire	Based on the decision 96/603/EC and its changes	A1 <sub>FL</sub> /A1	A1 <sub>FL</sub> /A1
Recycled content			8.6% - DTAJ 01 15.8% - DTAJ 02 & 03

#### \*PEI classifications

- PEI 1 - Very light traffic
- PEI 2 - Light traffic
- PEI 3 - Light to moderate traffic
- PEI 4 - Moderate to heavy traffic
- PEI 5 - Heavy to extra heavy traffic



All test results are based upon current test data provided by the manufacturer and are provided in good faith. Domus Group cannot be held responsible for any variation in the test data due to changes in manufacture or material characteristics. Errors & omissions excepted. Please refer to Domus Group Terms & Conditions of Sale. January 2023

**DOMUS**

service@domusgroup.com | t: 020 8481 9500 | domusgroup.com