

Build 2.0 Pure

Porcelain Minimal



Floor: DFBDP 06 Natural

4 Colours / 1 Finish / 3 Sizes / 3 Mosaics

Build 2.0 Pure is a high-tech porcelain range that offers a smart surface solution in a neutral colour palette. Offers a fine grain minimal look which is clean and contemporary. Can be paired with Build 2.0 Bold Magnum, Build 2.0 Cement, Build 2.0 Cement Magnum and Build 2.0 Mineral.



Floor: DFBDP 05 Natural

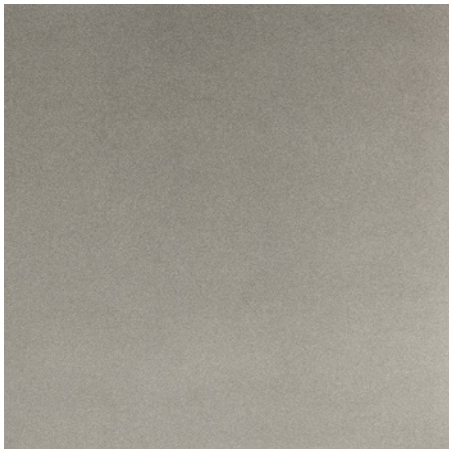
Sizes



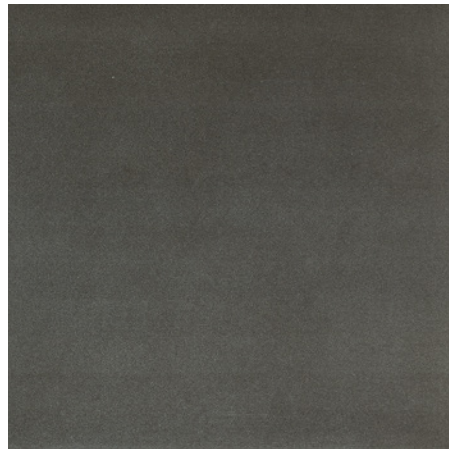
DFBDP 01



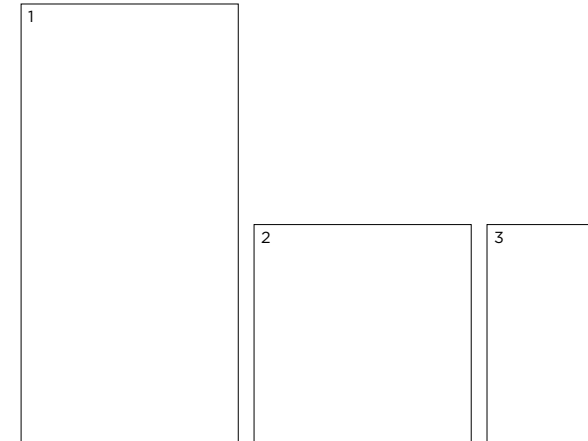
DFBDP 02



DFBDP 05



DFBDP 06



	Size (mm)	Thickness	Finish	Colour Availability
1	1197 x 597 (R)	9	Natural	All colours
2	597 x 597 (R)	9	Natural	All colours
3	597 x 297 (R)	9	Natural	All colours

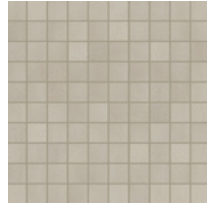
(R) Rectified size - square edge with bevel. Swatch colours may vary from original. Samples should be requested. Mosaics and special pieces shown on next page.

Mosaics & Special Pieces

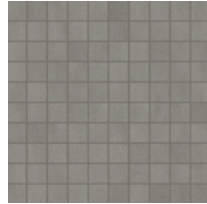
Mosaic



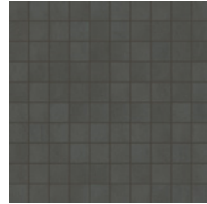
DFBDP 01



DFBDP 02



DFBDP 05



DFBDP 06

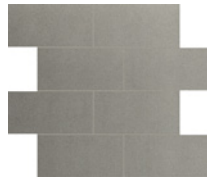
Mattoncino Mosaic



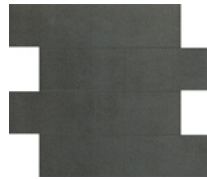
DFBDP 01



DFBDP 02



DFBDP 05



DFBDP 06

Listello Sfalsato



DFBDP 01



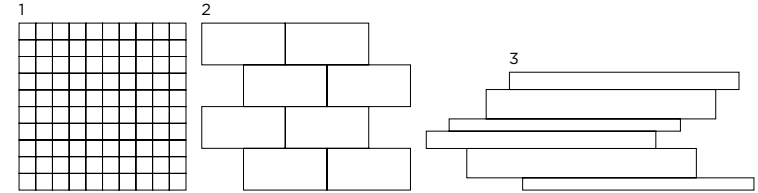
DFBDP 02



DFBDP 05



DFBDP 06



	Size (mm)	Thickness	Finish	Colour Availability
1	Mosaic 30 x 30 on 297 x 297 sheet	9	Natural	All colours
2	Mattoncino Mosaic 150 x 75 on 297 x 297 sheet	9	Natural	All colours
3	Listello Sfalsato on 400 x 210 sheet	9	Natural	All colours
	Plinth Skirting 600 x 46	9	Natural	All colours
	Bullnose Step Tread 1200 x 330 x 30	9	Natural	All colours
	Angle Step Tread DX 1200 x 330 x 30	9	Natural	All colours
	Angle Step Tread SX 1200 x 330 x 30	9	Natural	All colours

Swatch colours may vary from original. Samples should be requested.

Build 2.0 Pure

Technical Data

Product Type: Unglazed Porcelain (BS EN 14411 – Group BIa)

Use: Floors & Walls

Product Code: DFBDP

DIMENSION & SURFACE QUALITY

Technical Characteristics	Industry Standards	Requirement	Actual Value
Length & width	BS EN ISO 10545-2	± 0.60% (max. ± 2.0mm)	± 0.15%
Thickness	BS EN ISO 10545-2	± 5% (max. ± 0.5mm)	± 5%
Edge straightness	BS EN ISO 10545-2	± 0.50% (max. ± 1.5mm)	± 0.1%
Orthogonality (squareness)	BS EN ISO 10545-2	± 0.50% (max. ± 2.0mm)	± 0.2%
Planarity (flatness)	BS EN ISO 10545-2	± 0.50% (max. ± 2.0mm)	± 0.35%
Appearance	BS EN ISO 10545-2	> 95%	Conforms

SLIP RESISTANCE

Technical Characteristics	Industry Standards	Requirement	Finish
Areas with footwear	BS EN ISO 10545-17 (DIN 51130)	R10 from 10° to 19° R11 from 19° to 27°	Natural Slate-Hammered
Areas with bare feet	DIN 51097	B over 18° to 24° C over 24°	Natural Slate-Hammered
Slip resistance Coefficient of friction	BS 7976-2 BS EN 16165	Test results upon request	

PRODUCT QUALITY & DURABILITY

Technical Characteristics	Industry Standards	Requirement	Actual Value
Water absorption	BS EN ISO 10545-3	≤ 0.5%	0.08% (average value)
Modulus of rupture (bending strength)	BS EN ISO 10545-4	≥ 35 N/mm ²	50 N/mm ² (average value)
Breaking strength	BS EN ISO 10545-4	≥ 1300N	3200 N (average value)
Resistance to deep abrasion (unglazed tiles)	BS EN ISO 10545-6	≤ 175 mm ³	140 mm ³ (average value)
Thermal shock resistance	BS EN ISO 10545-9	No visible defects	Resistant
Frost resistance	BS EN ISO 10545-12	No surface alteration	Resistant
Chemical resistance: Low concentrations of acids & alkalis	BS EN ISO 10545-13	No visible defects	ULA - Natural & Slate-Hammered ULB - Polished
High concentrations of acids & alkalis	BS EN ISO 10545-13	No visible defects	UHA - Natural & Slate-Hammered UHB - Polished
Domestic chemicals & additives for swimming pools	BS EN ISO 10545-13	UB min.	UA
Stain resistance	BS EN ISO 10545-14	Declared value	Class 3 – Polished Class 4 – Slate-Hammered Class 4-5 – Natural
Reaction to fire	Based on the decision 96/603/EC and its changes	A1 _{FL} /A1	A1 _{FL} /A1
Recycled content			20.5%



All test results are based upon current test data provided by the manufacturer and are provided in good faith. Domus Group cannot be held responsible for any variation in the test data due to changes in manufacture or material characteristics. Errors & omissions excepted. Please refer to Domus Group Terms & Conditions of Sale. March 2023

DOMUS

service@domusgroup.com | t: 020 8481 9500 | domusgroup.com