

Narvik

Porcelain Stone



6 Colours / 1 Finish / 5 Sizes

Narvik is inspired by eroded rock fragments fused by the power of nature. With its large-grain surface design, this full-character porcelain tile range provides a solid natural aesthetic and a practical solution for high-traffic projects. Available in classic neutral tones in sizes up to 1200mm.





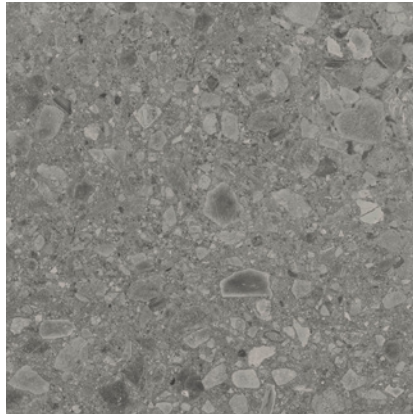
Wall & Floor: DAFN 06 Natural Grip



Wall & Floor: DAFN 03 Natural Grip



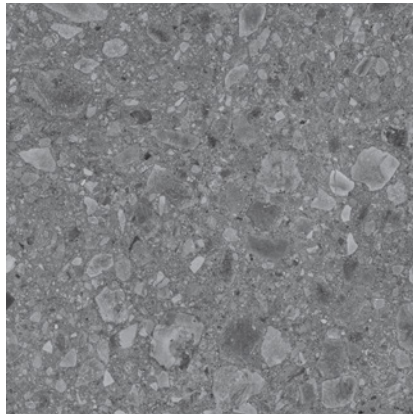
DAFN 06



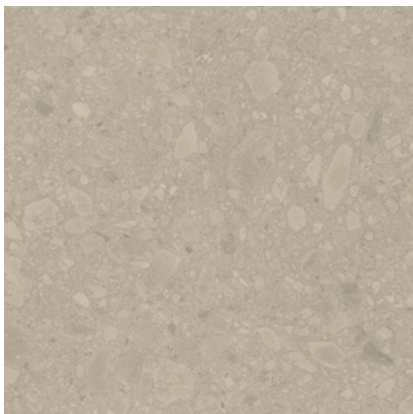
DAFN 03



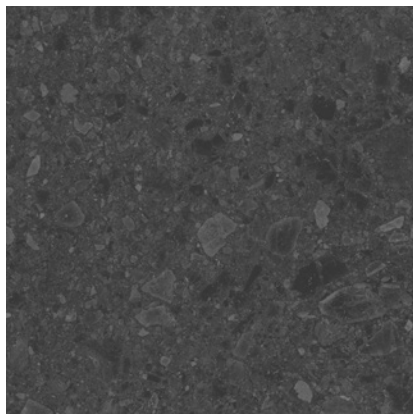
DAFN 01



DAFN 04

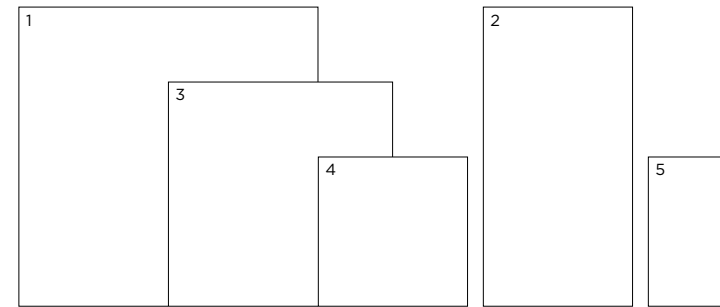


DAFN 02



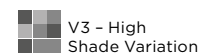
DAFN 05

Sizes



| | Size (mm) | Thickness | Finish | Colour Availability |
|---|-----------------|-----------|--------------|---------------------|
| 1 | 1200 x 1200 (R) | 9 | Natural Grip | All colours |
| 2 | 1200 x 600 (R) | 9 | Natural Grip | All colours |
| 3 | 900 x 900 (R) | 9 | Natural Grip | All colours |
| 4 | 600 x 600 (R) | 9 | Natural Grip | All colours |
| 5 | 600 x 298 (R) | 9 | Natural Grip | All colours |

(R) Rectified size - square edge with bevel.
 Swatch colours may vary from original. Samples should be requested.



Narvik

Technical Data

Product Type: Unglazed Porcelain (BS EN 14411 – Group Bla)

Use: Floors & Walls

Product Code: DAFN

DIMENSION & SURFACE QUALITY

| Technical Characteristics | Industry Standards | Requirement | Actual Value |
|----------------------------|--------------------|------------------------|--------------|
| Length & width | BS EN ISO 10545-2 | ± 0.60% (max. ± 2.0mm) | Conforms |
| Thickness | BS EN ISO 10545-2 | ± 5% (max. ± 0.5mm) | Conforms |
| Edge straightness | BS EN ISO 10545-2 | ± 0.50% (max. ± 1.5mm) | Conforms |
| Orthogonality (squareness) | BS EN ISO 10545-2 | ± 0.50% (max. ± 2.0mm) | Conforms |
| Planarity (flatness) | BS EN ISO 10545-2 | ± 0.50% (max. ± 2.0mm) | Conforms |
| Appearance | BS EN ISO 10545-2 | > 95% | Conforms |

SLIP RESISTANCE

| Technical Characteristics | Industry Standards | Requirement | Finish |
|--|--------------------------------|---------------------------|--------------|
| Areas with footwear | BS EN ISO 10545-17 (DIN 51130) | R10 from 10° to 19° | Natural Grip |
| Areas with bare feet | DIN 51097 | C over 24° | Natural Grip |
| Slip resistance Coefficient of friction | BS 7976-2 | Test results upon request | |

PRODUCT QUALITY & DURABILITY

| Technical Characteristics | Industry Standards | Requirement | Actual Value |
|---|---|-----------------------------------|--|
| Water absorption | BS EN ISO 10545-3 | ≤ 0.5% | Conforms |
| Modulus of rupture (bending strength) | BS EN ISO 10545-4 | ≥ 35 N/mm ² | Conforms |
| Breaking strength | BS EN ISO 10545-4 | ≥ 1300 N | Conforms |
| Resistance to deep abrasion (unglazed tiles) | BS EN ISO 10545-6 | ≤ 175 mm ³ | Conforms |
| Resistance to surface abrasion | BS EN ISO 10545-7 | PEI *see classifications below | Class 4 - DAFN 01,02,03,04&06 Class 3 - DAFN 05 |
| Thermal shock resistance | BS EN ISO 10545-9 | No visible defects | Resistant |
| Crazing resistance | BS EN ISO 10545-11 | No visible signs | Resistant |
| Frost resistance | BS EN ISO 10545-12 | No surface alteration | Resistant |
| Chemical resistance: Low concentrations of acids & alkalis | BS EN ISO 10545-13 | No visible defects | ULA |
| High concentrations of acids & alkalis | BS EN ISO 10545-13 | No visible defects | UHA |
| Domestic chemicals & additives for swimming pools | BS EN ISO 10545-13 | UB min. | UA |
| Stain resistance | BS EN ISO 10545-14 | Declared value | Class 5 |
| Reaction to fire | Based on the decision 96/603/EC and its changes | A1 _{FL} /A1 | A1 _{FL} /A1 |
| Recycled content | | | 16% |

***PEI classifications**
 PEI 2 - Light traffic
 PEI 3 - Light to moderate traffic
 PEI 4 - Moderate to heavy traffic
 PEI 5 - Heavy to extra heavy traffic



All test results are based upon current test data provided by the manufacturer and are provided in good faith. Domus Group cannot be held responsible for any variation in the test data due to changes in manufacture or material characteristics. Errors & omissions excepted. Please refer to Domus Group Terms & Conditions of Sale. December 2020

DOMUS

service@domusgroup.com | t: 020 8481 9500 | domusgroup.com