

# I Colori Anti-Slip

*Porcelain Minimal*



Floor: DCORA 01 Anti-Slip

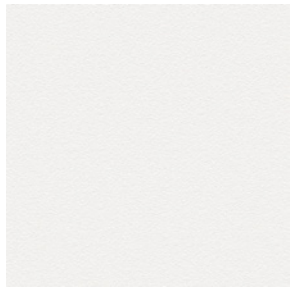
**3 Colours / 1 Finish / 2 Sizes / 2 Mosaics**

I Colori Anti-Slip is a range of slip-resistant porcelain tiles suitable for indoor and outdoor use on floors. This minimalistic range is available in modular sizes and can be combined with I Colori Lucido, I Colori Full Body and I Colori Matt.

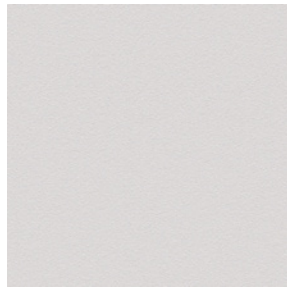


Floor: DCORA 02 Anti-Slip

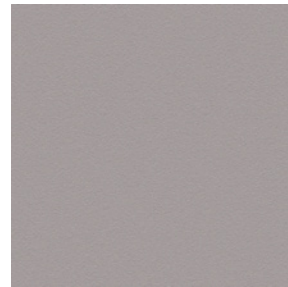
# Sizes



DCORA 01

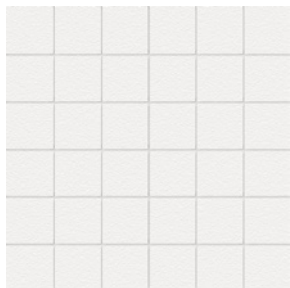


DCORA 02

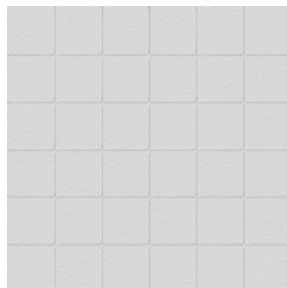


DCORA 03

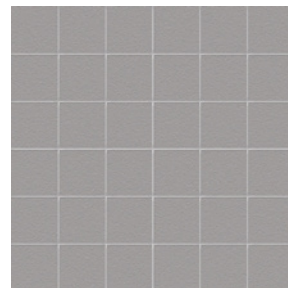
## Mosaic 50 x 50mm



DCORA 01 Mosaic

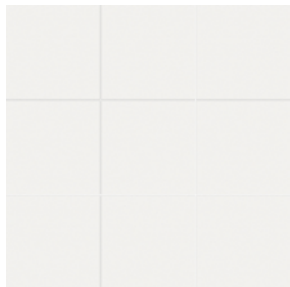


DCORA 02 Mosaic

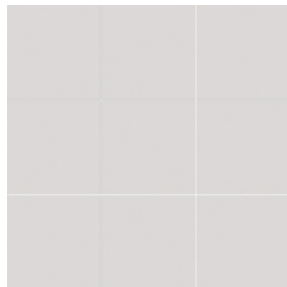


DCORA 03 Mosaic

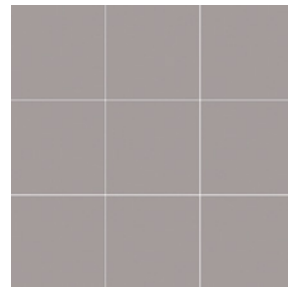
## Mosaic 100 x 100mm



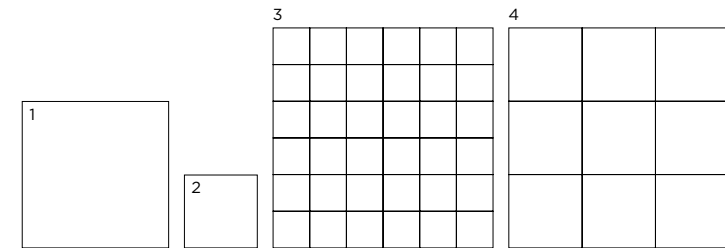
DCORA 01 Mosaic



DCORA 02 Mosaic



DCORA 03 Mosaic



	Size (mm)	Thickness	Finish	Colour Availability
1	200 x 200 (N)	6.5	Anti-Slip	All colours
2	100 x 100 (N)	6.5	Anti-Slip	All colours
3	Mosaic 50 x 50 (N) on 300 x 300 sheet	5.5	Anti-Slip	All colours
4	Mosaic 100 x 100 (N) on 300 x 300 sheet	6.5	Anti-Slip	All colours

(N) Nominal size - pressed edge. Swatch colours may vary from original. Samples should be requested. Recommended for use on floors only.

# I Colori Anti-Slip

## Technical Data

**Product Type: Glazed Ceramic (BS EN 14411 - Group Blb)**

**Use: Floors & Walls**

**Product Code: DCORA**

### DIMENSION & SURFACE QUALITY

Technical Characteristics	Industry Standards	Requirement	Actual Value
Length & width	BS EN ISO 10545-2	± 0.60% (max. ± 2.0mm)	Conforms
Thickness	BS EN ISO 10545-2	± 5% (max. ± 0.5mm)	Conforms
Edge straightness	BS EN ISO 10545-2	± 0.50% (max. ± 1.5mm)	Conforms
Orthogonality (squareness)	BS EN ISO 10545-2	± 0.50% (max. ± 2.0mm)	Conforms
Planarity (flatness)	BS EN ISO 10545-2	± 0.50% (max. ± 2.0mm)	Conforms

### SLIP RESISTANCE

Technical Characteristics	Industry Standards	Requirement	Finish
Areas with footwear	BS EN ISO 10545-17 (DIN 51130)	R10 from 10° to 19°	Anti-Slip
Areas with bare feet	DIN 51097	B over 18° to 24°	Anti-Slip
Slip resistance Coefficient of friction	BS 7976-2 BS EN 16165	Test results upon request	

### PRODUCT QUALITY & DURABILITY

Technical Characteristics	Industry Standards	Requirement	Actual Value
Water absorption	BS EN ISO 10545-3	0.5% < Eb ≤ 3%	Conforms
Modulus of rupture (bending strength)	BS EN ISO 10545-4	≥ 30 N/mm <sup>2</sup>	Conforms
Resistance to surface abrasion (glazed tiles)	BS EN ISO 10545-7	PEI *see classifications below	Class 3 - DCORA 03 Class 4 - DCORA 01 & 02
Linear thermal expansion coefficient	BS EN ISO 10545-8	Declared value	5x5x10 <sup>-6</sup> K <sup>-1</sup> (Typical value)
Thermal shock resistance	BS EN ISO 10545-9	No visible defects	Resistant
Crazing resistance	BS EN ISO 10545-11	No visible signs	Resistant
Frost resistance	BS EN ISO 10545-12	No surface alteration	Resistant
Chemical resistance: Low concentrations of acids & alkalis	BS EN ISO 10545-13	No visible defects	GLA
High concentrations of acids & alkalis	BS EN ISO 10545-13	No visible defects	GHA
Domestic chemicals & additives for swimming pools	BS EN ISO 10545-13	UB/GB min.	GA
Stain resistance	BS EN ISO 10545-14	Min. Class 3 - glazed Declared value - unglazed	Class 3
Reaction to fire	Based on the decision 96/603/EC and its changes	A1 <sub>FL</sub> /A1	A1 <sub>FL</sub> /A1

**\*PEI classifications**  
 PEI 1 - Very light traffic  
 PEI 2 - Light traffic  
 PEI 3 - Light to moderate traffic  
 PEI 4 - Moderate to heavy traffic  
 PEI 5 - Heavy to extra heavy traffic



All test results are based upon current test data provided by the manufacturer and are provided in good faith. Domus Group cannot be held responsible for any variation in the test data due to changes in manufacture or material characteristics. Errors & omissions excepted. Please refer to Domus Group Terms & Conditions of Sale. December 2022

**DOMUS**

service@domusgroup.com | t: 020 8481 9500 | domusgroup.com