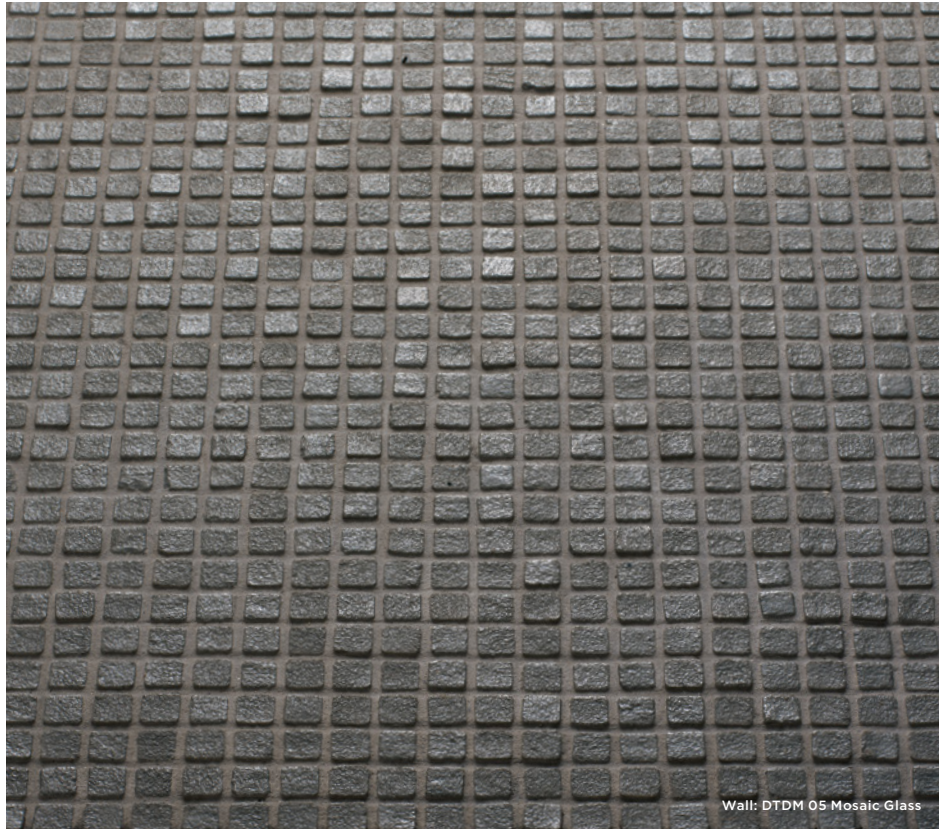


Dechirer Glass

Glass



5 Colours / 1 Finish / 1 Mosaic

Designed by Patricia Urquiola, Dechirer Glass is a glass mosaic range that mimics the colours, finish and joints of concrete. The colour palette is composed of neutral tones that allows the creation of changeable spaces, harmonic and enchanting.

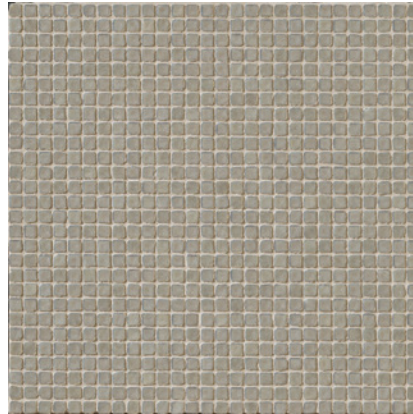
Design Patricia Urquiola

Mutina

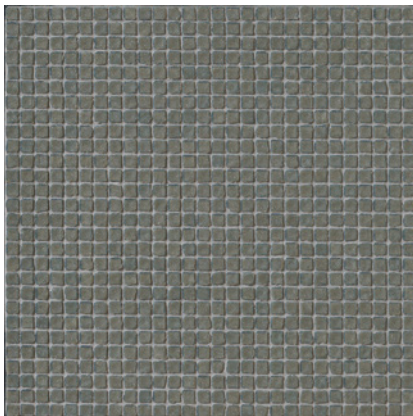




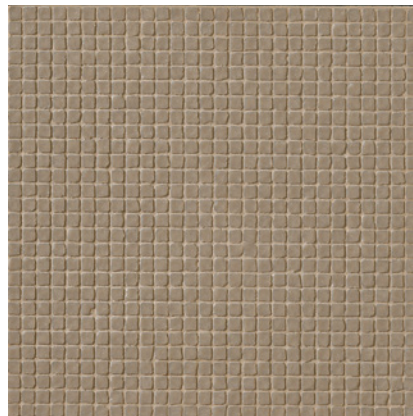
DTDM 01 Mosaic



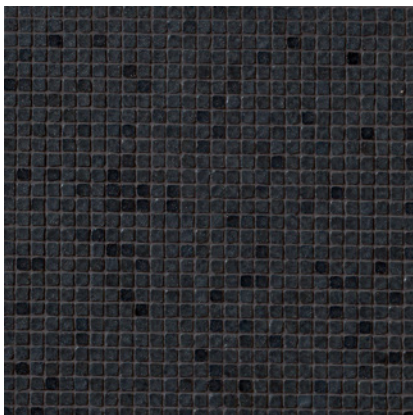
DTDM 02 Mosaic



DTDM 03 Mosaic

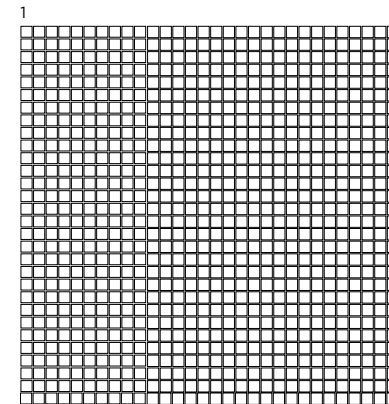


DTDM 04 Mosaic



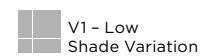
DTDM 05 Mosaic

Sizes



	Size (mm)	Thickness	Finish	Colour Availability
1	Mosaic 9 x 9 on 300 x 300 sheet	4.5	Glass	All colours

Swatch colours may vary from original. Samples should be requested.



Dechirer Glass

Technical Data

Product Type: Glass Mosaic

Use: Walls

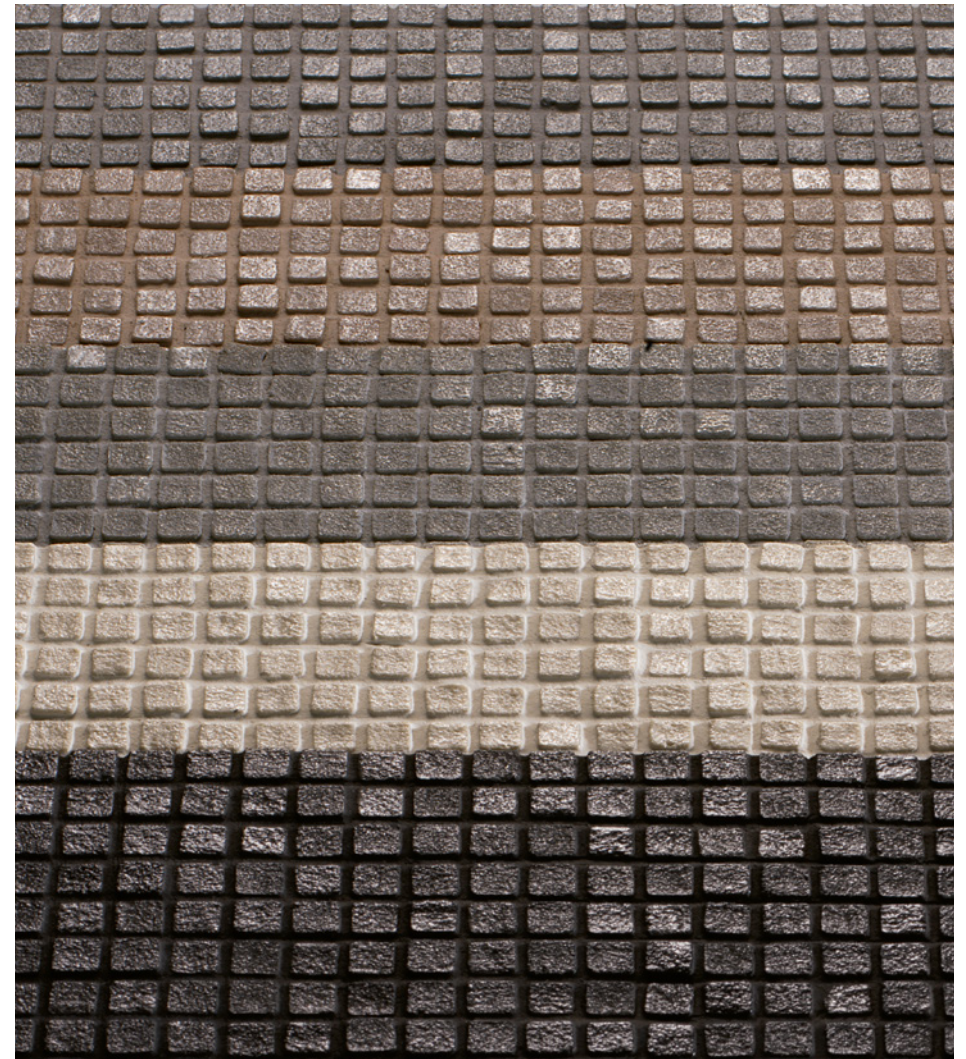
Product Code: DTDM

PRODUCT QUALITY & DURABILITY

Technical Characteristics	Industry Standards	Requirement	Actual Value
Water absorption	BS EN ISO 10545-3	—	0%
Thermal shock resistance	BS EN ISO 10545-9	—	Resistant
Crazing resistance	BS EN ISO 10545-11	—	Resistant
Chemical resistance: Low concentrations of acids & alkalis	BS EN ISO 10545-13	—	LA
High concentrations of acids & alkalis	BS EN ISO 10545-13	—	HA
Domestic chemicals & additives for swimming pools	BS EN ISO 10545-13	—	A
Stain resistance	BS EN ISO 10545-14	—	Class 5
Reaction to fire	Based on the decision 96/603/EC and its changes		A1 _{FL} /A1
Recycled content			40%



All test results are based upon current test data provided by the manufacturer and are provided in good faith. Domus Group cannot be held responsible for any variation in the test data due to changes in manufacture or material characteristics. Errors & omissions excepted. Please refer to Domus Group Terms & Conditions of Sale. January 2023



DOMUS

service@domusgroup.com | t: 020 8481 9500 | domusgroup.com