

# Flow 2.0

*Porcelain Minimal*



Floor: DRFW 12 Polished

**8 Colours / 4 Finishes / 10 Sizes / 12 Mosaics**

Flow 2.0 is a double-loaded porcelain wall and floor tile range created with delicate stone-like characteristics. This range consists of balanced and coordinating colours and sizes to suit the specifications of every scale.



Wall: DRFW 06 Matt & Polished  
Floor: DRFW 06 Matt



DRFW 01



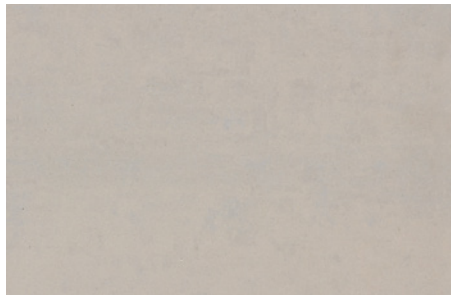
DRFW 11



DRFW 03



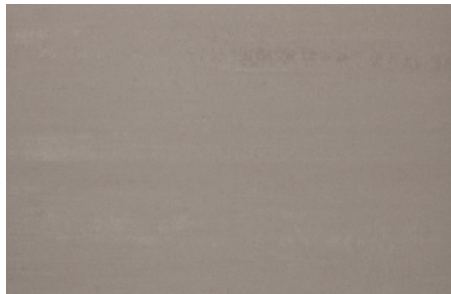
DRFW 12



DRFW 04



DRFW 06

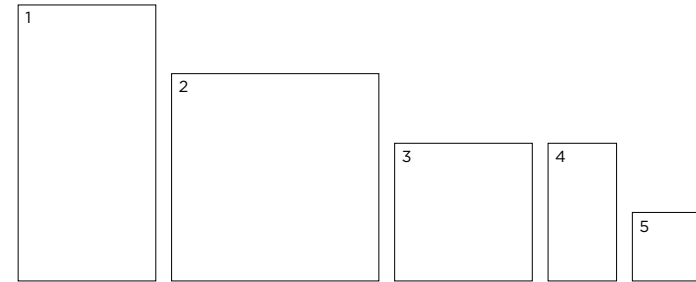


DRFW 05



DRFW 08

# Sizes



	Size (mm)	Thickness	Finish	Colour Availability
1	1186 x 592 (R)	9.8	Soft	All colours
		9.8	Matt	All colours
		9.3	Polished	All colours
2	889 x 889 (R)	10.5	Soft	All colours
		10.5	Matt	All colours
		9.8	Polished	All colours
3	592 x 592 (R)	8.5	Soft	All colours
		8.5	Matt	All colours
		8	Polished	All colours
		8.5	Bush Hammered	All colours
4	592 x 295 (R)	8.5	Soft	All colours
		8.5	Matt	All colours
		8	Polished	All colours
		8.5	Bush Hammered	All colours
5	295 x 295 (R)	8.5	Soft	All colours
		8.5	Matt	All colours
		8	Polished	All colours

(R) Rectified size - square edge with bevel. Swatch colours may vary from original. Samples should be requested. Chevron and bar sizes shown on next page.

V2 - Moderate  
Shade Variation

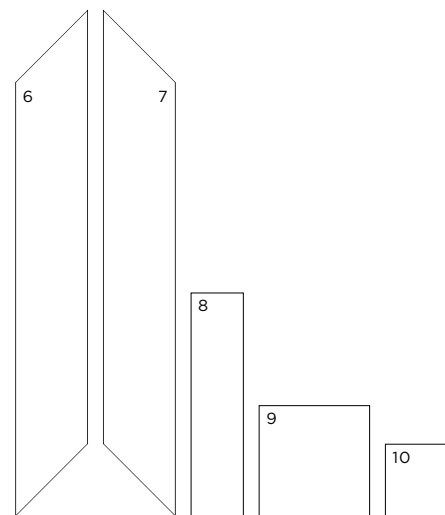
**DOMUS**

service@domusgroup.com | t: 020 8481 9500 | domusgroup.com



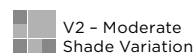
Wall: DRFW 05 Matt, Polished & Bush Hammered  
 Floor: DRFW 05 Matt

## Chevrons & Bars



	Size (mm)	Thickness	Finish	Colour Availability
6	Chevron Right 497 x 97 (R)	8.5	Matt	All colours
7	Chevron Left 497 x 97 (R)	8.5	Matt	All colours
8	Bar 295 x 70 (R)	8.5 8	Matt Polished	All colours All colours
9	Bar 147 x 147 (R)	8.5	Matt	All colours
10	Bar 96 x 96 (R)	8.5	Matt	All colours

(R) Rectified size - square edge with bevel. Chevron Left and Chevron right pieces measures to 600 x 100mm diagonally across and have an angle of 45°. Swatch colours may vary from original. Samples should be requested. Incised mosaics shown on next page.



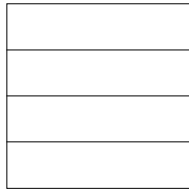
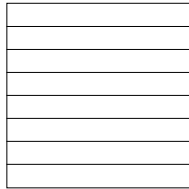
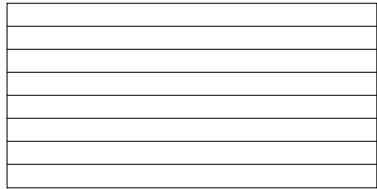
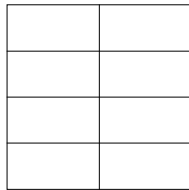
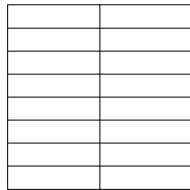
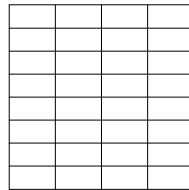
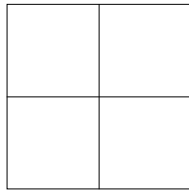
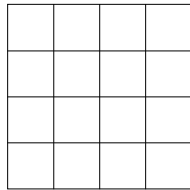
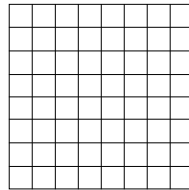
V2 - Moderate  
 Shade Variation

**DOMUS**

service@domusgroup.com | t: 020 8481 9500 | domusgroup.com

**Linea 2**

592 x 296mm

**296 x 296mm****Linea 4****Linea 8****Cross 8****Cross 16****Cross 32****Square 4****Square 16****Square 64**

# Incised Mosaics

---

Size (mm)	Thickness	Finish
<b>Linea 2</b>		
592 x 295 (R)	8.5	Matt
	8.5	Soft
	8	Polished
295 x 295 (R)	8.5	Matt
	8.5	Soft
	8	Polished
<b>Linea 4</b>		
592 x 295 (R)	8.5	Matt
	8.5	Soft
	8	Polished
295 x 295 (R)	8.5	Matt
	8.5	Soft
	8	Polished
<b>Linea 8</b>		
592 x 295 (R)	8.5	Matt
	8.5	Soft
	8	Polished
295 x 295 (R)	8.5	Matt
	8.5	Soft
	8	Polished

Size (mm)	Thickness	Finish
<b>Cross 8</b>		
295 x 295 (R)	8.5	Matt
	8.5	Soft
	8	Polished
<b>Cross 16</b>		
295 x 295 (R)	8.5	Matt
	8.5	Soft
	8	Polished
<b>Cross 32</b>		
295 x 295 (R)	8.5	Matt
	8.5	Soft
	8	Polished
<b>Square 4</b>		
295 x 295 (R)	8.5	Matt
	8.5	Soft
	8	Polished
<b>Square 16</b>		
295 x 295 (R)	8.5	Matt
	8.5	Soft
	8	Polished
<b>Square 64</b>		
295 x 295 (R)	8.5	Matt
	8.5	Soft
	8	Polished

All incised mosaics are available in all colours.  
(R) Rectified size - square edge with bevel.

Swatch colours may vary from original.  
Samples should be requested.



**DOMUS**

# Flow 2.0

## Technical Data

**Product Type:** Unglazed Porcelain (BS EN 14411 – Group Bla)

**Use:** Floors & Walls

**Product Code:** DRFW

### DIMENSION & SURFACE QUALITY

Technical Characteristics	Industry Standards	Requirement	Actual Value
Length & width	BS EN ISO 10545-2	± 0.60% (max. ± 2.0mm)	± 0.2% ± 0.1% *
Thickness	BS EN ISO 10545-2	± 5% (max. ± 0.5mm)	± 5%
Edge straightness	BS EN ISO 10545-2	± 0.50% (max. ± 1.5mm)	± 0.3% ± 0.2% *
Orthogonality (squareness)	BS EN ISO 10545-2	± 0.50% (max. ± 2.0mm)	± 0.3% ± 0.2% *
Planarity (flatness)	BS EN ISO 10545-2	± 0.50% (max. ± 2.0mm)	± 0.3% ± 0.2% *
Appearance	BS EN ISO 10545-2	> 95%	Conforms

\* Polished Finish only

### SLIP RESISTANCE

Technical Characteristics	Industry Standards	Requirement	Finish
Areas with footwear	BS EN ISO 10545-17 (DIN 51130)	R10 from 10° to 19° R11 from 19° to 27°	Matt Bush Hammered
Areas with bare feet	DIN 51097	A over 12° to 18° B over 18° to 24°	Matt Bush Hammered
Slip resistance Coefficient of friction	BS 7976-2	Test results upon request	

### PRODUCT QUALITY & DURABILITY

Technical Characteristics	Industry Standards	Requirement	Actual Value
Water absorption	BS EN ISO 10545-3	≤ 0.5%	< 0.05% (Typical value)
Modulus of rupture (bending strength)	BS EN ISO 10545-4	≥ 35 N/mm <sup>2</sup>	> 45 N/mm <sup>2</sup> (Typical value)
Breaking strength	BS EN ISO 10545-4	≥ 1300 N	> 2000 N (Typical value)
Resistance to deep abrasion	BS EN ISO 10545-6	≤ 175 mm <sup>3</sup>	<160 mm <sup>3</sup> (Typical value)
Linear thermal expansion coefficient	BS EN ISO 10545-8	Declared value	≤ 8 x 10 <sup>-6</sup> / °C (Typical value)
Thermal shock resistance	BS EN ISO 10545-9	No visible defects	Resistant
Frost resistance	BS EN ISO 10545-12	No surface alteration	Resistant
Chemical resistance: Low concentrations of acids & alkalis	BS EN ISO 10545-13	No visible defects	ULA
Domestic chemicals & additives for swimming pools	BS EN ISO 10545-13	UB min.	UA
Stain resistance	BS EN ISO 10545-14	Declared value	Class 4 – Matt, Soft & Bush Hammered Class 3 – Polished
Reaction to fire	Based on the decision 96/603/EC and its changes	A1 <sub>FL</sub>	A1 <sub>FL</sub>
Recycled content			0%



All test results are based upon current test data provided by the manufacturer and are provided in good faith. Domus Group cannot be held responsible for any variation in the test data due to changes in manufacture or material characteristics. Errors & omissions excepted. Please refer to Domus Group Terms & Conditions of Sale. November 2021

**DOMUS**

service@domusgroup.com | t: 020 8481 9500 | domusgroup.com