

Storm Wall

Ceramic Design



5 Colours / 1 Finish / 2 Sizes / 2 Décors

Storm Wall is a stone-effect ceramic tile range designed for use on interior walls only to convey smoothness and warmth. Its structure's smooth texture is combined with a balanced design in the form of two décor options. Refer to Storm for complementing porcelain wall and floor tiles in the same colour palette.





Wall: DATSW 04 Matt



Wall: DATSW 01 & DATSW 04 Block Décor



DATSW 01



DATSW 02



DATSW 03

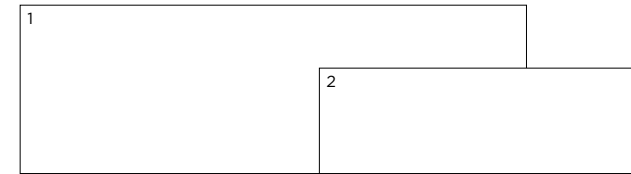


DATSW 04



DATSW 05

Sizes



	Size (mm)	Thickness	Finish	Colour Availability
1	1200 x 400 (R)	10.8	Matt	All colours
2	753 x 251 (N)	8.7	Matt	All colours

(R) Rectified size - square edge with bevel. (N) Nominal size - pressed edge. Suitable for wall use only. Décors shown on next page. Swatch colours may vary from original. Samples should be requested.

Décors



DATSW 01 Blind Décor



DATSW 01 Block Décor



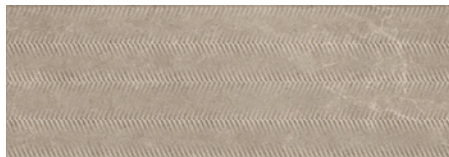
DATSW 02 Blind Décor



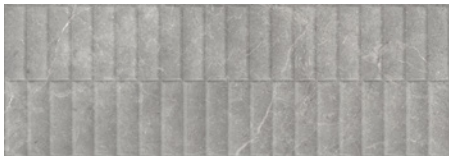
DATSW 02 Block Décor



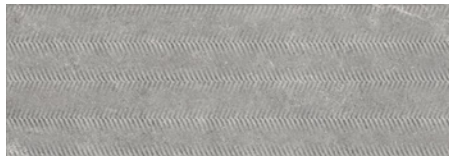
DATSW 03 Blind Décor



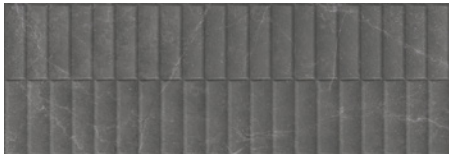
DATSW 03 Block Décor



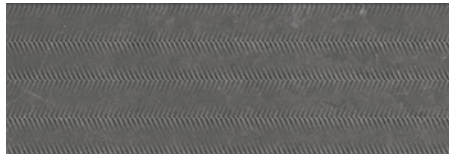
DATSW 04 Blind Décor



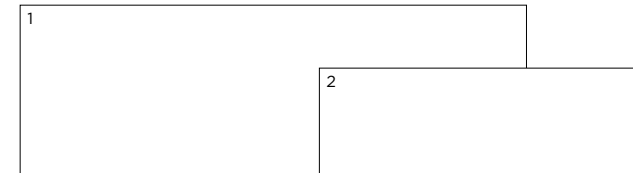
DATSW 04 Block Décor



DATSW 05 Blind Décor



DATSW 05 Block Décor



	Size (mm)	Thickness	Finish	Colour Availability
1	Blind Décor 1200 x 400 (R)	10.8	Matt	All colours
2	Block Décor 753 x 251 (N)	8.7	Matt	All colours

(R) Rectified size - square edge with bevel. (N) Nominal size - pressed edge. Suitable for wall use only. Swatch colours may vary from original. Samples should be requested.

Storm Wall

Technical Data

Product Type: Glazed Ceramic (BS EN 14411 – Group BIII)

Use: Walls (Internal only)

Product Code: DATSW

DIMENSION & SURFACE QUALITY

Technical Characteristics	Industry Standards	Requirement	Actual Value
Length & width	BS EN ISO 10545-2	± 0.50% (max. ± 2.0mm)	Conforms
Thickness	BS EN ISO 10545-2	± 10% (max. ± 0.5mm)	Conforms
Edge straightness	BS EN ISO 10545-2	± 0.30% (max. ± 1.5mm)	Conforms
Orthogonality (squareness)	BS EN ISO 10545-2	± 0.50% (max. ± 2.0mm)	Conforms
Planarity (flatness): Centre curvature	BS EN ISO 10545-2	+ 0.5% (max. + 2.0mm - 0.3% (max. - 1.5mm)	Conforms
Edge curvature	BS EN ISO 10545-2	+ 0.5% (max. + 2.0mm) - 0.3% (max. - 1.5mm)	Conforms
Warpage	BS EN ISO 10545-2	± 0.5% (max. ± 2.0mm)	Conforms
Appearance	BS EN ISO 10545-2	> 95%	Conforms

PRODUCT QUALITY & DURABILITY

Technical Characteristics	Industry Standards	Requirement	Actual Value
Water absorption	BS EN ISO 10545-3	> 10%	> 10% (typical value)
Modulus of rupture (bending strength)	BS EN ISO 10545-4	≥ 12 N/mm ²	> 15 N/mm ² (typical value)
Breaking strength	BS EN ISO 10545-4	≥ 7.5mm thick ≥ 600 N	> 600 N (typical value)
Linear thermal expansion coefficient	BS EN ISO 10545-8	Declared value	20 ⁰ - 100 ⁰ C (typical value)
Thermal shock resistance	BS EN ISO 10545-9	No visible defects	Resistant
Crazing resistance	BS EN ISO 10545-11	No visible defects	Resistant
Chemical resistance: Low concentrations of acids & alkalis	BS EN ISO 10545-13	No visible defects	GLB
High concentrations of acids & alkalis	BS EN ISO 10545-13	No visible defects	GHB
Domestic chemicals & additives for swimming pools	BS EN ISO 10545-13	GB min.	GB
Stain resistance	BS EN ISO 10545-14	Min. Class 3	Resistant
Reaction to fire	Based on the decision 96/603/EC and its changes	A1	A1
Recycled content			29%



All test results are based upon current test data provided by the manufacturer and are provided in good faith. Domus Group cannot be held responsible for any variation in the test data due to changes in manufacture or material characteristics. Errors & omissions excepted. Please refer to Domus Group Terms & Conditions of Sale. January 2023

DOMUS

service@domusgroup.com | t: 020 8481 9500 | domusgroup.com