

Drammen

Porcelain Stone



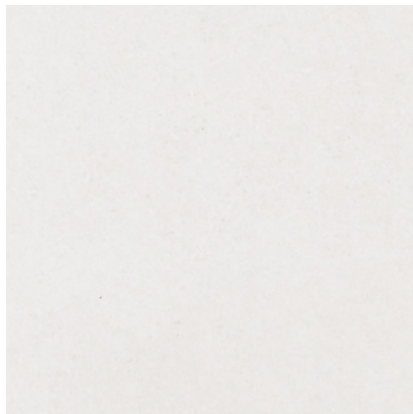
Floor: DADR 05 Natural Grip

5 Colours / 1 Finish / 4 Sizes

Crafted to bring timeless elegance to your space, Drammen boasts a fine-grained, classic limestone effect. Their practical and high-performing nature, with sizes reaching up to a spacious 1200 x 600mm, makes them a versatile choice for residential and commercial applications.



Floor: DADR 02 Natural Grip



DADR 01



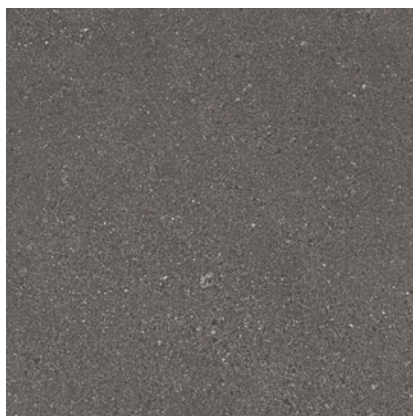
DADR 02



DADR 04

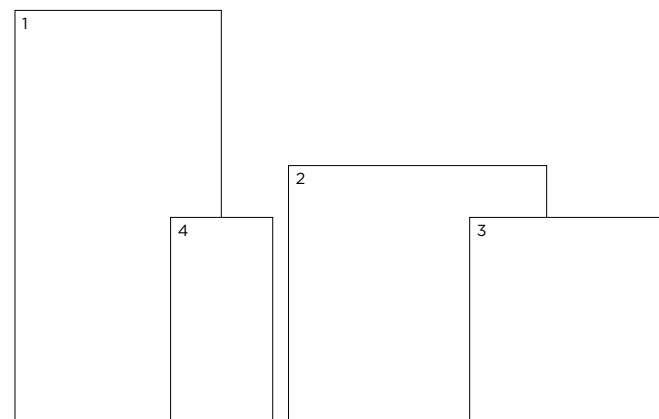


DADR 03



DADR 05

Sizes



	Size (mm)	Thickness	Finish	Colour Availability
1	1200 x 600 (R)	9	Natural Grip	All colours
2	750 x 750 (R)	9	Natural Grip	All colours
3	600 x 600 (R)	9	Natural Grip	All colours
4	600 x 298 (R)	9	Natural Grip	All colours

(R) Rectified size - square edge with bevel.
 Swatch colours may vary from original. Samples should be requested.

Drammen

Technical Data

Product Type: Glazed Porcelain (BS EN 14411 – Group BIa)

Use: Floors & Walls

Product Code: DADR

DIMENSION & SURFACE QUALITY

Technical Characteristics	Industry Standards	Requirement	Actual Value
Length & width	BS EN ISO 10545-2	± 0.60% (max. ± 2.0mm)	Conforms
Thickness	BS EN ISO 10545-2	± 5% (max. ± 0.5mm)	Conforms
Edge straightness	BS EN ISO 10545-2	± 0.50% (max. ± 1.5mm)	Conforms
Orthogonality (squareness)	BS EN ISO 10545-2	± 0.50% (max. ± 2.0mm)	Conforms
Planarity (flatness)	BS EN ISO 10545-2	± 0.50% (max. ± 2.0mm)	Conforms
Appearance	BS EN ISO 10545-2	> 95%	Conforms

SLIP RESISTANCE

Technical Characteristics	Industry Standards	Requirement	Finish
Areas with footwear	BS EN ISO 10545-17 (DIN 51130)	R10 from 10° to 19°	Natural Grip
Areas with bare feet	DIN 51097	C over 24°	Natural Grip
Slip resistance Coefficient of friction	BS 7976-2	Test results upon request	

PRODUCT QUALITY & DURABILITY

Technical Characteristics	Industry Standards	Requirement	Actual Value
Water absorption	BS EN ISO 10545-3	≤ 0.5%	Conforms
Modulus of rupture (bending strength)	BS EN ISO 10545-4	≥ 35 N/mm ²	Conforms
Breaking strength	BS EN ISO 10545-4	≥ 1300 N	Conforms
Resistance to surface abrasion (glazed tiles)	BS EN ISO 10545-7	PEI *see classifications below	Class 4 - DADR 01 & 02 Class 3 - DADR 03, 04 & 05
Thermal shock resistance	BS EN ISO 10545-9	No visible defects	Resistant
Crazing resistance	BS EN ISO 10545-11	No visible signs	Resistant
Frost resistance	BS EN ISO 10545-12	No surface alteration	Resistant
Chemical resistance: Low concentrations of acids & alkalis	BS EN ISO 10545-13	No visible defects	GLB
High concentrations of acids & alkalis	BS EN ISO 10545-13	No visible defects	GHB
Domestic chemicals & additives for swimming pools	BS EN ISO 10545-13	GB min.	GB
Stain resistance	BS EN ISO 10545-14	Min. Class 3	Conforms
Reaction to fire	Based on the decision 96/603/EC and its changes	A1 _{FL} /A1	A1 _{FL} /A1
Recycled content			16%

***PEI classifications**
 PEI 2 - Light traffic
 PEI 3 - Light to moderate traffic
 PEI 4 - Moderate to heavy traffic
 PEI 5 - Heavy to extra heavy traffic



All test results are based upon current test data provided by the manufacturer and are provided in good faith. Domus Group cannot be held responsible for any variation in the test data due to changes in manufacture or material characteristics. Errors & omissions excepted. Please refer to Domus Group Terms & Conditions of Sale. November 2019