

Stavanger

Porcelain Stone



Floor: DAKN 05 Bush Hammered

6 Colours / 3 Finishes / 5 Sizes

Having a classic fine-grained limestone effect, Stavanger is presented in a harmonic palette of soft organic colours with subtle mineral inclusions. A coordinating ceramic wall tile version with complementing décors is available—refer to Stavanger Wall.



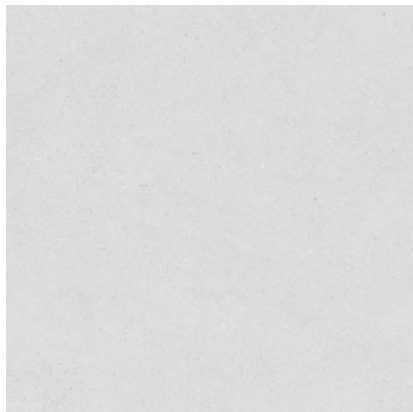
Wall: DAKN 05 Natural Grip
Counter: Narvik DAFN 02 Natural Grip
Left Wall & Floor: DAKN 02 Natural Grip



Floor: DAKN 05 Bush Hammered



Floor: DAKN 03 Natural Grip



DAKN 06



DAKN 03



DAKN 01



DAKN 04

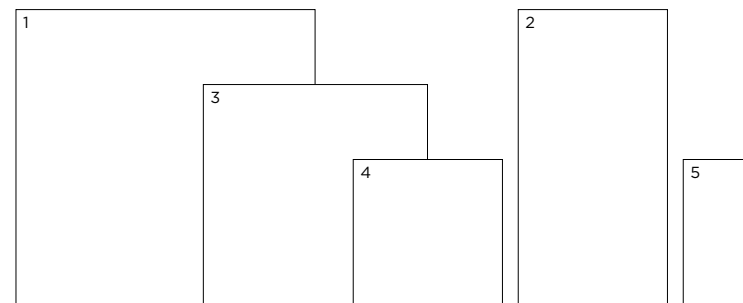


DAKN 02



DAKN 05

Sizes



	Size (mm)	Thickness	Finish	Colour Availability
1	1200 x 1200 (R)	9	Natural Grip	All colours
2	1200 x 600 (R)	9	Natural Grip Bush Hammered Lappato	All colours All colours All colours
3	900 x 900 (R)	9	Natural Grip Bush Hammered Lappato	All colours All colours All colours
4	600 x 600 (R)	9	Natural Grip Bush Hammered Lappato	All colours All colours All colours
5	600 x 298 (R)	9	Natural Grip Bush Hammered Lappato	All colours All colours All colours

(R) Rectified size - square edge with bevel.
Swatch colours may vary from original. Samples should be requested.

V2 - Moderate
Shade Variation

DOMUS

service@domusgroup.com | t: 020 8481 9500 | domusgroup.com

Stavanger

Technical Data

Product Type: Unglazed Porcelain (BS EN 14411 – Group Bla)

Use: Floors & Walls

Product Code: DAKN

DIMENSION & SURFACE QUALITY

Technical Characteristics	Industry Standards	Requirement	Actual Value
Length & width	BS EN ISO 10545-2	± 0.60% (max. ± 2.0mm)	Conforms
Thickness	BS EN ISO 10545-2	± 5% (max. ± 0.5mm)	Conforms
Edge straightness	BS EN ISO 10545-2	± 0.50% (max. ± 1.5mm)	Conforms
Orthogonality (squareness)	BS EN ISO 10545-2	± 0.50% (max. ± 2.0mm)	Conforms
Planarity (flatness)	BS EN ISO 10545-2	± 0.50% (max. ± 2.0mm)	Conforms
Appearance	BS EN ISO 10545-2	> 95%	Conforms

SLIP RESISTANCE

Technical Characteristics	Industry Standards	Requirement	Finish
Areas with footwear	BS EN ISO 10545-17 (DIN 51130)	R10 from 10° to 19° R11 from 19° to 27°	Natural Grip Bush Hammered
Areas with bare feet	DIN 51097	C over 24°	Natural Grip & Bush Hammered
Slip resistance Coefficient of friction	BS 7976-2	Test results upon request	

PRODUCT QUALITY & DURABILITY

Technical Characteristics	Industry Standards	Requirement	Actual Value
Water absorption	BS EN ISO 10545-3	≤ 0.5%	Conforms
Modulus of rupture (bending strength)	BS EN ISO 10545-4	≥ 35 N/mm ²	Conforms
Breaking strength	BS EN ISO 10545-4	≥ 1300 N	Conforms
Resistance to deep abrasion (unglazed tiles)	BS EN ISO 10545-6	≤ 175 mm ³	Conforms
Resistance to surface abrasion	BS EN ISO 10545-7	PEI *see classifications below	Natural Grip & Bush Hammered Class 4 - DAKN 01, 02, 03 & 06 Class 3 - DAKN 04 & 05 ----- Lappato Class 4- DAKN 01, 02 & 06 Class 3 - DAKN 03,04 & 05
Thermal shock resistance	BS EN ISO 10545-9	No visible defects	Resistant
Crazing resistance	BS EN ISO 10545-11	No visible signs	Resistant
Frost resistance	BS EN ISO 10545-12	No surface alteration	Resistant
Chemical resistance: Low concentrations of acids & alkalis	BS EN ISO 10545-13	No visible defects	ULA
High concentrations of acids & alkalis	BS EN ISO 10545-13	No visible defects	UHA
Domestic chemicals & additives for swimming pools	BS EN ISO 10545-13	UB min.	UA
Stain resistance	BS EN ISO 10545-14	Declared value	Class 5
Reaction to fire	Based on the decision 96/603/EC and its changes	A1 _{FL} /A1	A1 _{FL} /A1
Recycled content			16%

*PEI classifications
 PEI 2 - Light traffic
 PEI 3 - Light to moderate traffic
 PEI 4 - Moderate to heavy traffic
 PEI 5 - Heavy to extra heavy traffic



All test results are based upon current test data provided by the manufacturer and are provided in good faith. Domus Group cannot be held responsible for any variation in the test data due to changes in manufacture or material characteristics. Errors & omissions excepted. Please refer to Domus Group Terms & Conditions of Sale. December 2020

DOMUS

service@domusgroup.com | t: 020 8481 9500 | domusgroup.com