

Made 2.0

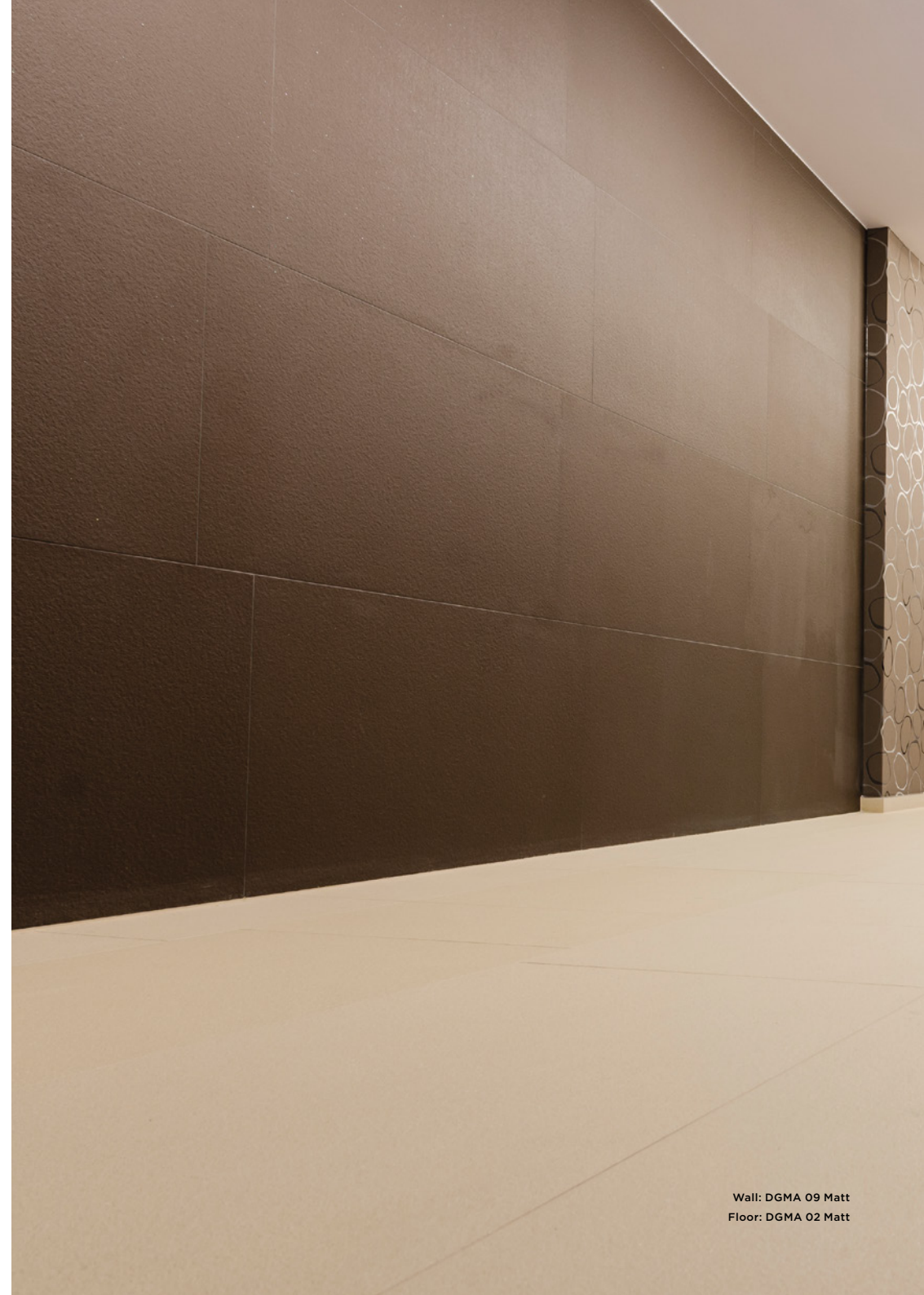
Porcelain Minimal



Floor: DGMA 02 Bush Hammered

11 Colours / **2** Finishes / **5** Sizes

Made 2.0 is a porcelain tile range with large-format sizes produced using the latest production technologies. In this range, stylish complementary organic tones are used to create excellent design variety and presence.



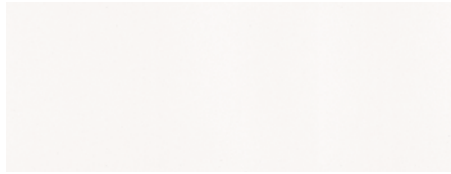
Wall: DGMA 09 Matt
Floor: DGMA 02 Matt



Floor: DGMA 08 Matt



Floor: DGMA 03 Bush Hammered



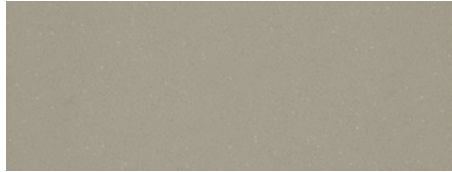
DGMA 01



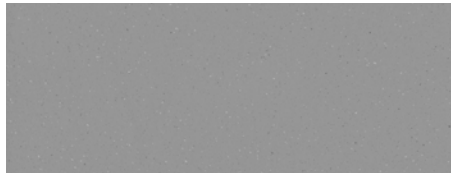
DGMA 02



DGMA 03



DGMA 05



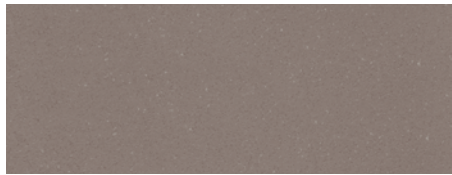
DGMA 11



DGMA 04



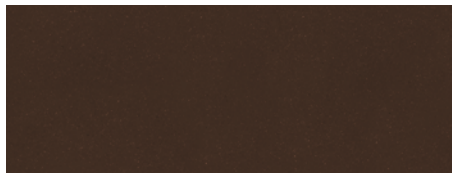
DGMA 06



DGMA 07



DGMA 08

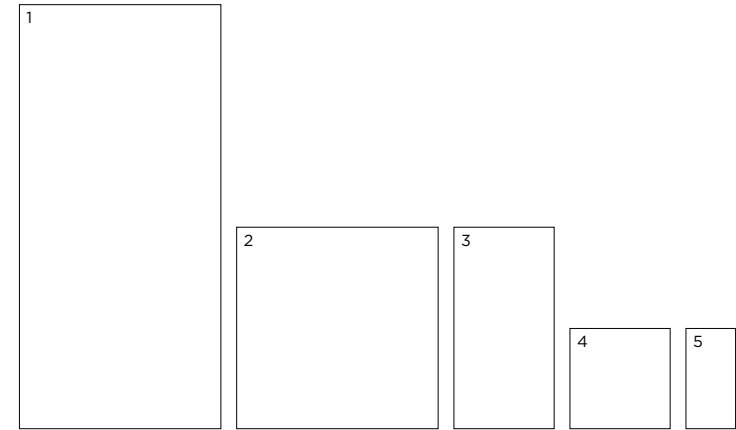


DGMA 09



DGMA 10

Sizes



	Size (mm)	Thickness	Finish	Colour Availability
1	2500 x 1190 (R)	12	Matt	DGMA 01, 05, 10 & 11
2	1190 x 1190 (R)	12	Matt Bush Hammered	All colours All colours
3	1190 x 594 (R)	12	Matt Bush Hammered	All colours All colours
4	594 x 594 (R)	12	Matt Bush Hammered	All colours All colours
5	594 x 296 (R)	12	Matt Bush Hammered	All colours All colours
	Skirting 594 x 71	12	Matt Bush Hammered	All colours All colours
	Gradino Costa Retta 1190 x 330 x 40	30	Matt Bush Hammered	All colours All colours
	Gradino Costa Retta 594 x 330 x 40	30	Matt Bush Hammered	All colours All colours

(R) Rectified size - square edge with bevel. Swatch colours may vary from original. Samples should be requested.

V1 - Low
Shade Variation

DOMUS

service@domusgroup.com | t: 020 8481 9500 | domusgroup.com

Made 2.0

Technical Data

Product Type: Unglazed Porcelain (BS EN 14411 – Group Bla)

Use: Floors & Walls

Product Code: DGMA

DIMENSION & SURFACE QUALITY

Technical Characteristics	Industry Standards	Requirement	Actual Value
Length & width	BS EN ISO 10545-2	± 0.60% (max. ±2.0mm)	± 0.2%
Thickness	BS EN ISO 10545-2	± 5% (max. ±0.5mm)	± 3%
Edge straightness	BS EN ISO 10545-2	± 0.50% (max. ±1.5mm)	± 0.2%
Orthogonality (squareness)	BS EN ISO 10545-2	± 0.50% (max. ±2.0mm)	± 0.2%
Planarity (flatness)	BS EN ISO 10545-2	± 0.50% (max. ±2.0mm)	± 0.2%
Appearance	BS EN ISO 10545-2	> 95%	Conforms

SLIP RESISTANCE

Technical Characteristics	Industry Standards	Requirement	Finish
Areas with footwear	BS EN ISO 10545-17 (DIN 51130)	R10 from 10° to 19° R11 from 19° to 27°	Matt Bush Hammered
Areas with bare feet	DIN 51097	C over 24°	Bush Hammered
Slip resistance Coefficient of friction	BS 7976-2	Test results upon request	

PRODUCT QUALITY & DURABILITY

Technical Characteristics	Industry Standards	Requirement	Actual Value
Water absorption	BS EN ISO 10545-3	≤ 0.5%	≤ 0.1% (typical value)
Modulus of rupture (bending strength)	BS EN ISO 10545-4	≥ 35 N/mm ²	≥ 40 N/mm ² (typical value)
Breaking strength	BS EN ISO 10545-4	≥ 1300 N	≥ 4000 N (typical value)
Resistance to deep abrasion (of unglazed tiles)	BS EN ISO 10545-6	≤ 175mm ³	≤ 145 mm ³ (typical value)
Linear thermal expansion coefficient	BS EN ISO 10545-8	Declared value	≤ 7 × 10 ⁻⁶ / °C ⁻¹ (typical value)
Thermal shock resistance	BS EN ISO 10545-9	No visible defects	Resistant
Frost resistance	BS EN ISO 10545-12	No surface alteration	Resistant
Chemical resistance: Low concentrations of acids & alkalis	BS EN ISO 10545-13	No visible defects	ULA
High concentrations of acids & alkalis	BS EN ISO 10545-13	No visible defects	UHA
Domestic chemicals & additives for swimming pools	BS EN ISO 10545-13	UB min.	UA
Stain resistance	BS EN ISO 10545-14	Declared value	Class 5
Reaction to fire	Based on the decision 96/603/EC and its changes	A1 _{FL} /A1	A1 _{FL} /A1
Recycled content			41%



All test results are based upon current test data provided by the manufacturer and are provided in good faith. Domus Group cannot be held responsible for any variation in the test data due to changes in manufacture or material characteristics. Errors & omissions excepted. Please refer to Domus Group Terms & Conditions of Sale. November 2019